

Colin Lees

Design Portfolio

The University of Calgary
Master of Planning

≡ Contents

Community Intervention – Sensory Seating	1-2
Photography – Architecture and Interiors	3
Web Map – Accessibility of Public Art by CTrain	4
Pottery	5
Photography – Nature	6
Pathway Revitalization	7
Geographic Information Systems (ArcGIS)	8
Geography Course Union	9
The Doorways of Craigentenny	10
Winter Chalet	11
Camera Study in Watercolour	12

Community Intervention – Sensory Seating

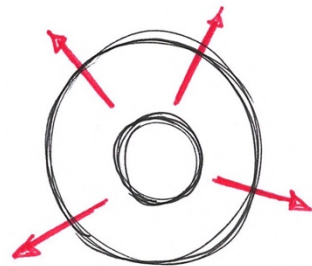
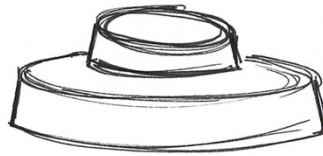
This project was completed for a studio-based design course at the University of Edinburgh which emphasized conceptual development and communication of design processes.

The purpose of this project was to develop a design intervention for a randomly chosen location in Edinburgh. After visiting my area of interest, one of the most apparent issues was a significant lack of outdoor seating. I also determined that this area showed an unusually high concentration of dementia care centers. These centers had a strong interest in creating more dementia-friendly spaces in the area.

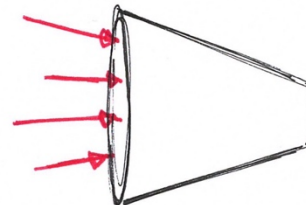
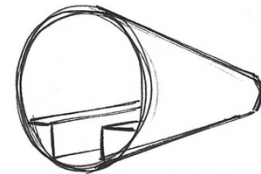
As a result, I decided to develop a series of outdoor benches that would be especially beneficial for the individuals with dementia in the community. After extensive research, I determined that activities for the later stages of dementia should be simplified and have a strong focus on the senses. Knowing this, I designed the benches around the concepts of sight, hearing and touch. (cont.)



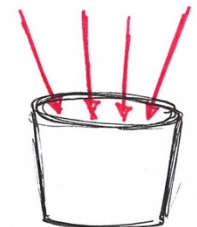
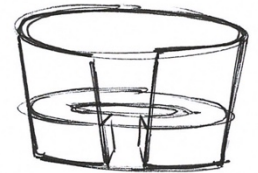
SEE



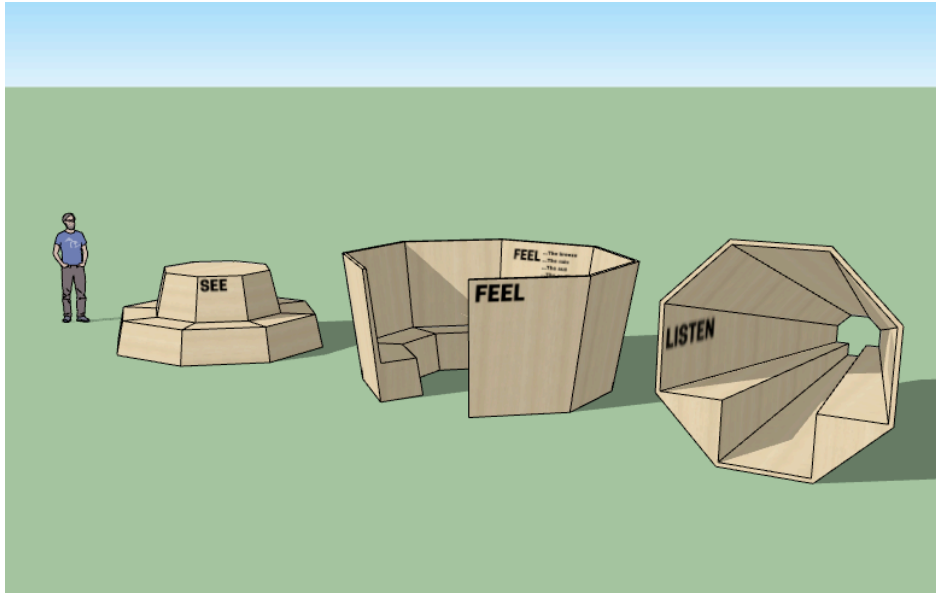
LISTEN



FEEL



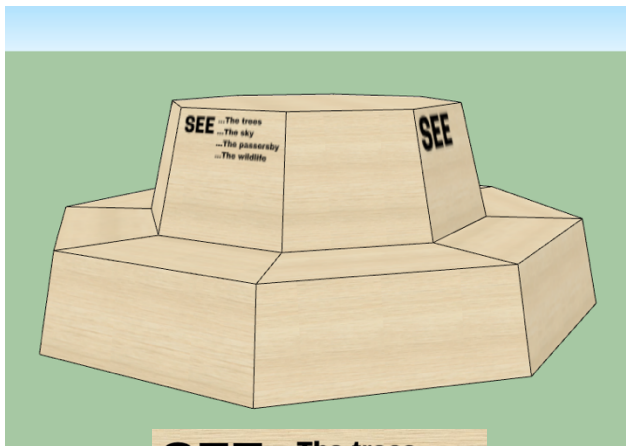
Community Intervention – Sensory Seating



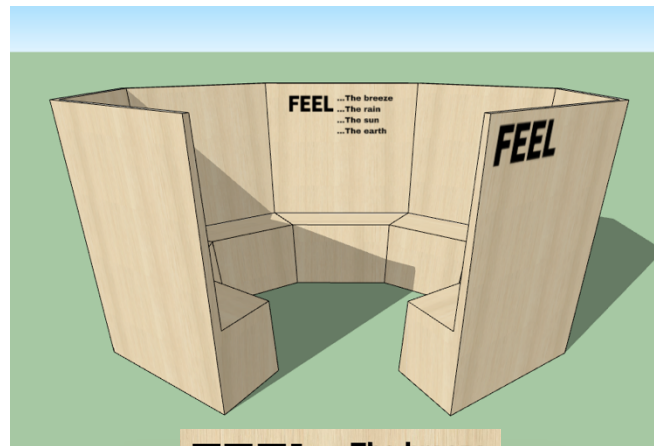
As a final solution, I developed a series of 'Sensory Seating' that both embody and promote the simple activities associated with the senses of sight, touch and hearing. The SEE bench creates a wide-angle view of the user's surroundings emphasizing visibility and sight. The FEEL bench encloses the user in a space in which feelings of touch from above and below are called to attention. The LISTEN bench creates an experience based on the sense of hearing which amplifies incoming sounds into an enclosed seating area. These final concepts were 3D modelled in Google SketchUp.

In order to generate the greatest impact on the community members, the placement of the 'Sensory Seating' structures would be in semi-open areas near the dementia care centers.

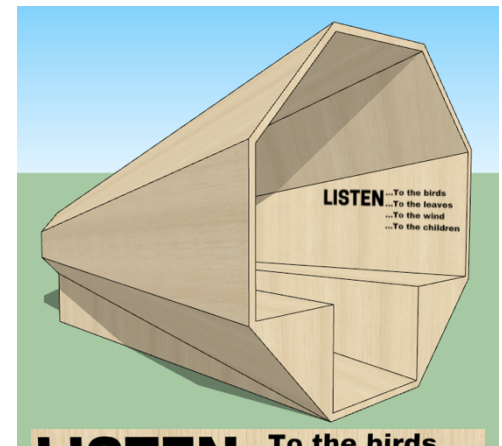
This project helped me to gain a better understanding of user research and human-centered design that is rooted in empathy.



SEE ...The trees
...The sky
...The passersby
...The wildlife

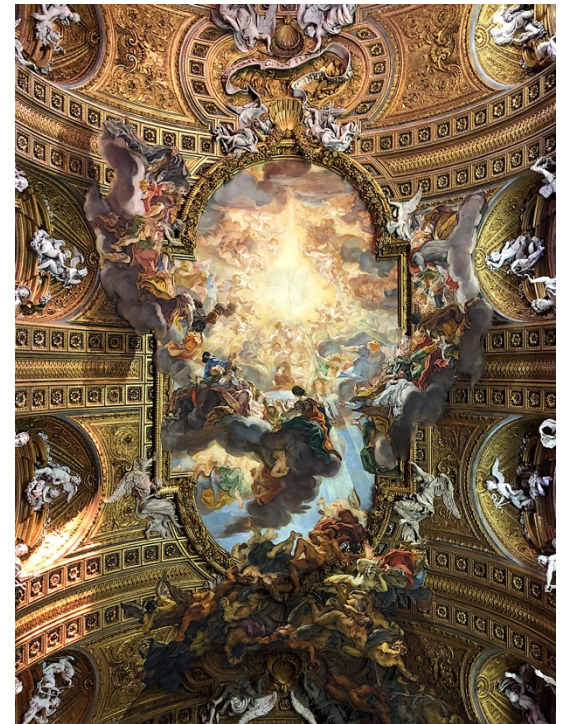
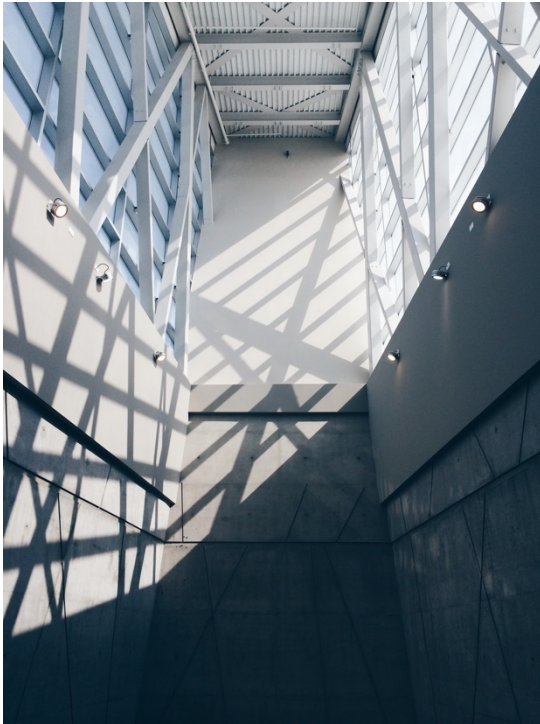


FEEL ...The breeze
...The rain
...The sun
...The earth



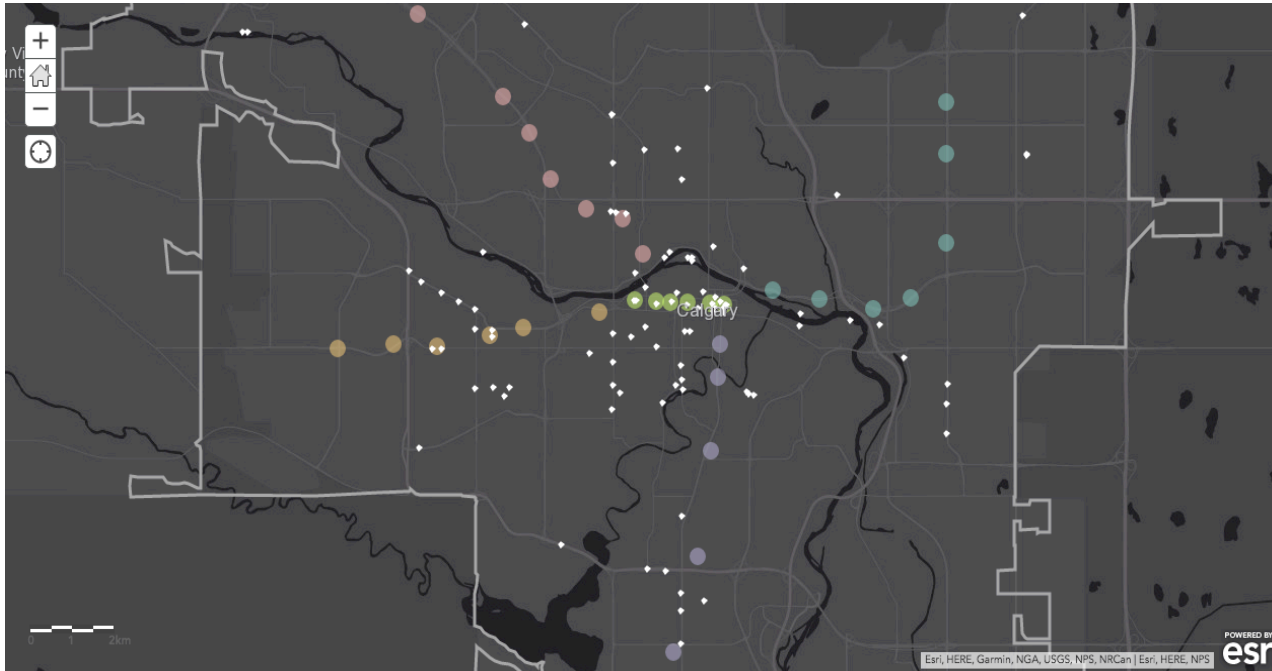
LISTEN ...To the birds
...To the leaves
...To the wind
...To the children

— Photography – Architecture and Interiors —



I enjoy taking photographs of spaces and places that inspire me. In framing my compositions, I am particularly drawn to simplicity, balance and linear perspectives. This selection of images comes from my travels to Rome, Copenhagen, New York City and Calgary.

Web Map – Accessibility of Public Art by CTrain



(1 of 2)

Station	Victoria Park / Stampede
Route	SW
Latitude	51.0385801371766
Longitude	-114.058308146575

[Zoom to](#)

(1 of 2)

Title	Ripple
Artist	Sky Spirit
Address	12 Street S.E. by 8 Avenue S.E. (parklet)
Description	Seven pathways coil towards a central meditative space which hosts four motifs to represent the stages of life and compass points.
Website	More info

[Zoom to](#)

For an assignment on web mapping, I decided to create a visualization of the accessibility of public art from Calgary's light rail transit system (CTrain). Train stations are divided by route (and coloured accordingly) while locations of public art are shown in white. I configured the pop-up windows to display information about both the stations and the particular works of art including locations and further information that can be found online about the artists.

Ultimately, I determined that there is little to no correlation in the proximity of public art to CTrain stations with the exception of the stations in Calgary's downtown core. It also became clear to me that the data for public art locations on The City of Calgary's open data portal is vastly incomplete. There are many other locations of public art in the city which would have evidently changed the outcome of the visualization.

Pottery



Assorted Vases and Cylinders. Clay and glaze. I have been very interested in pottery and wheel throwing since I first learned in my high school art classes. These vessels were created more recently at a local pottery studio in Kelowna, BC. For these works in particular, I was most interested in developing smooth and proportional shapes as well as building technique with even-walled cylinders. With respect to design, I have found pottery to be helpful in understanding form, volume and unity.

Photography – Nature



With the majority of my childhood spent in the outdoors of Alberta and British Columbia, my love for the natural environment acts as the basis for my interests in sustainability and environmentalism. I strongly believe in the restorative powers of nature with respect to physical and mental health. I enjoy recording my experiences of the outdoors through photography and am particularly interested in aspects of colour and balance that can be found in the natural world.

— Pathway Revitalization —



Pathway Revitalization. Collage of magazine cutouts on paper (A3). The first step of the community intervention project that I worked on in Edinburgh was to visit a randomly chosen location and make observations for potential interventions. Some of my immediate thoughts revolved around incorporating a mural or decorative elements to this pathway between a long, brick wall and a sharp, steel fence (a relatively hostile-feeling space). This collage represents my initial thought process in attempting to create a more inviting and lively pathway for community members to enjoy.



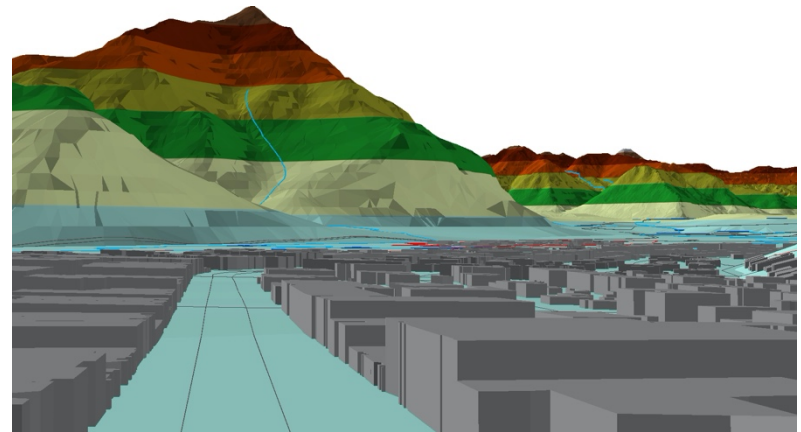
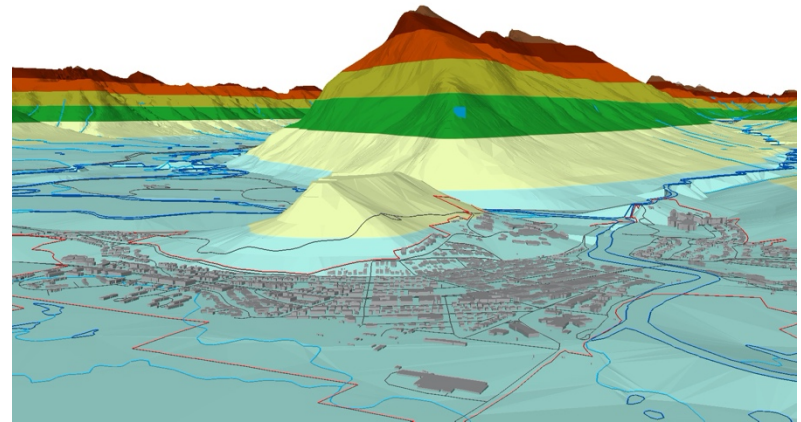
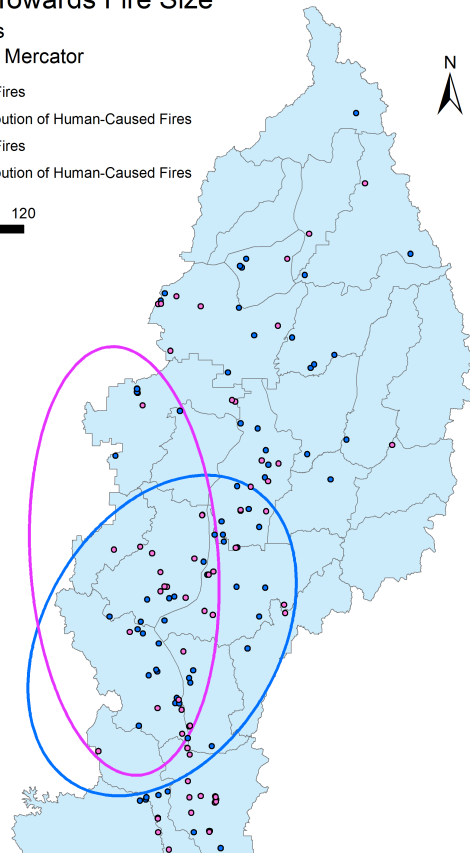
Geographic Information Systems (ArcGIS)

Directional Distribution (Standard Deviation Ellipse) of Forest Fires in The Okanagan Fire Zone From 2017 to 2018 Weighted Towards Fire Size

Created by: Colin Lees

Map Projection: World Mercator

- 2017 Human-Caused Fires
 - 2017 Directional Distribution of Human-Caused Fires
 - 2018 Human-Caused Fires
 - 2018 Directional Distribution of Human-Caused Fires
- 0 15 30 60 90 120
Kilometers



Through a variety of GIS courses in my undergraduate degree, I have learned about the manipulation, visualization and interpretation of spatial data. With ArcGIS specifically, a few of the skills that I have acquired are spatial pattern analysis, digital terrain analysis, geocoding, web mapping and time series visualizations. The screenshots above show examples of directional distribution analysis of forest fires in the Okanagan as well as a digital terrain analysis of the Town of Banff.

Western Division of the Canadian Association of Geographers (WDCAG) Conference
“Finding our Way in the Twenties, and Why Geography Matters More than Ever”
March 13-14, 2020 • Prince George, BC



For more information on attendance and presentation opportunities, contact:

 UBCO Geography Course Union  geog.ubco@gmail.com



As the President of UBC Okanagan's Geography Course Union, I had the opportunity to plan and organize a variety of events from social nights to academic conference trips across Western Canada. Creating a sense of community with this course union was important to me because it allowed students to gather and strengthen connections with their peers.

As one of the founding members of this club, I personally developed a unique course union identity through the creation of design criteria and logos to be used across a variety of mediums and methods of communication.

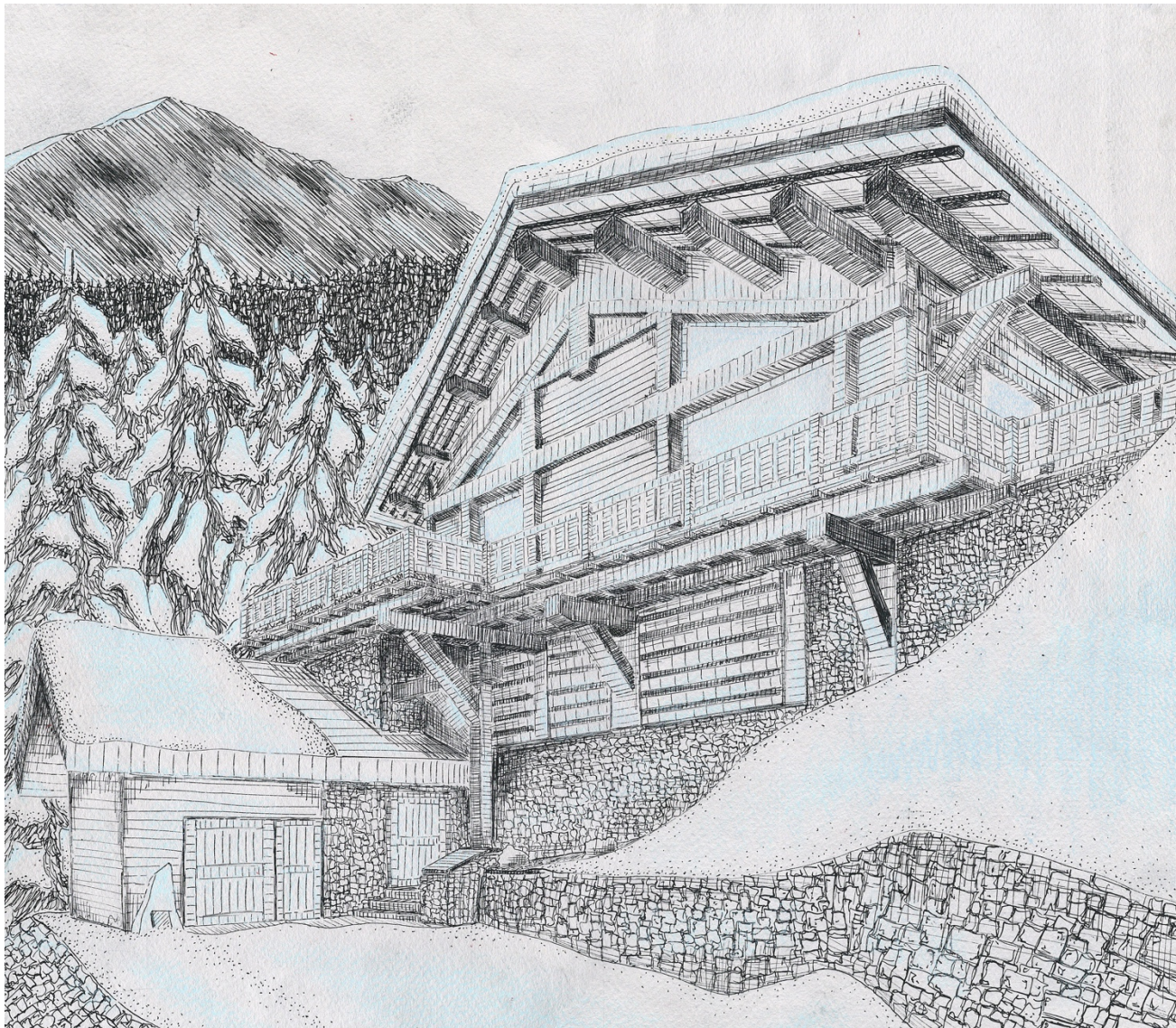
UBC Okanagan's geography department is a mix of both human geography and physical geography. As a result, the logos that I created show both of these disciplines simplified into skyscrapers (urban environments) and mountains (natural environments).

— The Doorways of Craigentenny —



The Doorways of Craigentenny. Black-and-white photographs. In walking through the community of Craigentenny in Edinburgh, I was particularly interested in the bland and lifeless doorways to the houses. To me, the facades of these houses were very representative of the monotony and homogeneity of typical suburban neighborhoods that can be found all over the world.

Winter Chalet



Winter Chalet. Artist pen and coloured pencil on paper.

— Camera Study in Watercolour —



Camera Study. Watercolour and ink on paper.