



FALL 2023 Master of Landscape Architecture Application Portfolio

The University of Calgary

Christie

KWAN

Table of Contents

Resume

Statement of Intent

1-2 The University of Alberta Park (*3D rendering*)

3-4 The Bear Chair (*Children's Furniture Design*)

5-6 The Yin & the Yang (*Decor series*)

7 Auden (*Jewelry & Brand Design*)

8 Ceramics

9 Abstract Sculpture

10 Fruit & Vegetables (*Charcoal Still Life*)

Table of Contents (cont.)

11 The Honey Watch (*Watch Design*)

12-13 Desktop Organizer (*Furniture Design*)

14 The Friendly Ghosts (*Pattern Design*)

15 Cafe Series (*Recipe Design*)

16 The Money Plant (*Graphite*)

17 Minitaure Muttart (*Scale Model*)

18 The Concord (*Photography & Perspective*)

19-20 Live Edge Table (*Furniture Design*)

The University of Alberta Park

3D rendering

1

fusion 360, procreate





This playground was designed for the Arts Quad of University of Alberta's North Campus. I wanted to create a site for stress relief for students and faculty members, that integrates well into the already existing features of campus. Design inspiration was taken from aesthetics of the University's Rutherford Library.

It features eight large-scale components, including a clock tower, coliseum-style sandbox, theatre-style seating area, triple swingset, vintage compass-style carousel, monkey bars and a dual slide tower to emulate the old world academia style of the library. These particular features were designed for adult use and are thus modelled at a larger scale to accommodate adult sizing and the larger capacity of campus members and visitors.

A poster (left) was additionally created to promote the park's features. The design follows a text-book-style formatting to further match the theme.



UNIVERSITY OF ALBERTA NORTH CAMPUS:

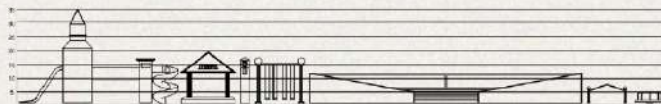
Rutherford Park



Located on the Arts Quad of the University of Alberta, Rutherford Park seeks to serve as a site of stress relief mainly for students and faculty members, in addition to visitors of the University. Its target demographic is between the ages of 17-27, with all components constructed on a much larger scale in comparison to a typical playground.



Heavily drawing inspiration from features of the University's very own Rutherford Library, its components emulate the library's aesthetic of old world academia in order to compliment the already existing features of the University.



The playground's eight unique features are primarily composed of marble, brick, brass and stained mahogany wood. Components include a grand tower featuring a dual slide combination, coliseum-style sandbox, triple swing set, amphitheatre-style seating arena, monkey bar set, clock tower and a carousel modelled after a vintage compass.





The Bear Chair



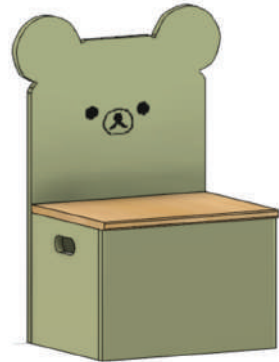
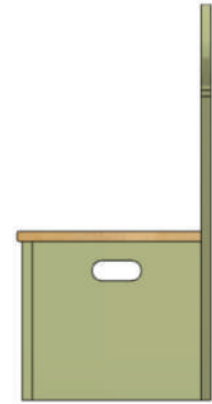
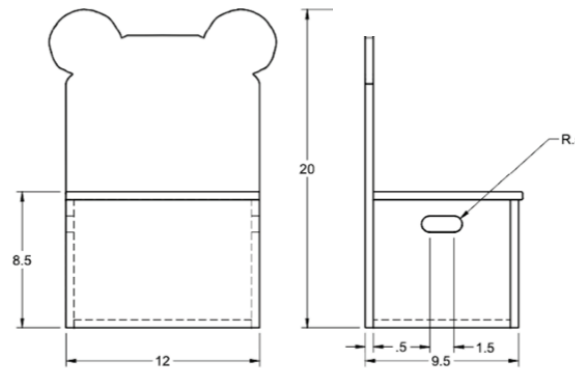
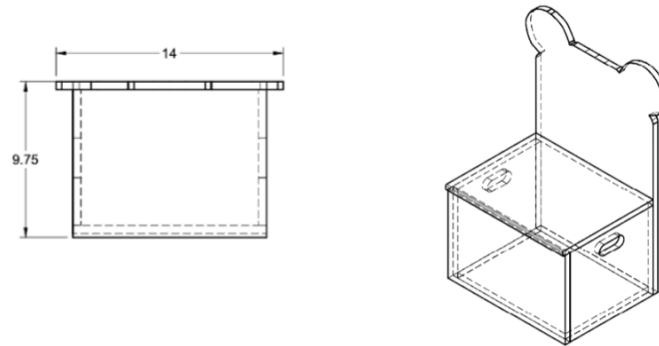
plywood
brass
acrylic paint
satin wood finish

(Children's Chair with Storage)



(9.75" x 20")

Furniture Design



Designed for children ranging from the ages of 4-6, this chair features a hinged-lid seating compartment to provide additional storage space and dual rounded-edge handles for easy transport. The form of a bear was chosen for its organic shape, and all exposed edges were routed to in order to reduce sharp edges.

A muted green paint finish was chosen for its gender-neutral tone, with a clear satin wood finish applied on the seating for easier cleanup and increased durability. The aim was to create a parent and child-friendly design.

The style of the bear is based on popular Japanese children's character Rilakumma.

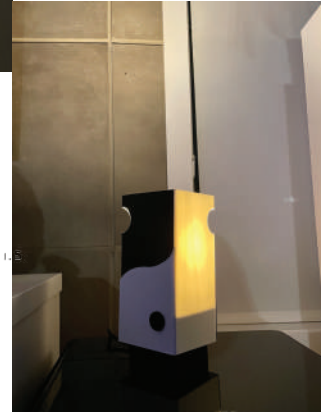
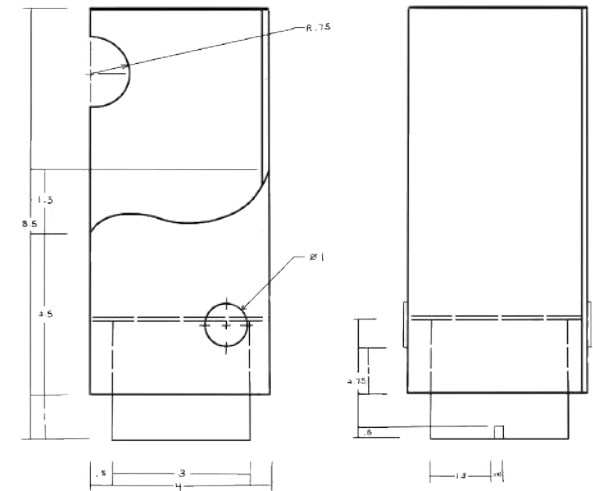
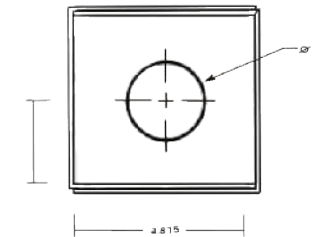
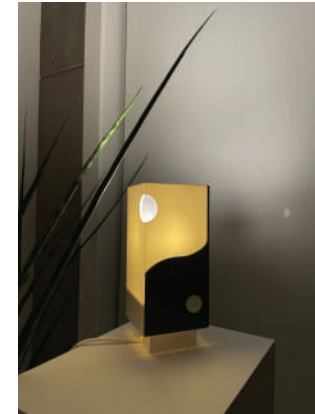
The Yin & The Yang



This light shade set is inspired by the symbol of the Yin and the Yang, designed to accommodate the Ikea HAVSRIS light cord and made from sintra that was heated and folded to manipulate its form. Asymmetrical circular cutouts were added to allow for increased light exposure and to offer a modern take on the traditional symbol.

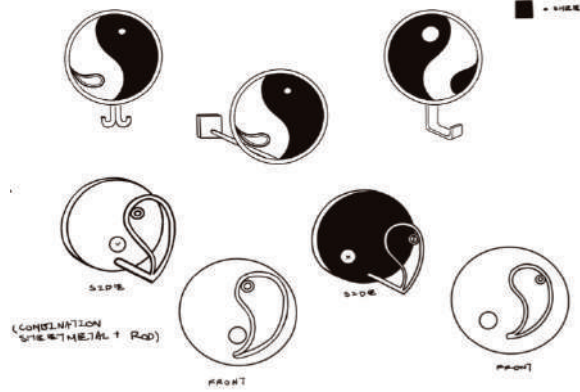
(4" x 8.5")

sintra



Decor | sintra light shade

The Yin & The Yang



initial ideation

The design of these wall hooks were again inspired by the traditional symbol of the Yin Yang. Following the consideration of material waste and a weak initial prototype, the idea of using an offcut piece for the extrusion developed. Each sheet metal piece was cut from a fibre-laser cutting machine, with the steel rod tack welded onto each for strength. The welds were done on the rear end of each piece and grinded down from the fronts and backs to achieve a cleaner final product.

Prototyping was done in three different sizes: small (for jewelry), medium (handbags) and large (clothing). The orientation of each hook can be placed depending on its intended use.

Usage of cream-coloured hardware completes the traditional look of the symbol.



Auden

Auden was created out of my personal love for jewelry. Every piece is handmade and designed to be simple, dainty and wearable for the everyday. During its three-year participation, Auden has sold over 50 units at the Student Design Association's annually held pop-up shop, Built.

**Thank you for
your order!**



care instructions



please keep away from
moisture



avoid direct contact with
perfume or lotion



wipe with a clean cloth to restore
shine



remove before sleeping or physical
activity

If you encounter any issues with your jewelry, please do not hesitate
to contact: info@audenmacle.com,
thank you so much for your support!

audenmacle.etsy.com



A u d e n



logo & business card: Procreate, Adobe Illustrator



Each plate was created and finished with the help of a pottery wheel.



8 Ceramics

clay

gloss glaze

transfer decal



Abstract Sculpture

This sculpture was visualized from the architectural interior of the Timm's Centre for the Arts, taking inspiration from its combination of curvatures and straight forms. The structure for the piece was first imagined through the form of a scaled macquette before being translated into wood.

The piece is entirely built from found wood pieces.



Sculpture

(2.75 x 5 ft)



compressed charcoal
willow charcoal
conte
on steel vellum

(19.5" x 25")

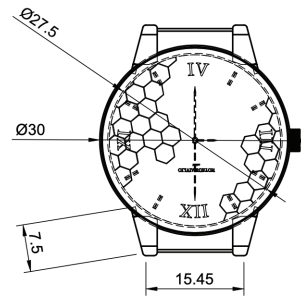
Fruit & Vegetables

The Honey Watch

This watch is a redesign of Olivia Burton's Embellished Bee Watch. Taking inspiration from the watchband, the aim was to create a compliment to the design of the original strap without over-distracting from it.

An asymmetrical honeycomb design was placed onto the watchface, with the watch's crown modified into the shape of a hexagon to match the theme.

ORIGINAL:



fusion 360

Watch Design



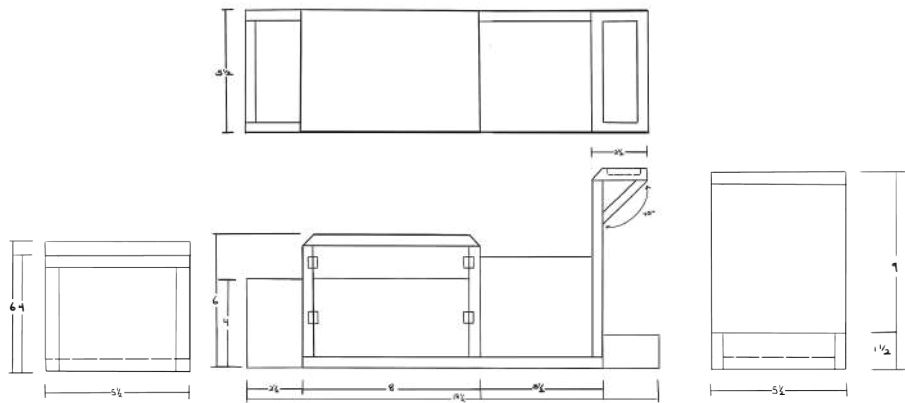
(18.5 x 5 x 9")

Furniture Design

1/4" MDF

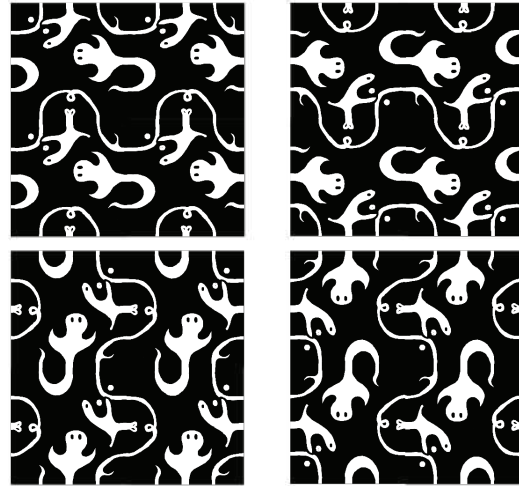
Desktop Organizer

12



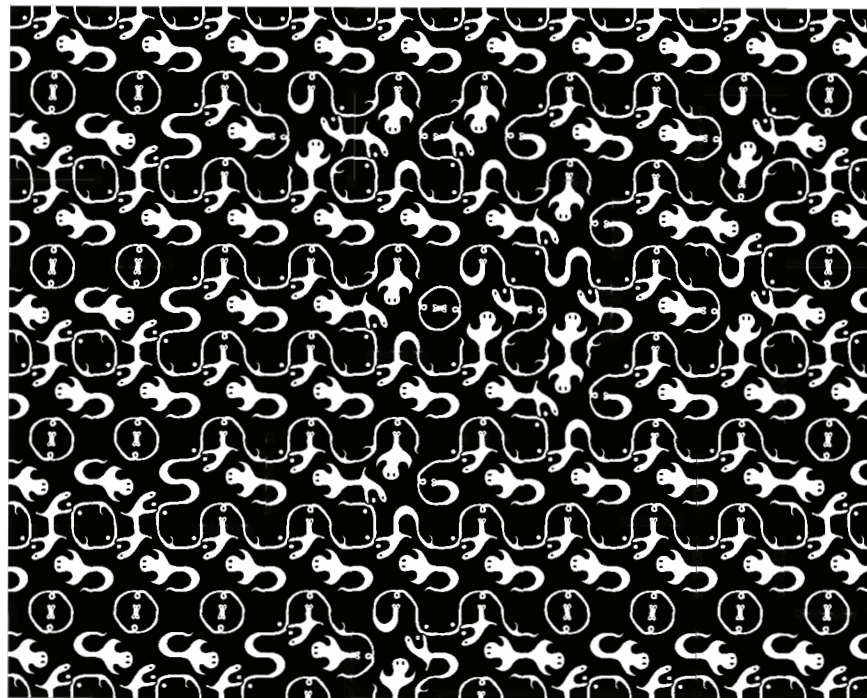
This prototype of a desktop organizer was constructed from 1/4" ultra-light MDF and was designed for the purpose of storing a variety of items, including cosmetic products and tools, hair accessories and jewelry. It features a removable compartment within its lower drawer for the increased interchangeability of products that can fit inside.





The Friendly Ghosts

This pattern was formed beginning with a singular square, with twelve total connecting points (three connecting points at each side). A new pattern design can be created through different orientations of each tile.



"The Friendly Ghosts"

Recipe Design: Cafe Series

serves one

5
minutes
to make

Iced Vanilla Matcha Latte




Ingredients:

- 1 tbsp matcha green tea powder
- 1 tbsp hot water
- 1/2 cup ice cubes
- 1 tbsp vanilla syrup
- 1 cup milk (substitute almond/oat milk for creamier flavour)

STEP 1: Whisk matcha powder into hot water, melting completely. Stir in vanilla syrup.




STEP 2: In a large cup, combine mixture with ice and milk. Stir thoroughly and enjoy!



Brown Sugar Toast

This simple treat which takes only minutes to make will be sure to satisfy your sweet tooth.

Ingredients: (serves 2 | 5-10 minutes)

		
White bread (2 slices)	Dark brown sugar (40 g)	Butter (40 g)

Step 1:
Combine the butter with brown sugar. Spread onto both sides of the bread.

Step 2:
Place bread onto a pan over medium high heat, cooking until each side is golden brown and sugar is melted, about 2 minutes each side. Wipe pan clean and repeat for other slice.

Enjoy!

adobe illustrator
procreate

Designs of my favourite recipes to make.

(8 x 10")

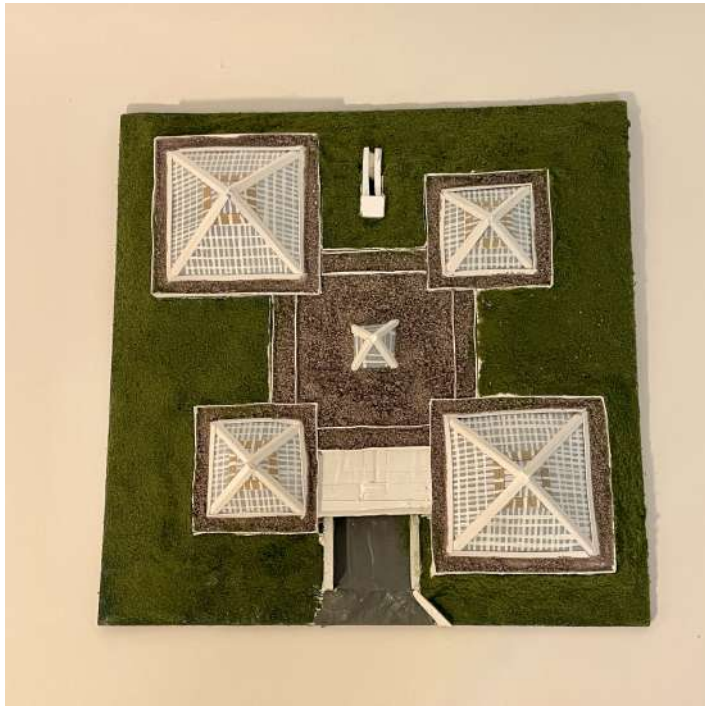
16

The Money Plant

(18 x 24")

graphite



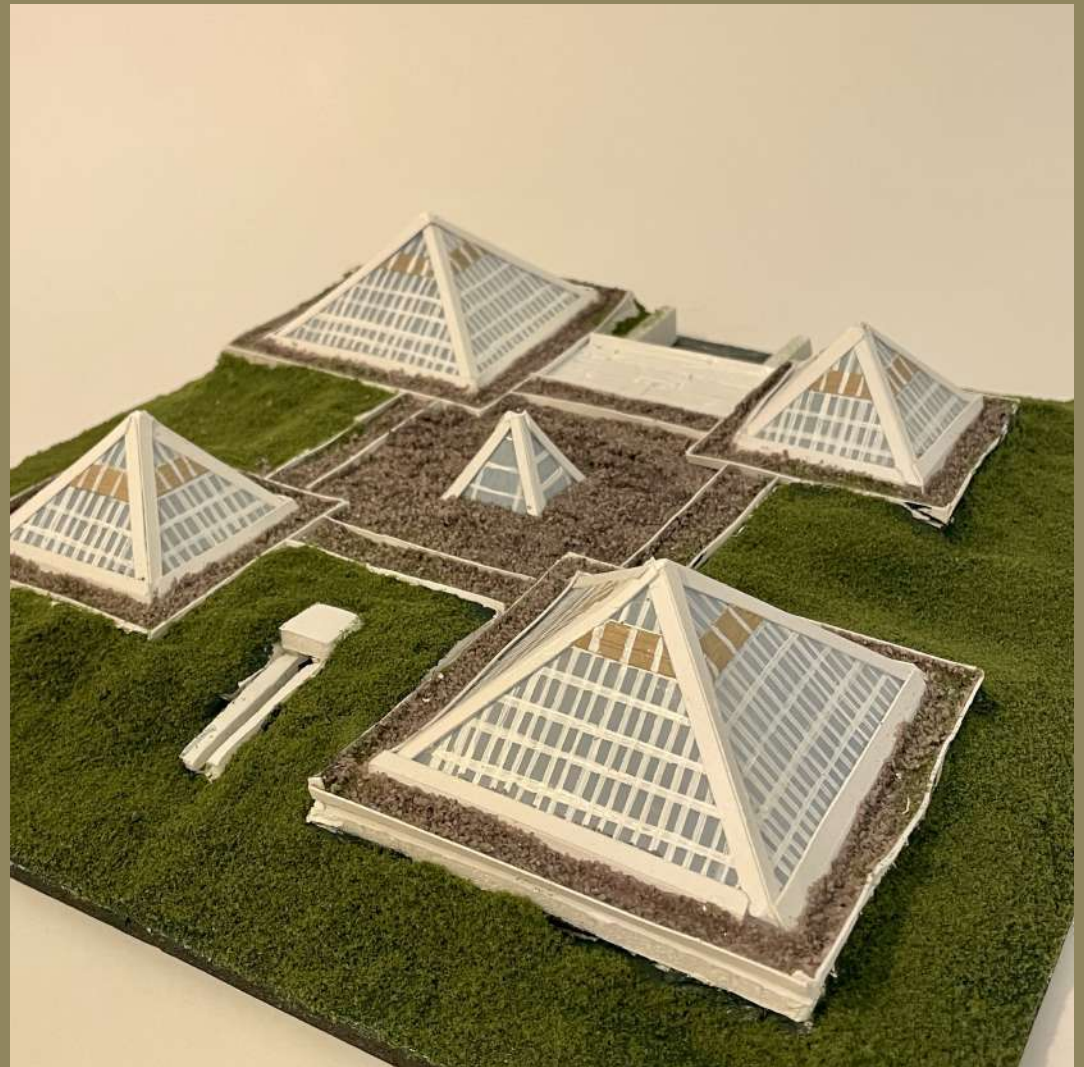


A scale model of Edmonton's Muttart Conservatory and its surrounding landscape.

sculpey
cardstock
foamcore
gravel
acrylic paint
faux grass

17

Scale Model



The Miniature Muttart (8" x 8")

The Concord



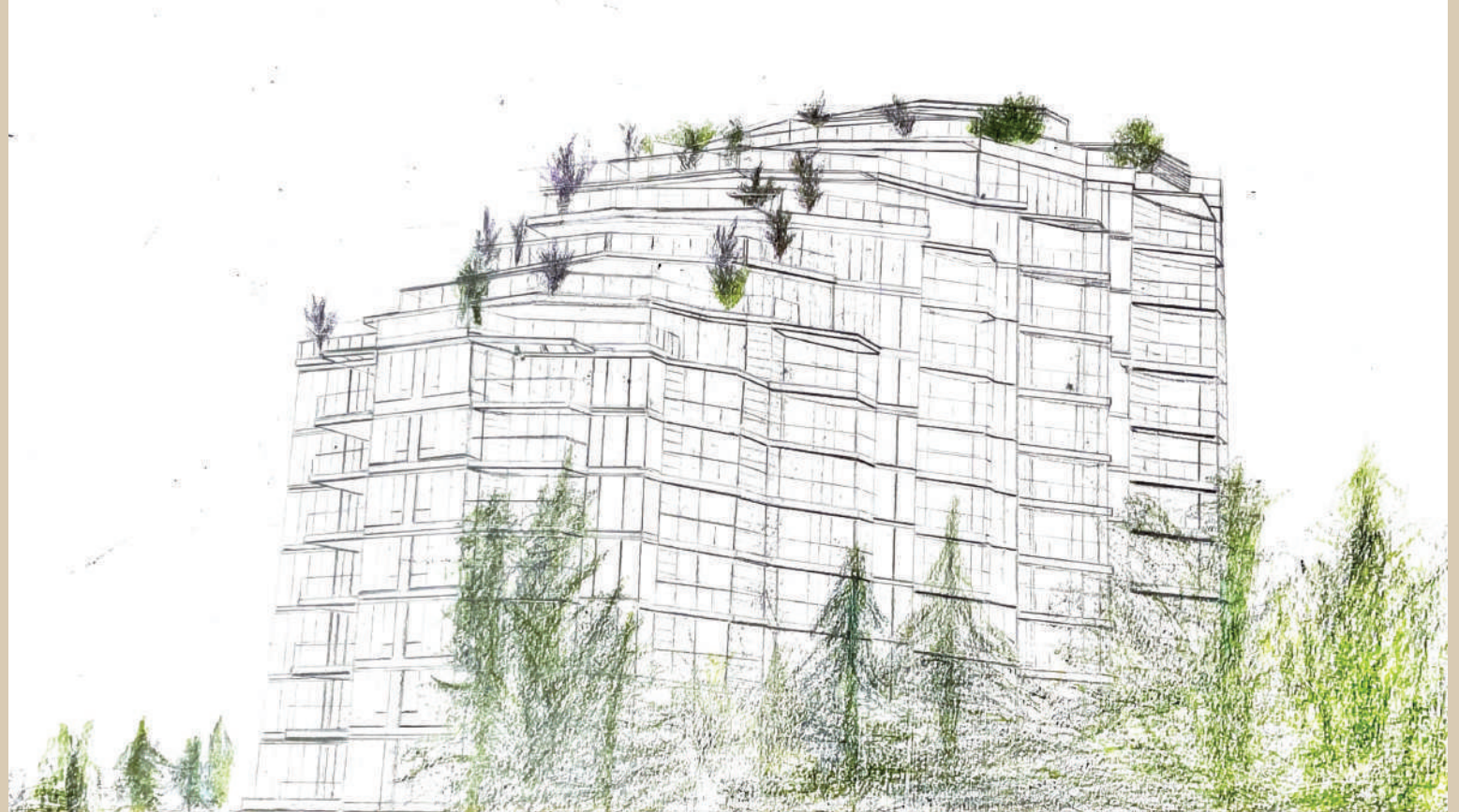
A one-point perspective piece of my favourite building in Calgary.

I captured this image when I visited Calgary's downtown river valley for the first time during fall. I found this view of The Concord extremely captivating due to the presence of greenery throughout its different levels and felt inclined to capture its beauty through a drawing.

graphite
coloured pencil

(18 x 24")

18





(19" x 24")

walnut
powder coated steel
epoxy & milk powder
osmo satin polyx oil
fusion 360 / 3D printing

Furniture Design



Live Edge Table

19

Live Edge Table

Design choices of this table were prioritized to not distract from its most beautiful element- the live edge walnut. The piece was cut at a 45-degree angle, paying careful attention to the grainlines when rejoining to achieve an aligned waterfall effect.

Epoxy mixed with black milk powder was applied to all splits in the wood for enhanced durability. The bark was preserved through a thick coating of polyeurathane, with cyanoacrylate glue applied to any weaker points. Finally, clip-on feet were 3D printed for a perfect fit onto the base and allow for an alternate orientation of the table. All exposed metal plating was rounded off to prevent exposure of sharp edges, and the welded steel legs were powder coated a flat black colour to further reduce distraction from the tabletop.

