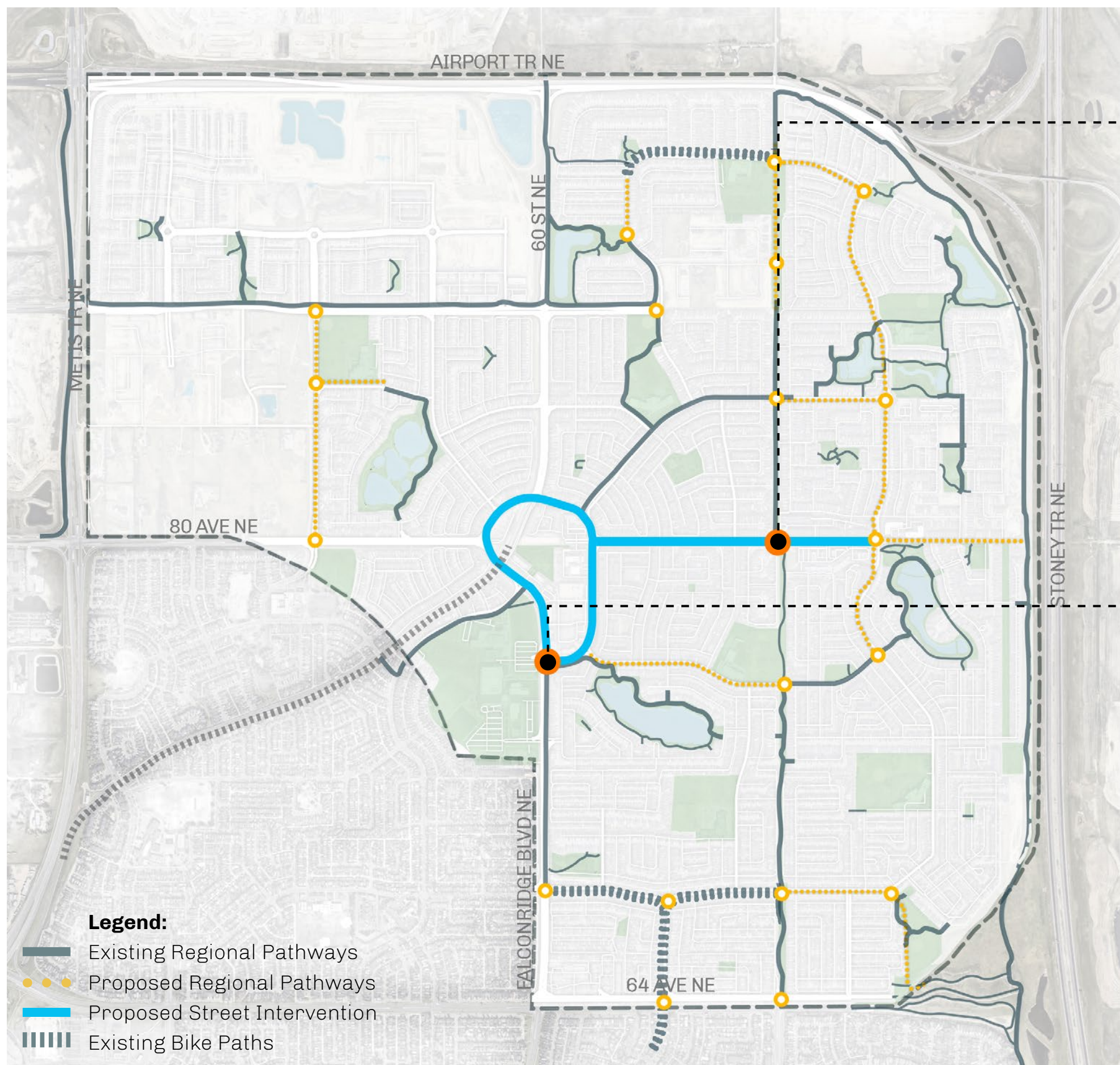


MOBILITY

Creating Complete Streets



01

Streets + Crosswalks

Currently, neighbourhood roads and streets in Saddle Ridge + Taradale are car-oriented and do not consider the needs of **alternative modes of transportation** such as walking, biking, and transit. There are **insufficient amount of crosswalks**.

02

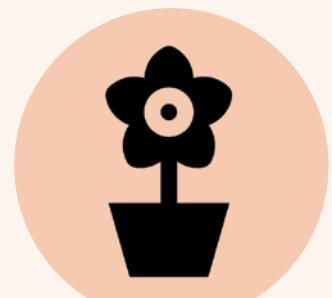
Roads + Intersections

383 traffic incidents have occurred with **5.5% involving pedestrians**. Most traffic incidents occur at higher traffic intersections. Saddletowne Circle is informally known as **“Saddletowne Speedway”** due to high speed traffic. It has been described as confusing to navigate and unsafe due to the **3-lane one-way design**.

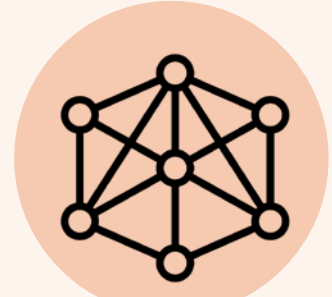
Goals



Safety



Beautification



Connectivity



01 Streets + Crosswalks

80th Avenue

Pedestrian safety is of utmost importance. It is recommended to include options for **biking, connections** between regional pathways, additional **crosswalks** with **traffic calming** measures, and **street beautification** using signage, lighting, and landscaping.

Raised Crosswalks



Pali Highway, Nuuanu, Hawaii

Visible Crosswalks

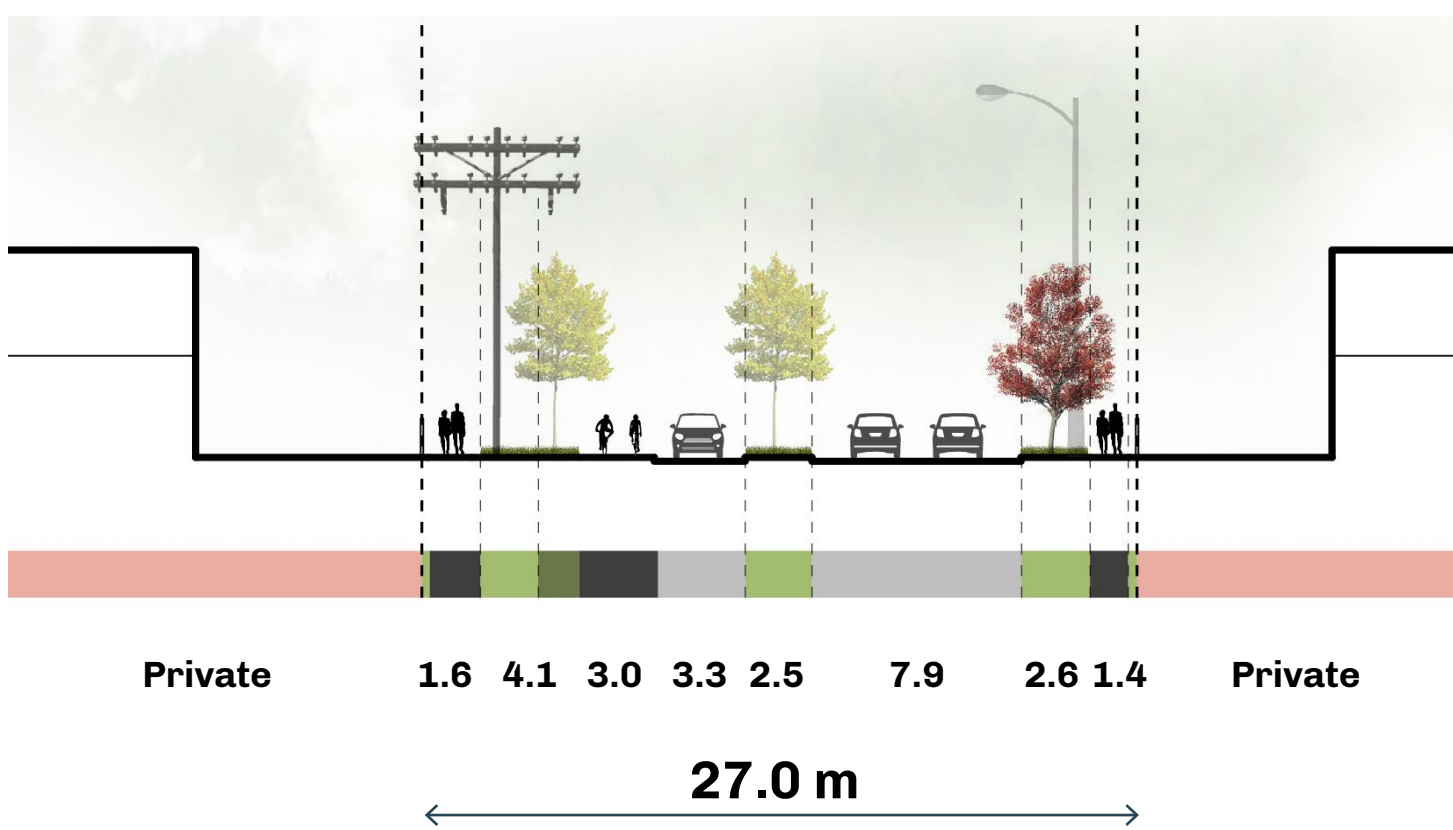
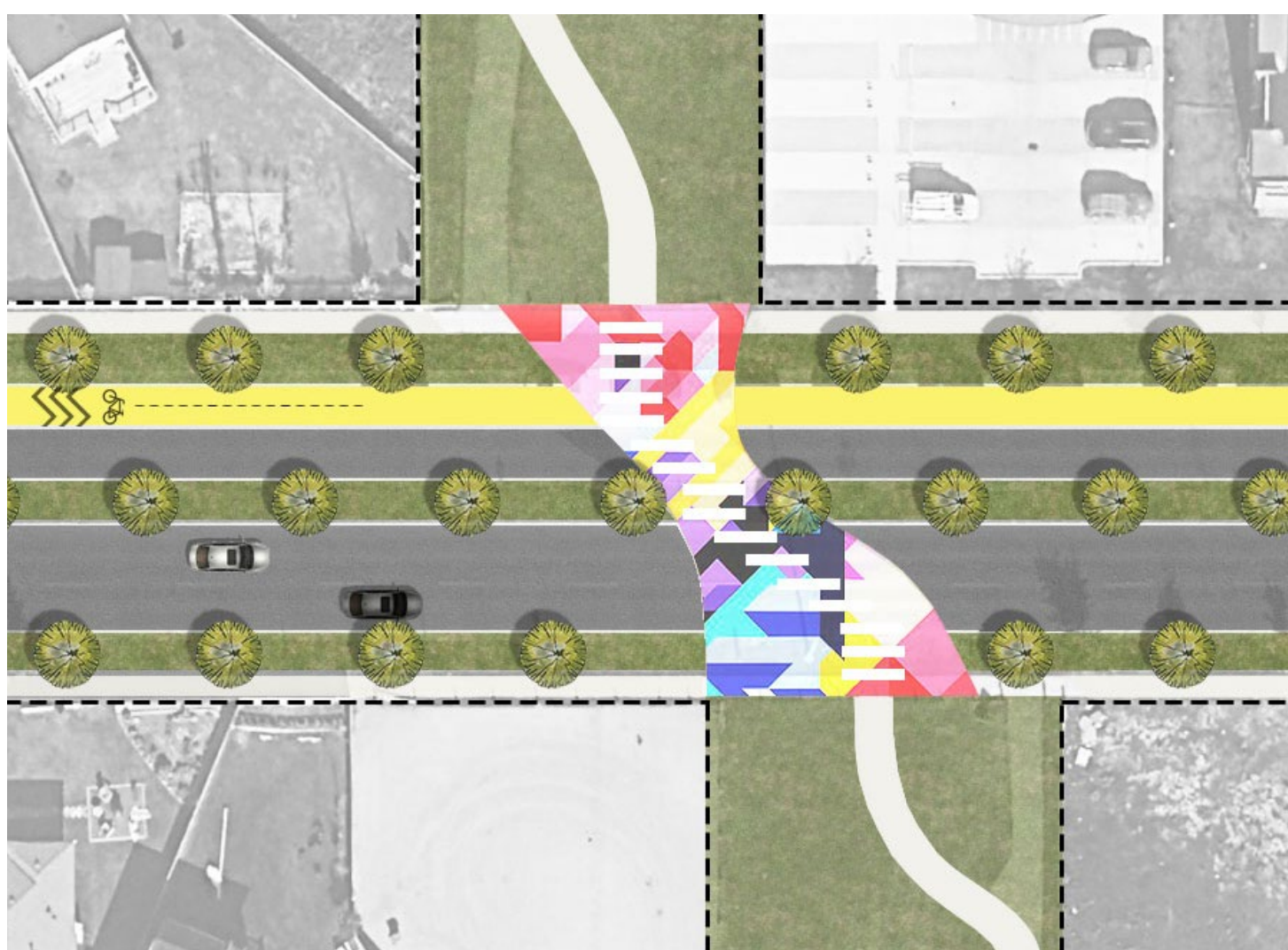


26th & Calvert Streets, Baltimore, Maryland

Bike Lanes



Portland, Oregon



02 Roads + Intersections

Intersection at Falconridge Blvd NE + Saddletowne Cir NE

It is recommended to attain **maximum traffic efficiency and safety** by converting the 3-lane one-way design to a standard **4-lane two-way design**. In addition, pedestrian needs should be better considered with **longer traffic crossing times** and implementation of **traffic calming measures**.

Two Lanes



Old Saybrook Main Street, Connecticut

Curb Cuts

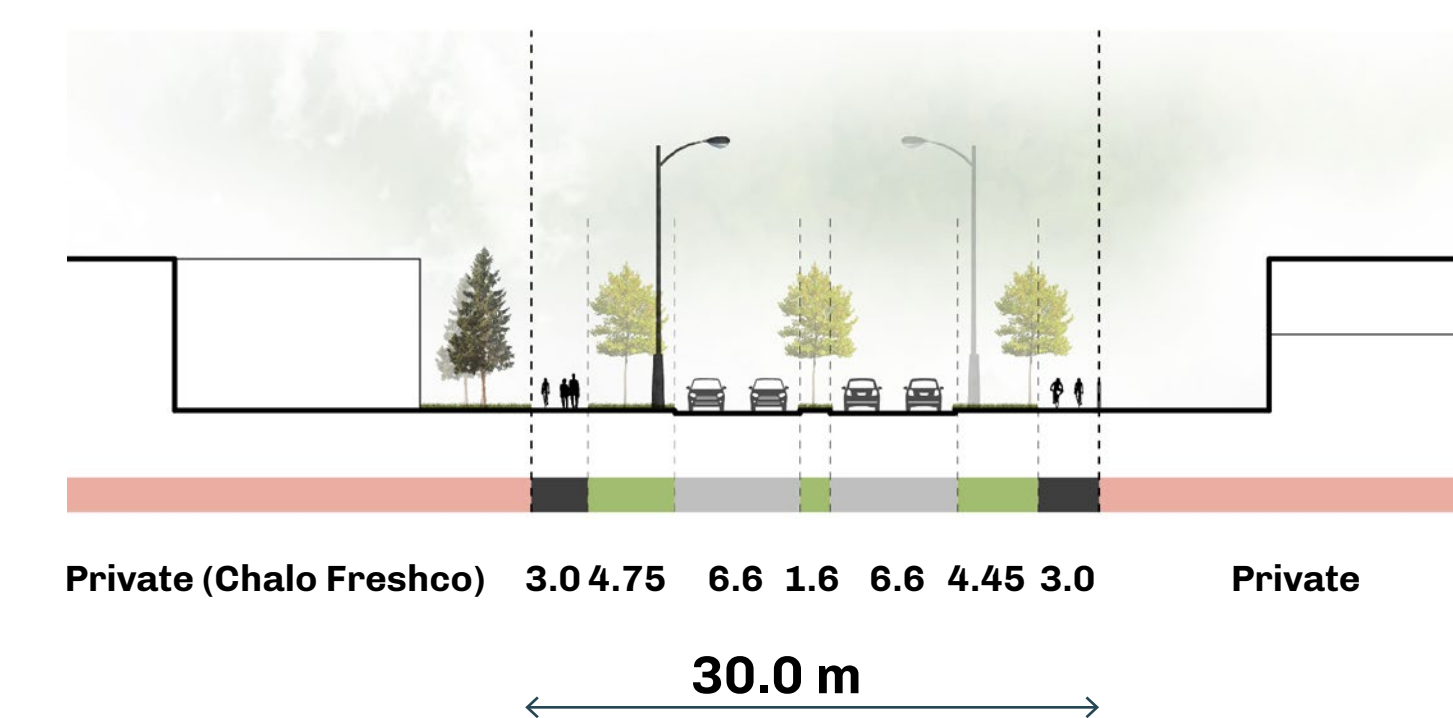
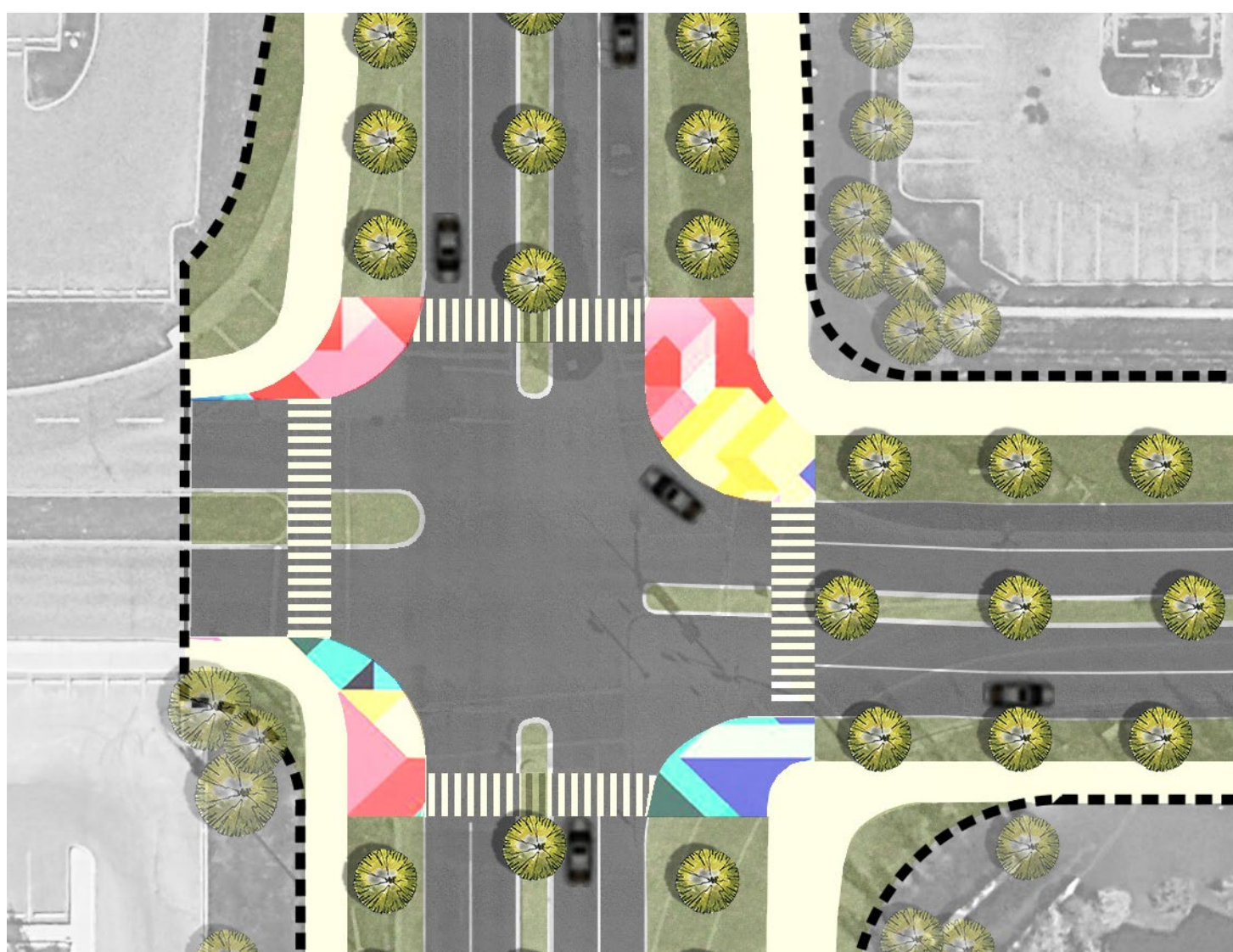


Silver Zones, Singapore

Reduce Turning Radius



Islington Street Lab Project Portsmouth, New Hampshire





OPEN SPACE

Revitalization of Existing Green Spaces



01 Linear Parks

The north-south utility-right-of-way is a corridor for **harmless abandoned sour gas pipelines**. This linear park is well used by residents as a place of passage and contains some regional pathways, although they are **disconnected** with difficult and **unsafe road crossings**. It also **lacks plants and trees** to naturalize the space and add biodiversity.

02 Neighbourhood Parks

A playground is accessible within a 5 minute walk in most areas of Saddle Ridge and Taradale. However, most playgrounds are **small** and **only suitable for young children**. Nearby **seating is very limited**.

Goals



Amenity Improvement



Multi-Generational



Naturalization



01 Linear Parks

Utility-right-of-way

It is recommended that this linear park be enhanced with **resilient landscaping** to create biodiversity, be strengthened with **better pathway connections**, **widened pathways** to accommodate biking, and the **addition of amenities** such as lighting, seating, trash bins, and **pet waste bags** for dog walkers.

Multi-Modal Trails Native Landscaping Trash Cans Pathway Connectivity



Stanley Park Causeway, Vancouver, B.C.



Calgary, Alberta



Lakepark, Malaysia



Kempensstraat, Antwerp, Belgium



Informal Skating Area



Pet's Park



Informal Play Area



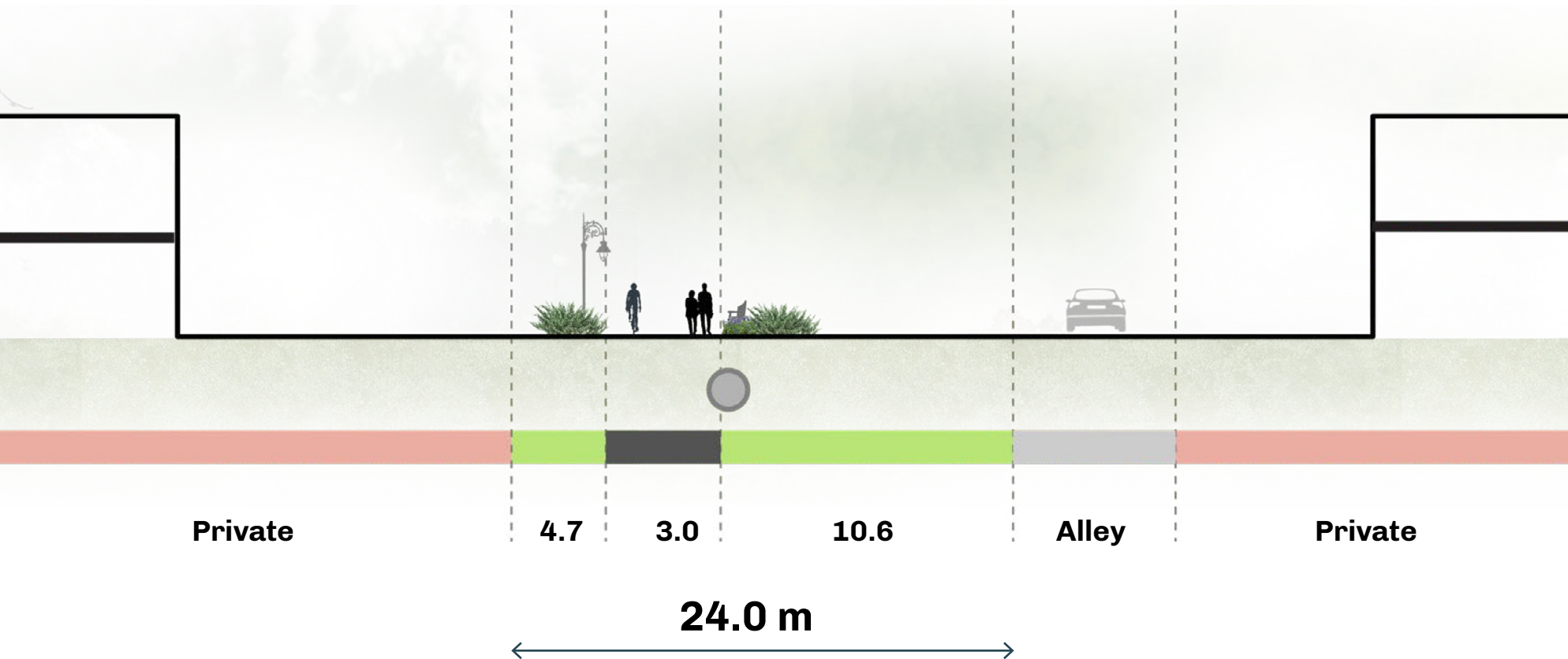
Community Gardens



Outdoor Exercise



Art Spaces



02 Neighbourhood Parks

Saddlemont Playground

It is recommended that neighbourhood parks are **well connected** and enhanced with **multi-generational amenities** that are **inclusive** of all ages, activity levels, and interests. Amenities such as seating, trash bins, water fountains, lighting, shelters, and **public washrooms** should also be included.

Community Gardens Activity Zones Off-Leash Dog Park Outdoor Gym



Cleveland Manor, Cleveland, Ohio



Solvallsparken, Rosendal, Uppsala, Sweden



East Village Dog Park, Calgary, Alberta

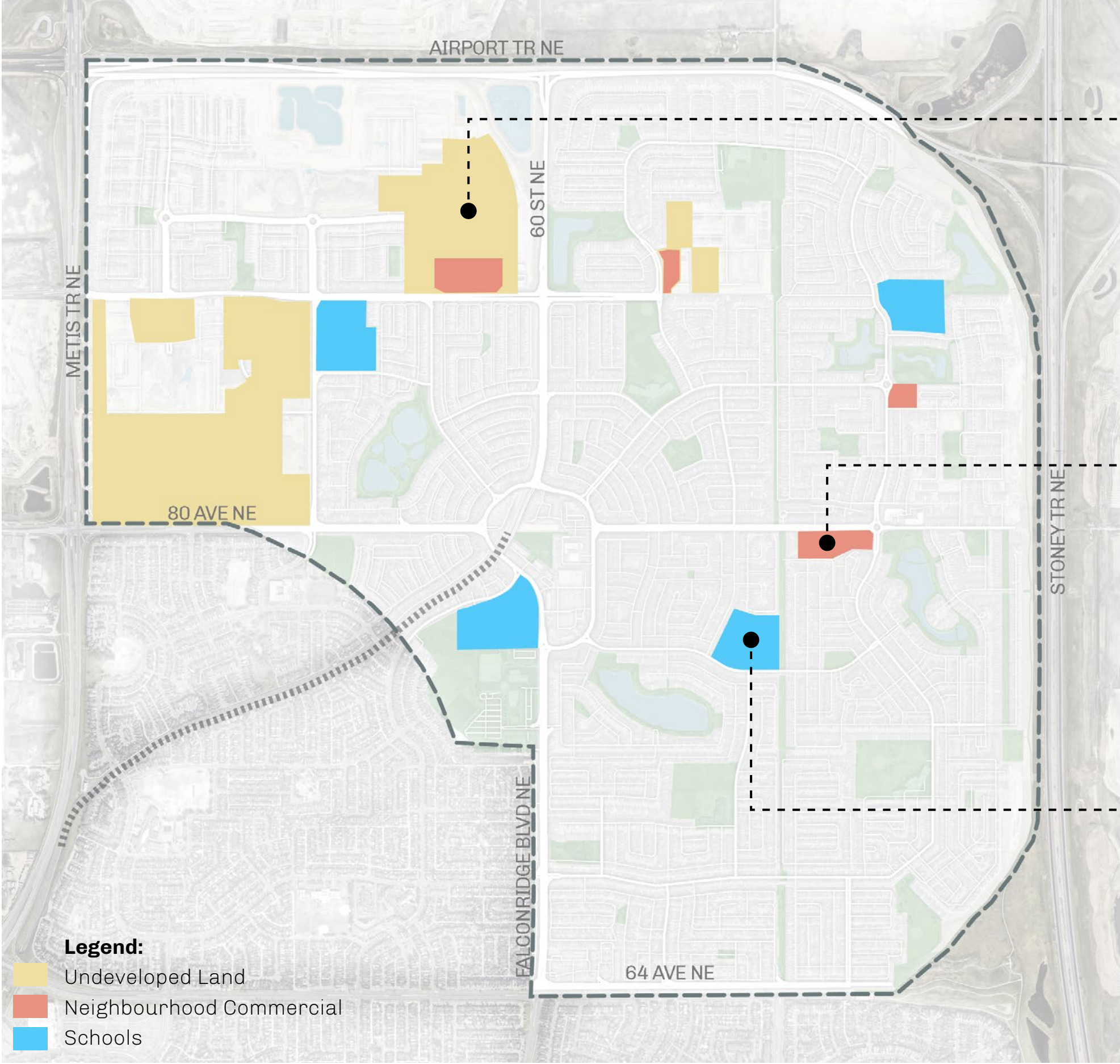


Wales, United Kingdom



COMMUNITY REVITALIZATION

Diversifying Uses and Encouraging Local Businesses



01 Housing

65% of homes in Saddle Ridge + Taradale are **single-family houses**. Saddle Ridge and Taradale account for **8% of all legal secondary suites in Calgary**.

02 Local Businesses

Currently, neighbourhood commercial areas are characterized by **strip malls** with **large parking lots**. There is also a noticeable amount of **home businesses**.

03 Schools

4 out of 9 schools are over capacity, resulting in students required to travel to nearby neighbourhoods to attend school.

Goals



Diversity



Economic Development



Accommodate Density

It is recommended to provide **more housing choice and diversity** to support larger-than-average **household sizes** and to maintain **housing affordability**. Currently, **mixed-use development types are missing**.

Mixed-Use



Downtown Bethesda, Maryland

Apartments

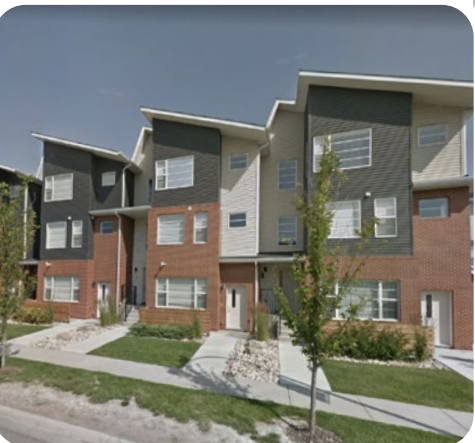


University District, Calgary, AB

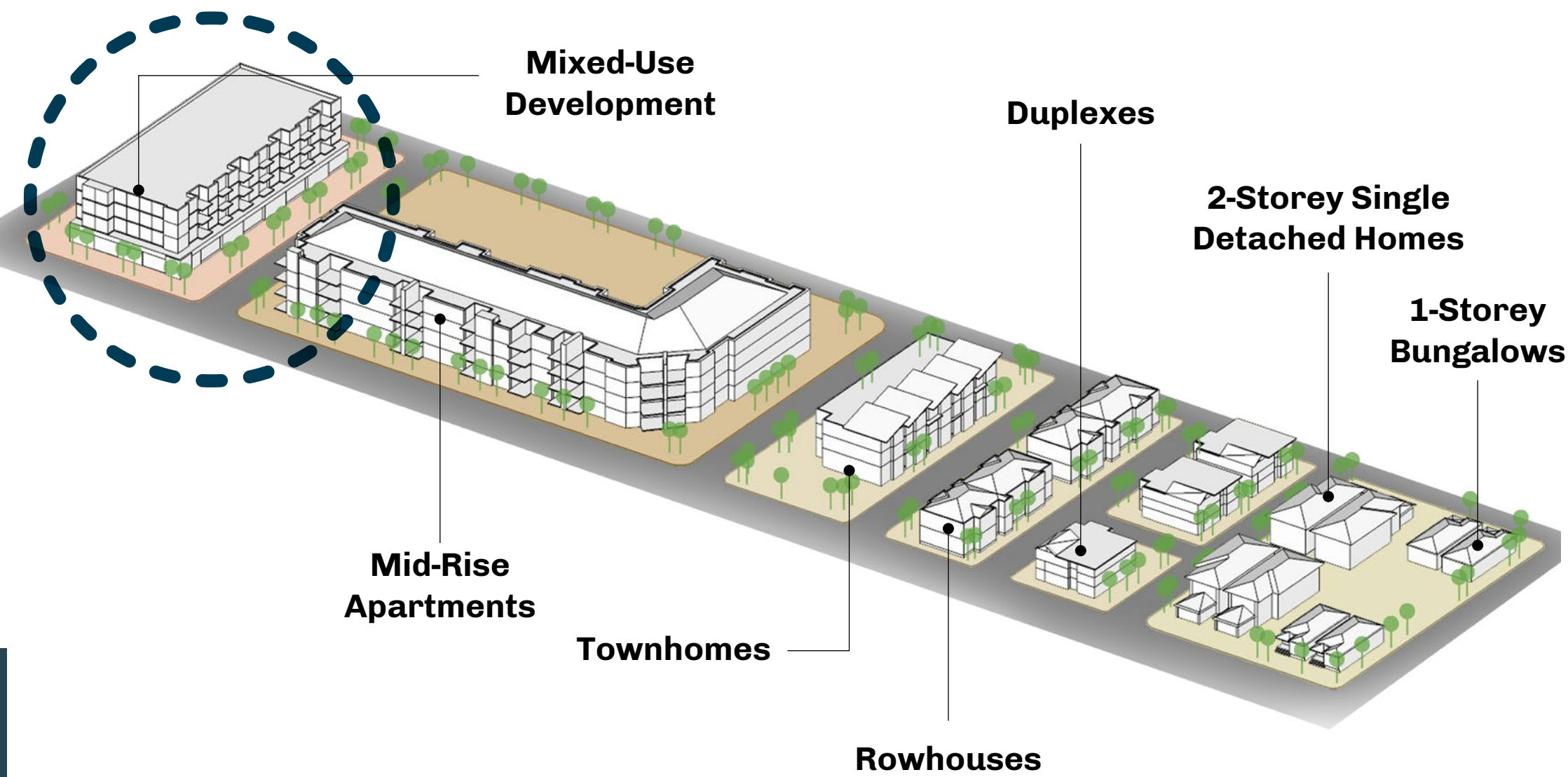
Townhomes



Taradale, Calgary, AB



Saddle Ridge, Calgary, AB



01 Housing

Mixed-Use and Missing Middle Housing

It is recommended to **support local business owners** by developing **business incubators** to encourage local business culture and **community empowerment**.

Business Development



Pop Brixton, London, UK

Youth Employment



Pop Brixton, London, UK

Flexible Drop-in Space

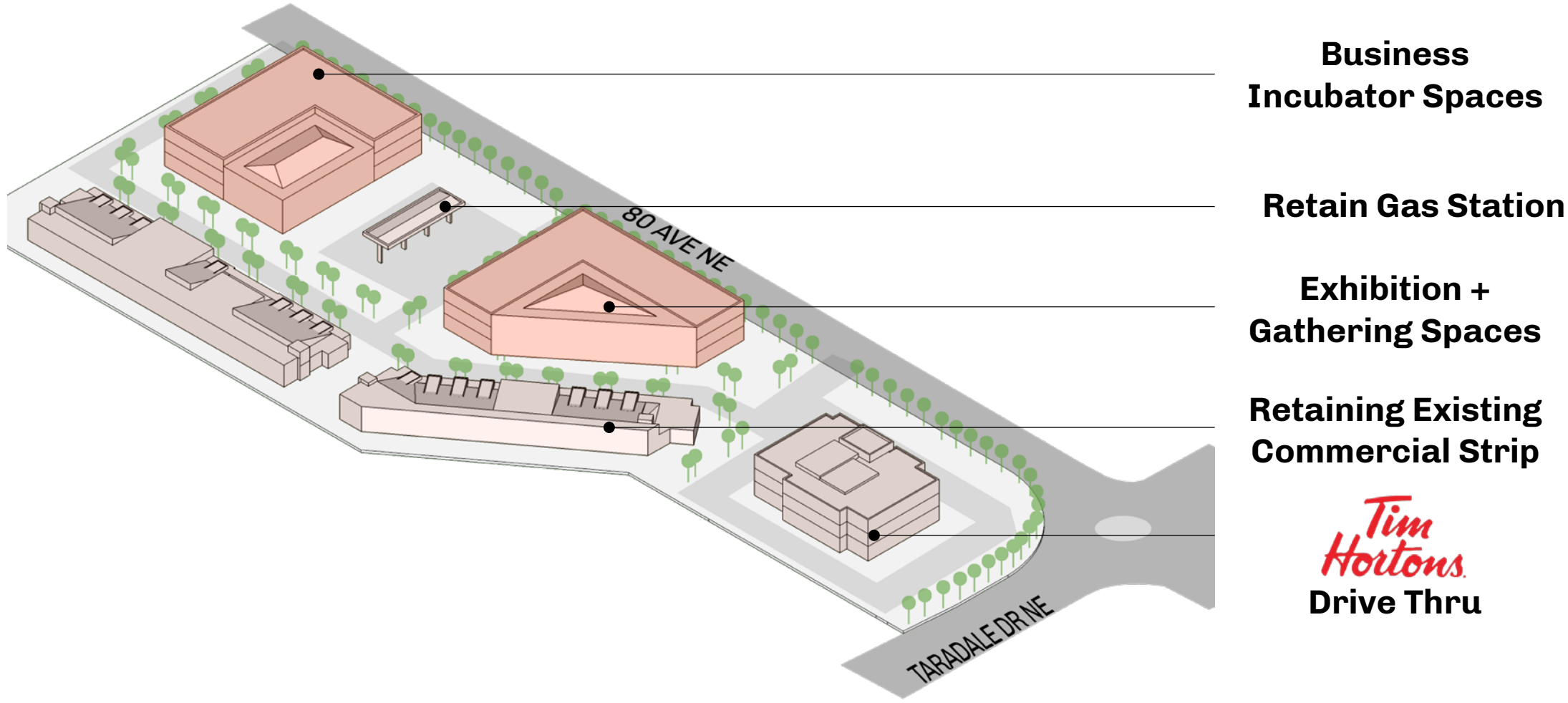


Pop Brixton, London, UK

Active Frontage



Mulvaney's, Sacramento, California



02 Local Businesses

Neighbourhood Commercial at 80th Ave + Taradale Dr NE

It is recommended to **expand existing institutional spaces** and add educational facilities to **accommodate more students and grade levels**. Due to space constraints, it is preferable to expand **vertically**.



03 Schools

Taradale Elementary School

Vertical Expansion



Prahran High School, Melbourne, Australia

Multi-Level Education



Baringa Drive, Queensland, Australia



Before



PLACEMAKING

Sense of Place

Goals



Vibrancy



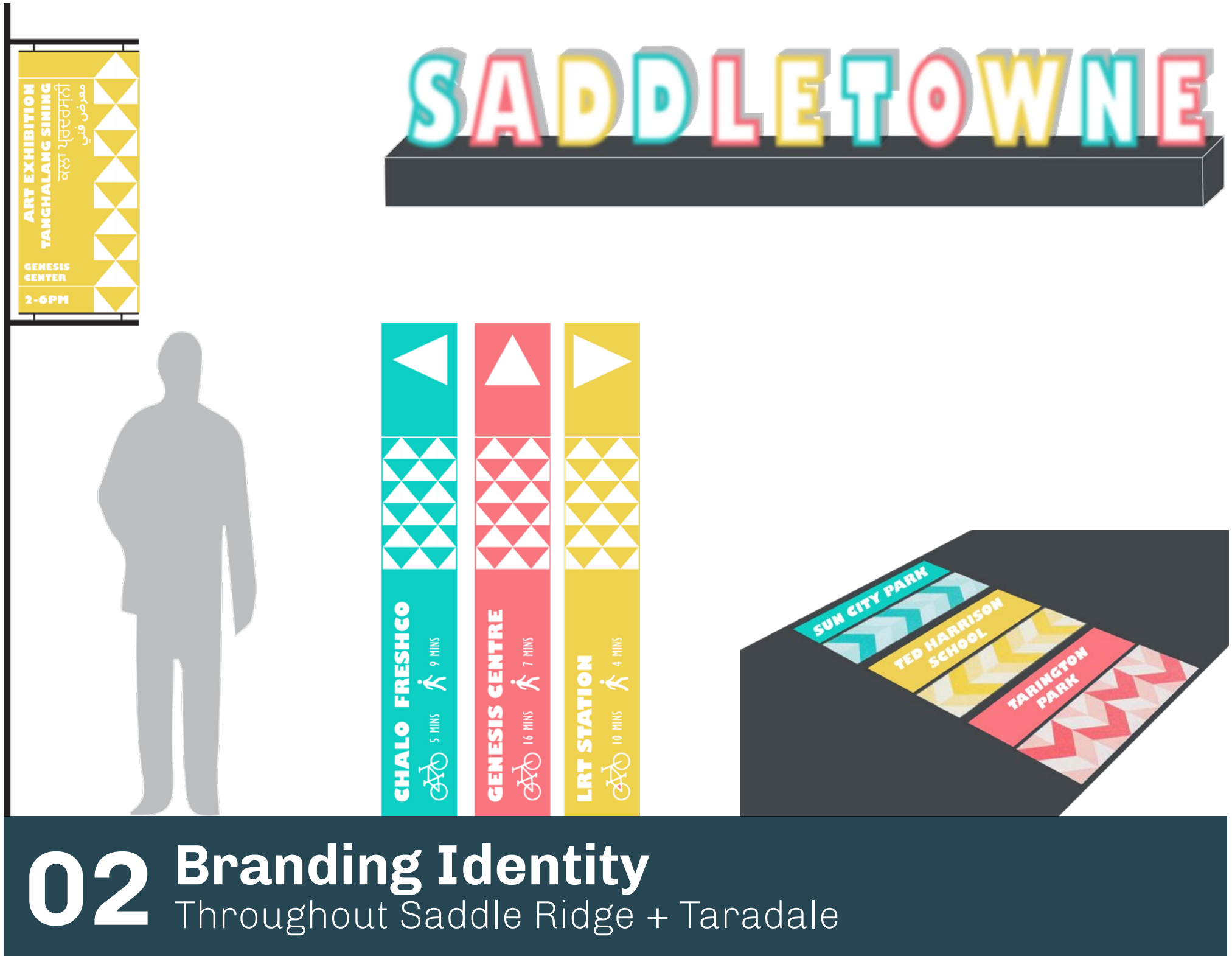
Community Identity



Celebration



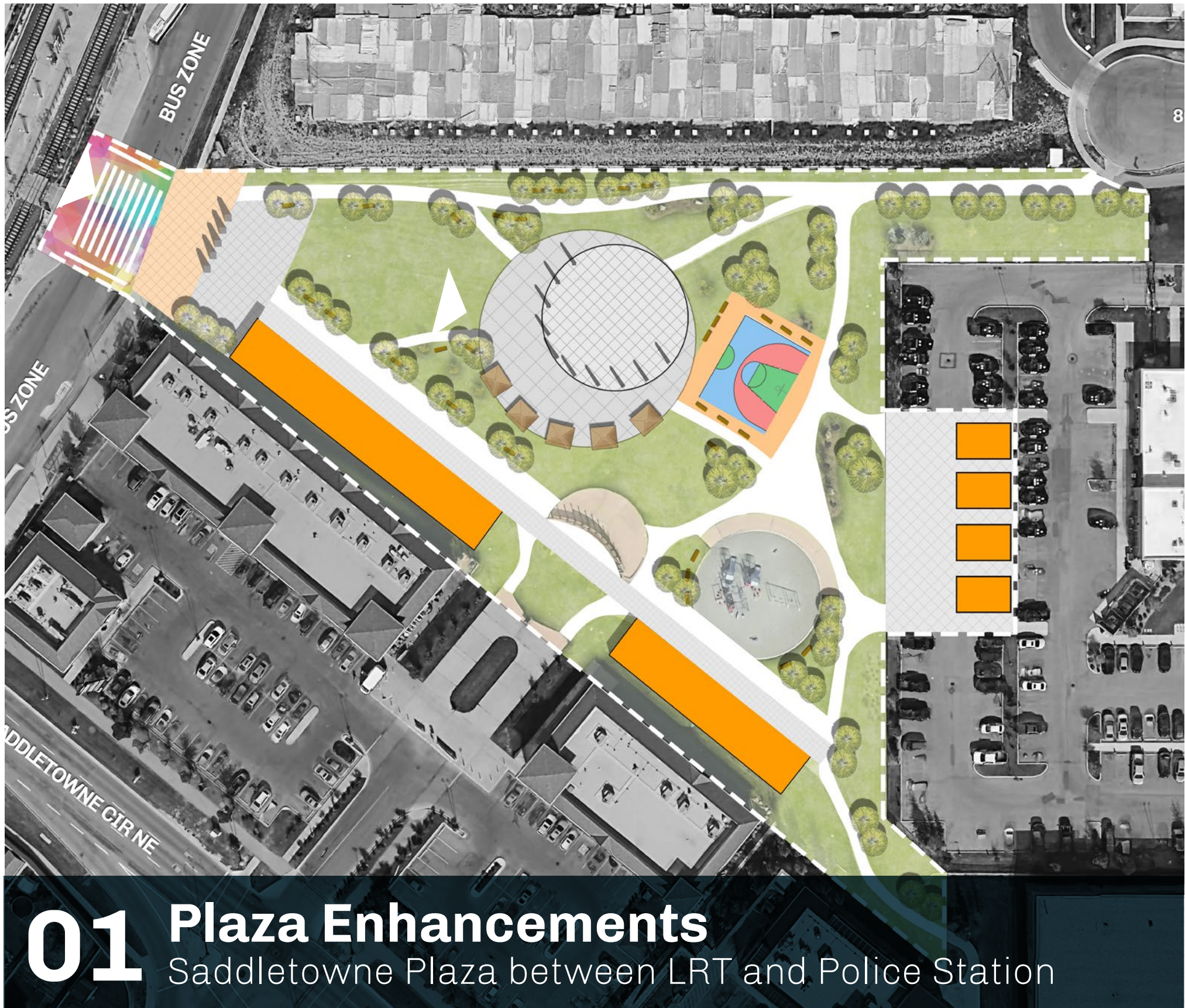
01 Tactical Urbanism
Plaza between Boston Pizza and Chalo Freshco



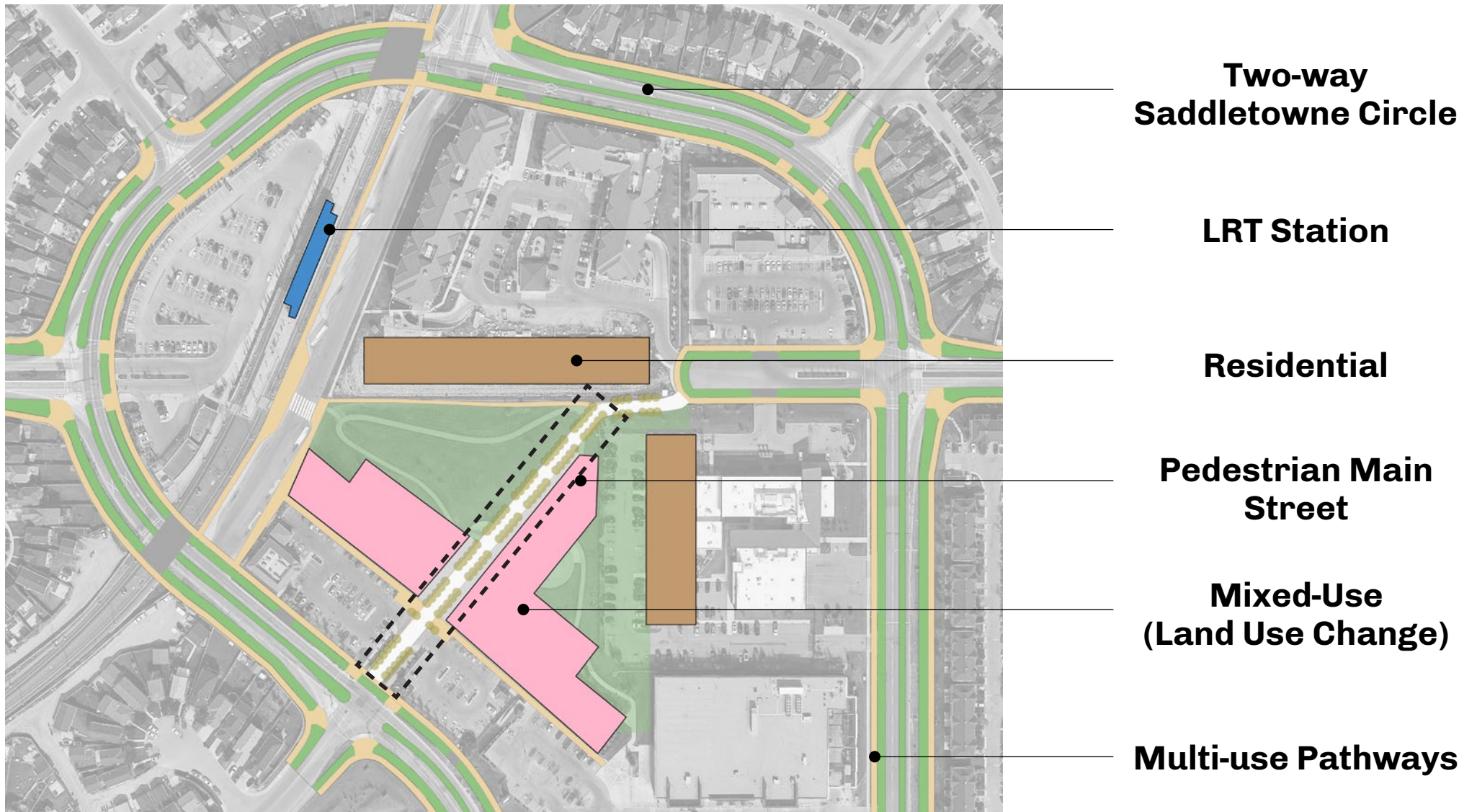
02 Branding Identity
Throughout Saddle Ridge + Taradale

SPECIAL SITE

Community Identity



01 Plaza Enhancements
Saddletowne Plaza between LRT and Police Station



02 Saddletowne Center Redesign
Redesign Saddletowne Circle for a pedestrian main street

