

Prairie Towns: process and form

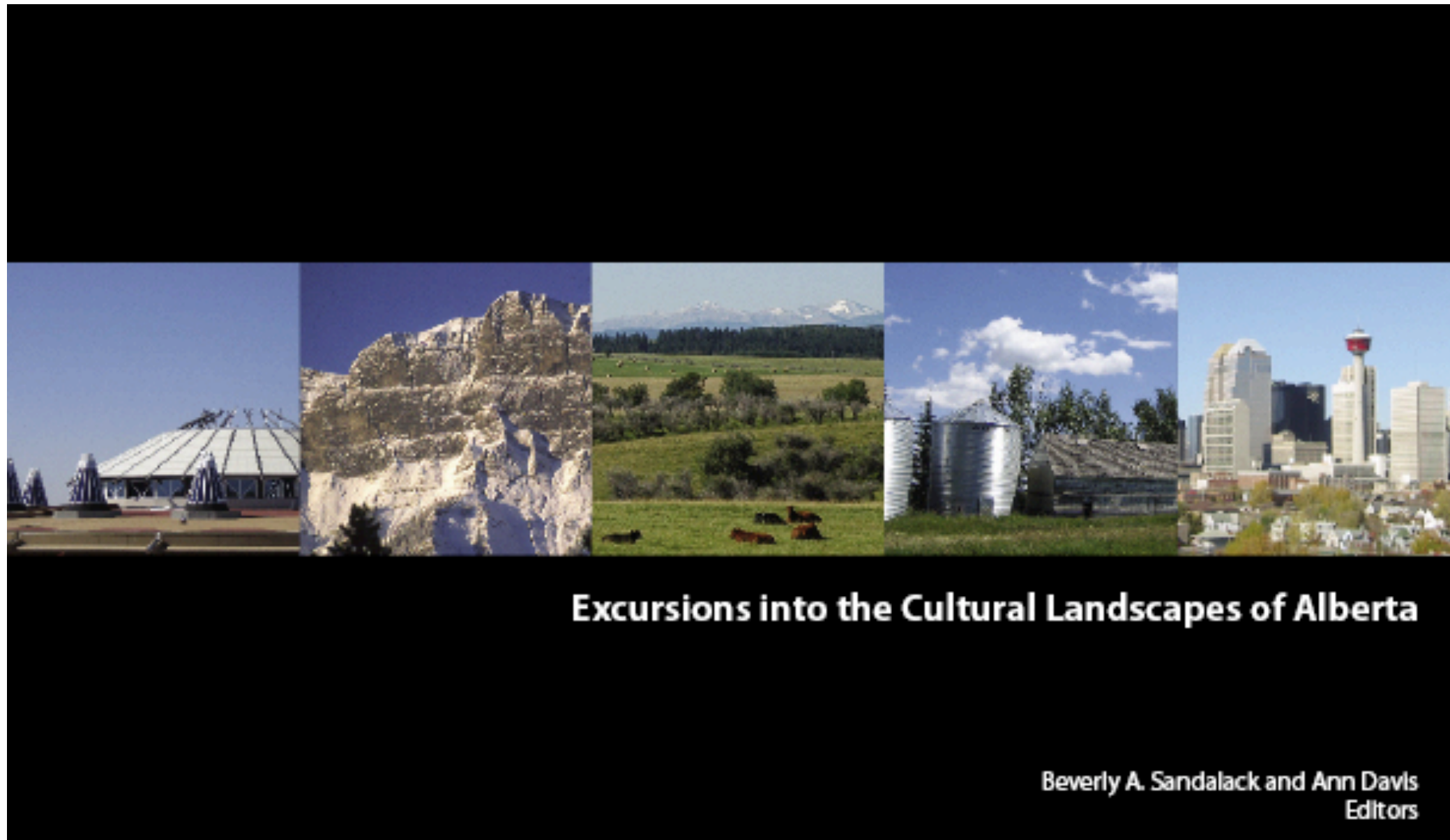
Beverly A. Sandalack PhD FCSLA MCIP
Professor, Faculty of Environmental Design
University of Calgary

Place and Replace
a joint meeting of Western Canadian Studies and the St. John's College Prairies Conference
Winnipeg, Manitoba September 2010



Sense of Place Project - 2005, Calgary

- cultural landscape is the interaction of human action and the natural landscape
- while all cultures alter the landscape, each does it in a different way
- landscapes are primarily for living and working, secondarily for viewing
- “there is no such thing as an uninteresting landscape” J.B. Jackson



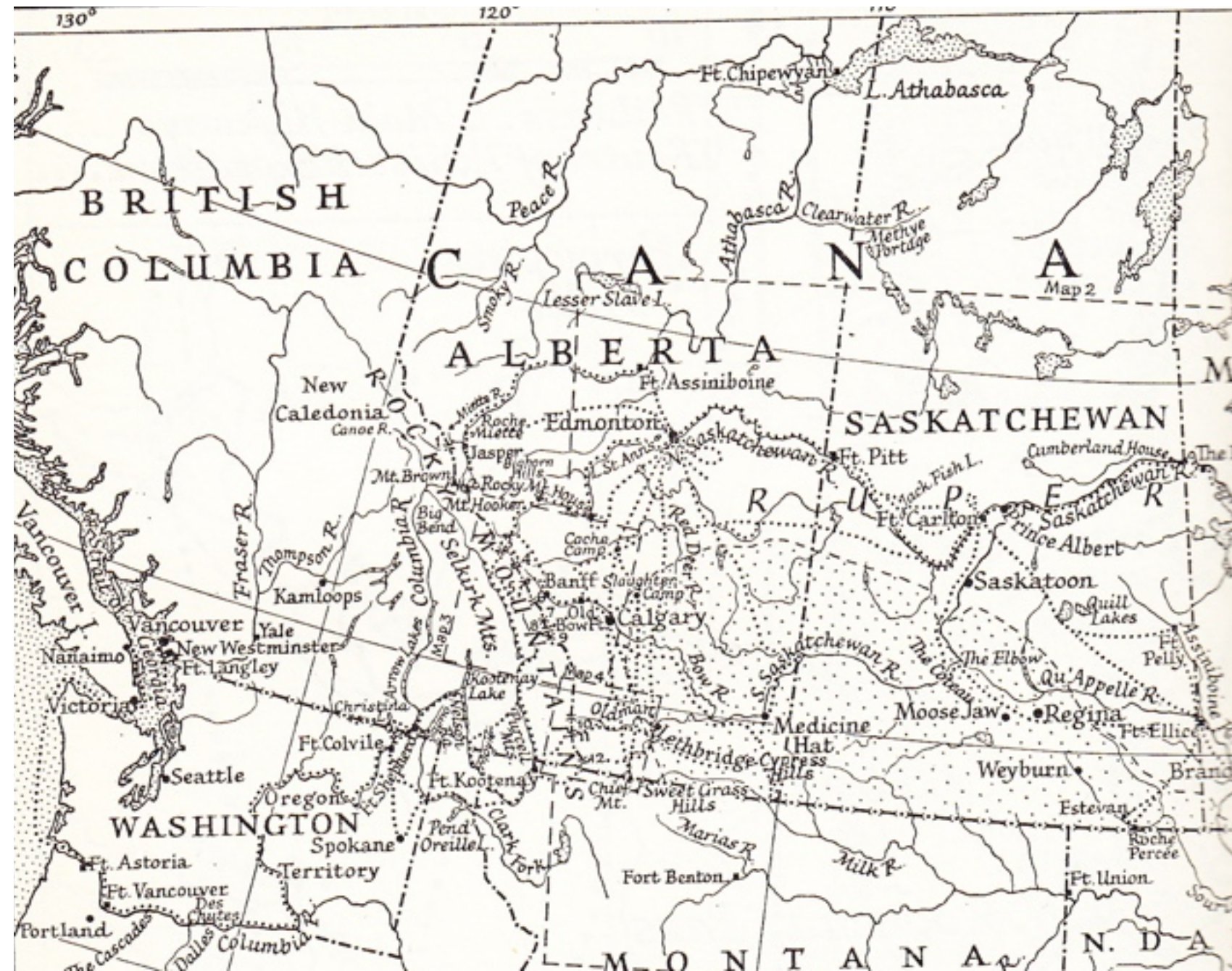


Granting of the Royal Charter By King Charles II, 1670
formation of the Hudson's Bay Company
fur trade - 2 centuries



John Palliser

From the water-colour by Mary Seavern, courtesy of Mrs. H. S. Patterson, Sr.



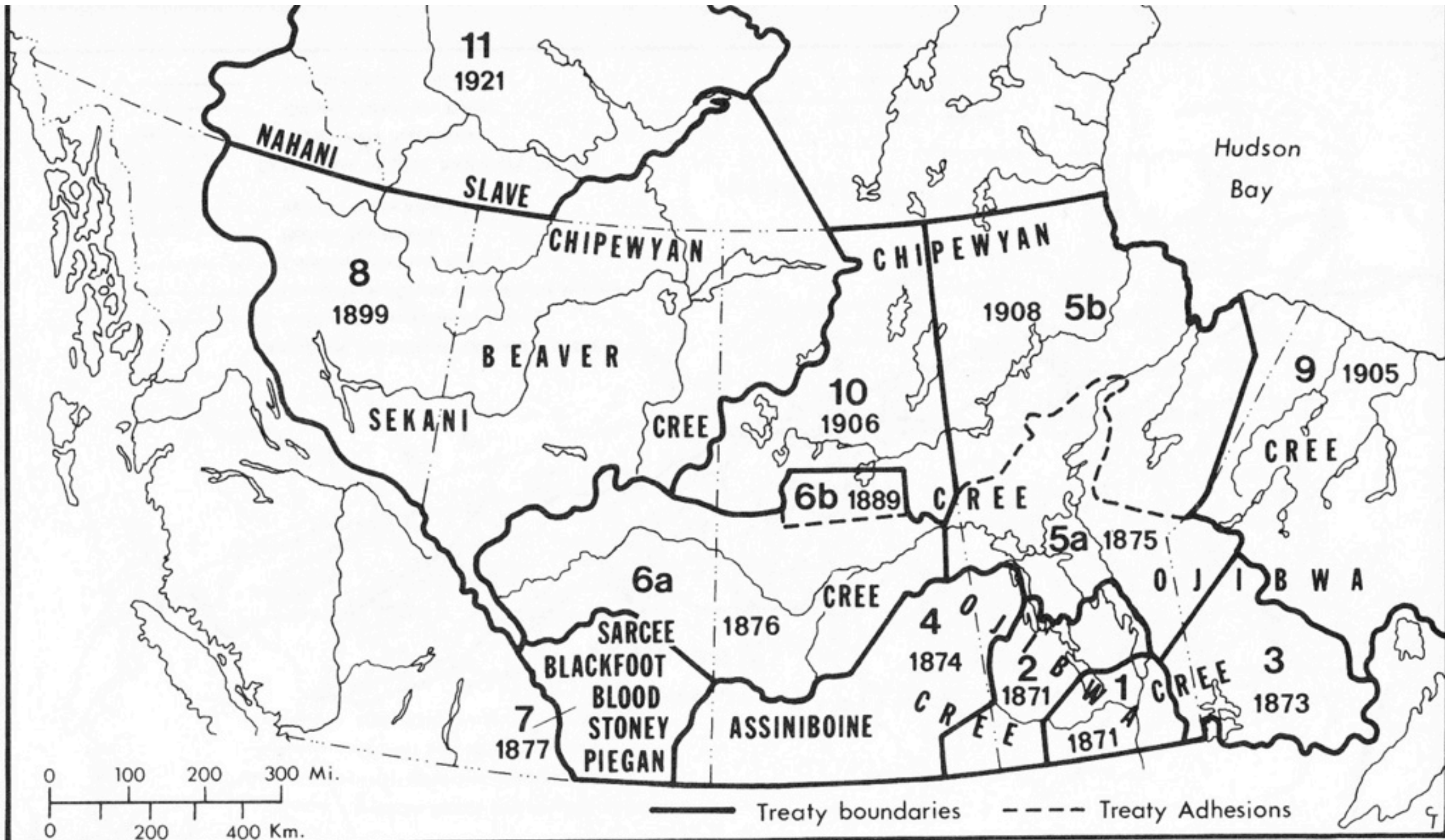
scientific expeditions commissioned by Britain and Canada
American interest in the Canadian West
Canada buys Rupert's Land from HBC for 1.5 M\$ plus land claims for HBC



drawings from Palliser expedition



group photo after 1885 troubles. Horse Child and Big Bear, left side, Poundmaker, right.
The Indian Act 1876 - protective and coercive
system of reserves
“directed social change”



THE CANADIAN PACIFIC RAILWAY.

TRAVERSING THE GREAT WHEAT REGION OF THE CANADIAN NORTHWEST

To the Rich Grazing Districts and Fertile Sections of the Eastern Base of the Rocky Mountains. Total Length More Than 2,000 Miles. The Shortest Cut to the Northwest Coast, and the Cheapest Crossing Land in the World.



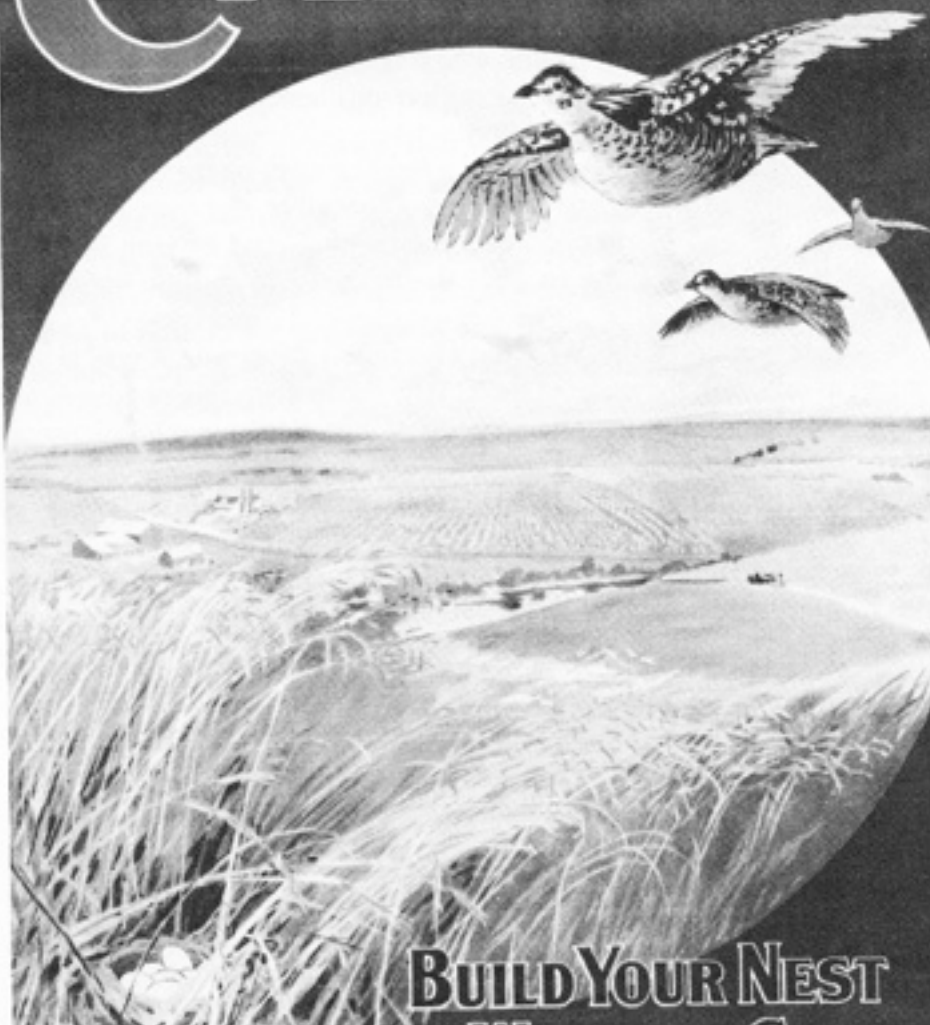
A FEW FACTS WORTHY OF CAREFUL READING ABOUT MANITOBA and THE GREAT CANADIAN NORTHWEST.

FREE HOMESTEAD	AGRICULTURE	CROPS	MAPS AND PAMPHLETS	POINTS OF INTEREST	SCENERY
...	MAPS AND PAMPHLETS MANITOBA - CANADIAN NORTHWEST SIXTEEN PAGES



THE CANADIAN PACIFIC RAILWAY is the shortest trans-continental route in America, and has a LARGEST TRACT OF TWENTY-FIVE MILLION ACRES of the FINEST AGRICULTURAL LAND in the CANADIAN NORTHWEST.

CANADA



BUILD YOUR NEST IN WESTERN CANADA

FOR INFORMATION
MAPS AND PAMPHLETS
APPLY TO —

A Canadian Government poster, no date, directed at the universal need for home. (Public Archives Canada, C 126302)

prairie

“ The geologist who surveyed southern Saskatchewan in the 1870s called it one of the most desolate and forbidding regions on earth. Yet....I look for desolation and can find none. It is a long way from characterless; ‘overpowering’ would be a better word. The drama of this landscape is in the sky, pouring with light and always moving.....Yet the sky would not be so spectacular without this earth to change and glow and darken under it.

The very scale, the hugeness of simple forms, emphasizes stability.....

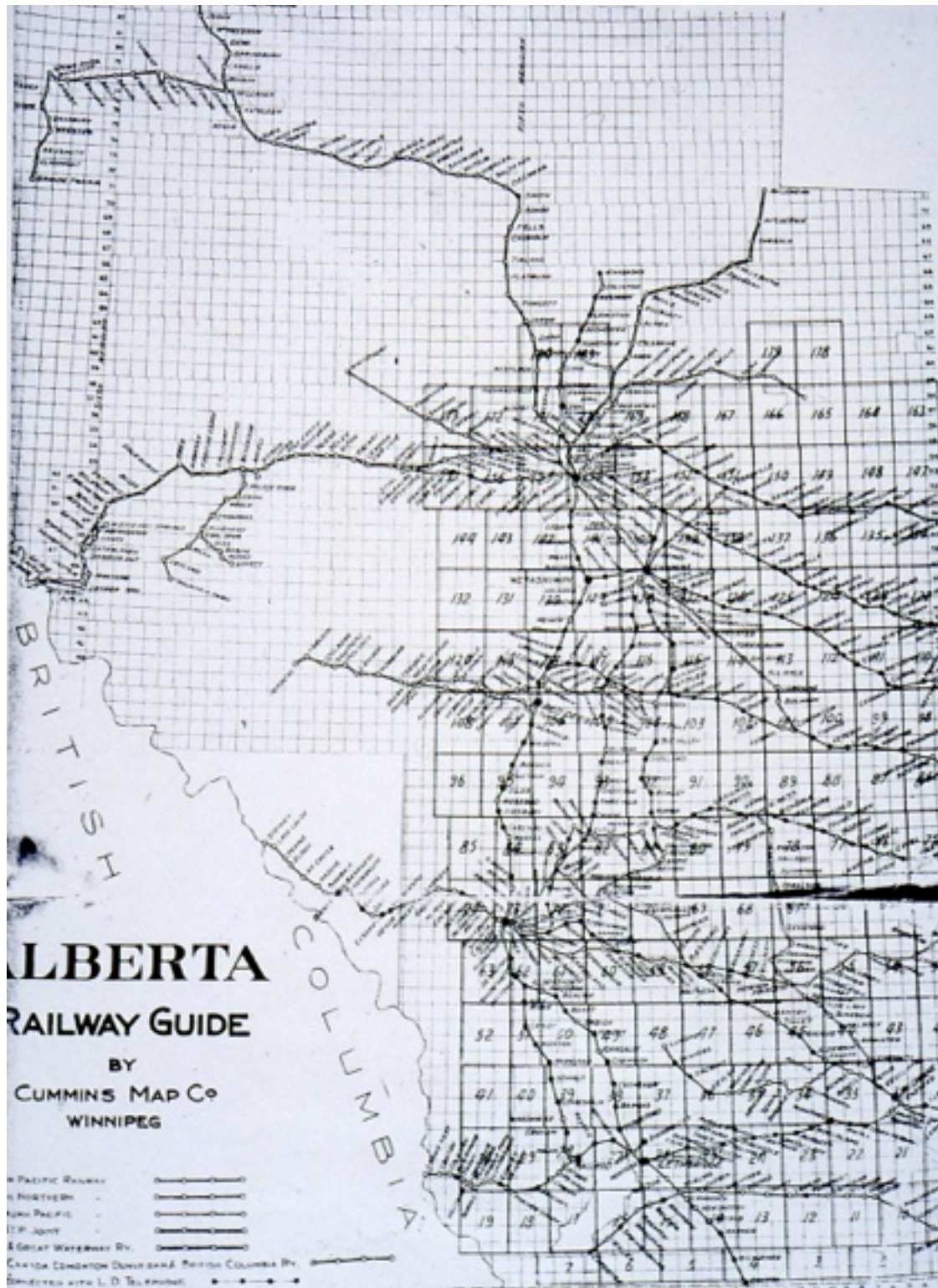
Desolate? Forbidding? There was never a country that in its good moments was more beautiful. Even in drought or dust storm or blizzard it is the reverse of monotonous, once you have submitted to it with all the senses. ”

Wallace E. Stegner, from *Wolf Willow* (1962) p. 6-8.



.1 establishment - railway

Transportation infrastructure has had the biggest effect on settlement patterns and form



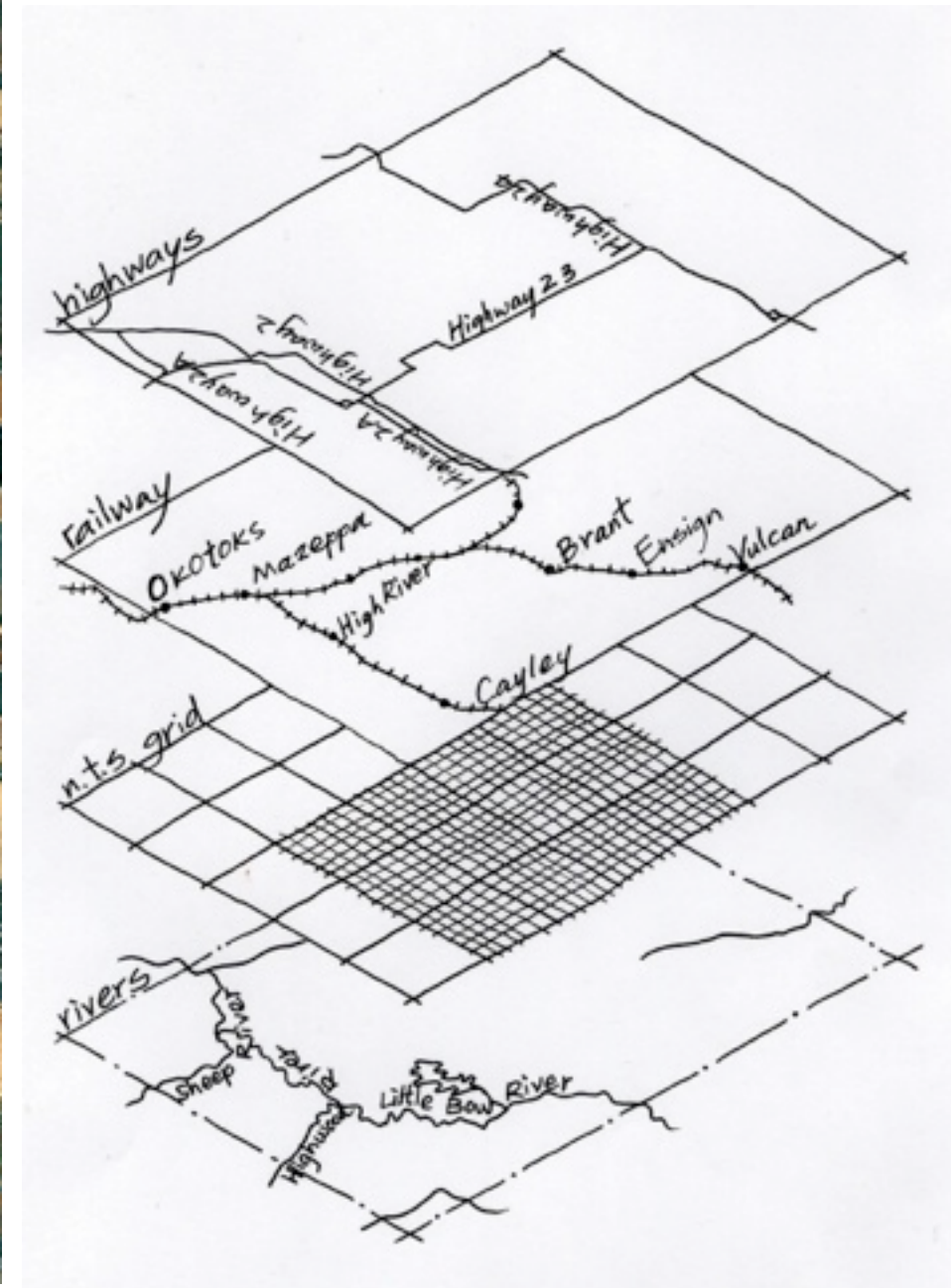
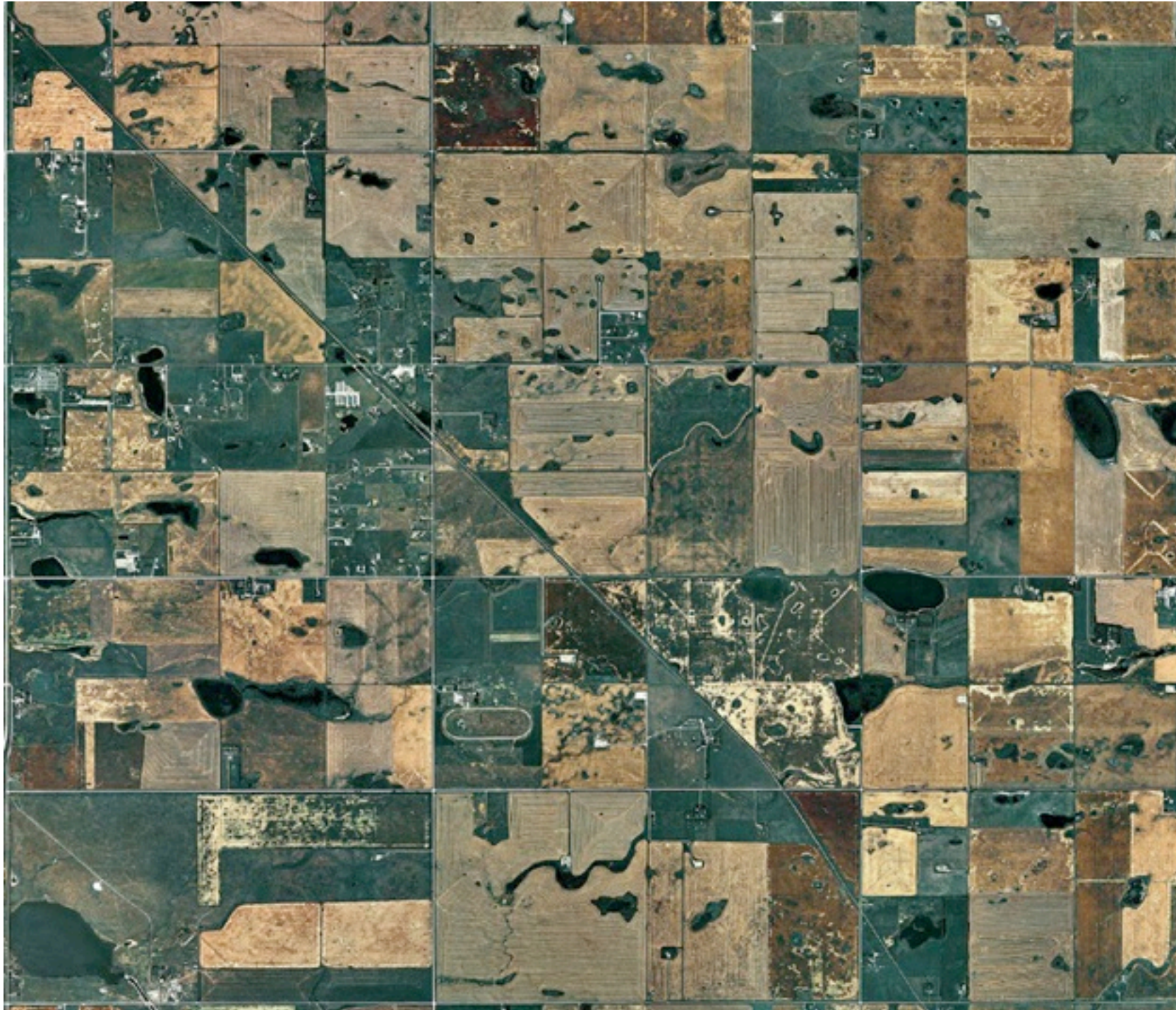
Alberta rail lines



Saskatchewan rail lines

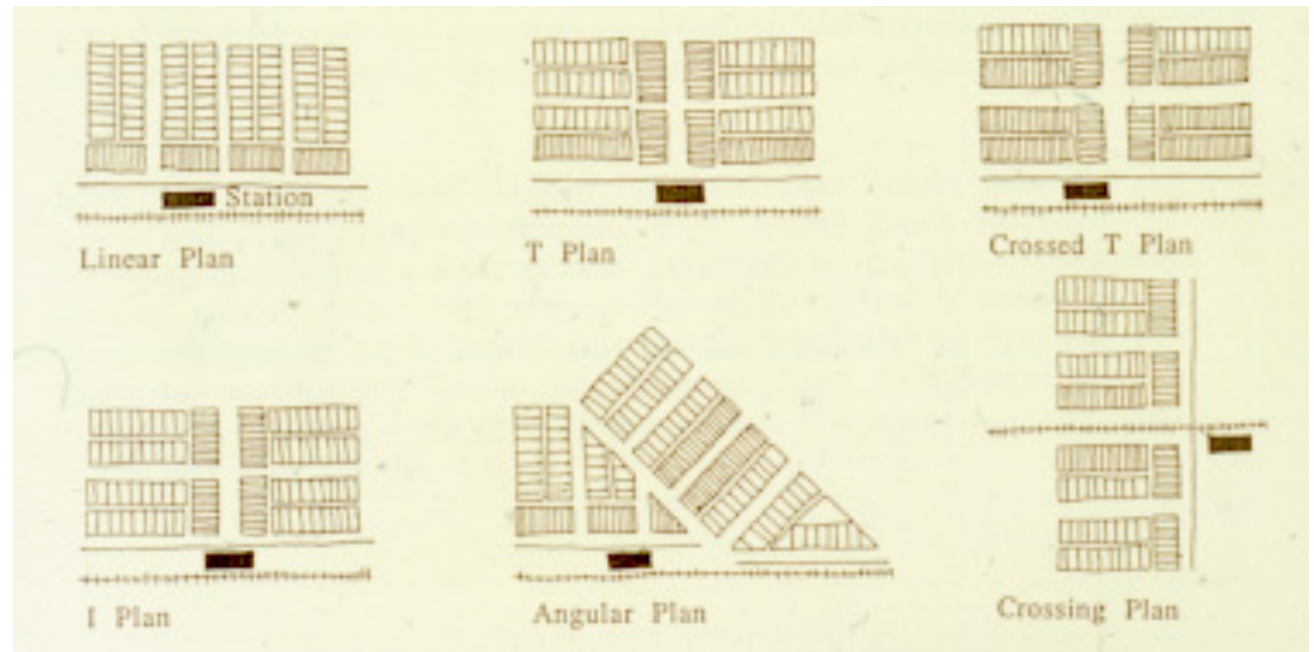
Stabler, J., 1992

prairie



Sandalack, 1998

.1 establishment



Sandalack, 1998, based on Holtz 1987 typology



Drinkwater, Saskatchewan, postcard, nd,na



Olds, Alberta (Glenbow Archives, PA-3689-632)

.1 establishment

experience: inside-out



Main Street has always been the social heart of Canada, the place where people meet, greet, and celebrate, as they do here at the 1914 Dominion Day parade in Vulcan, Alberta.

Holdsworth (1985) Reviving Mainstreet

.1 establishment



.1 establishment

legibility and identity



.1 establishment

social and economic role of towns





Prairie Towns: process and form
Beverly A. Sandalack

.2 highway

(Transportation infrastructure has had the biggest effect on settlement patterns and form)



.2 consolidation and expansion.....or collapse



Main Street
special issue

Published April 15, 1983 for
May-June 1983, \$3.00

CANADIAN Heritage

The Heritage Canada Foundation Magazine

CAPITOL

THE FALL AND RISE OF MAIN STREETS

*The best show
in town*



Figure 1. Main Street before revitalization



Figure 2. Main Street renewed

Prairie Towns: process and form
Beverly A. Sandalack



Fort McLeod, Alberta



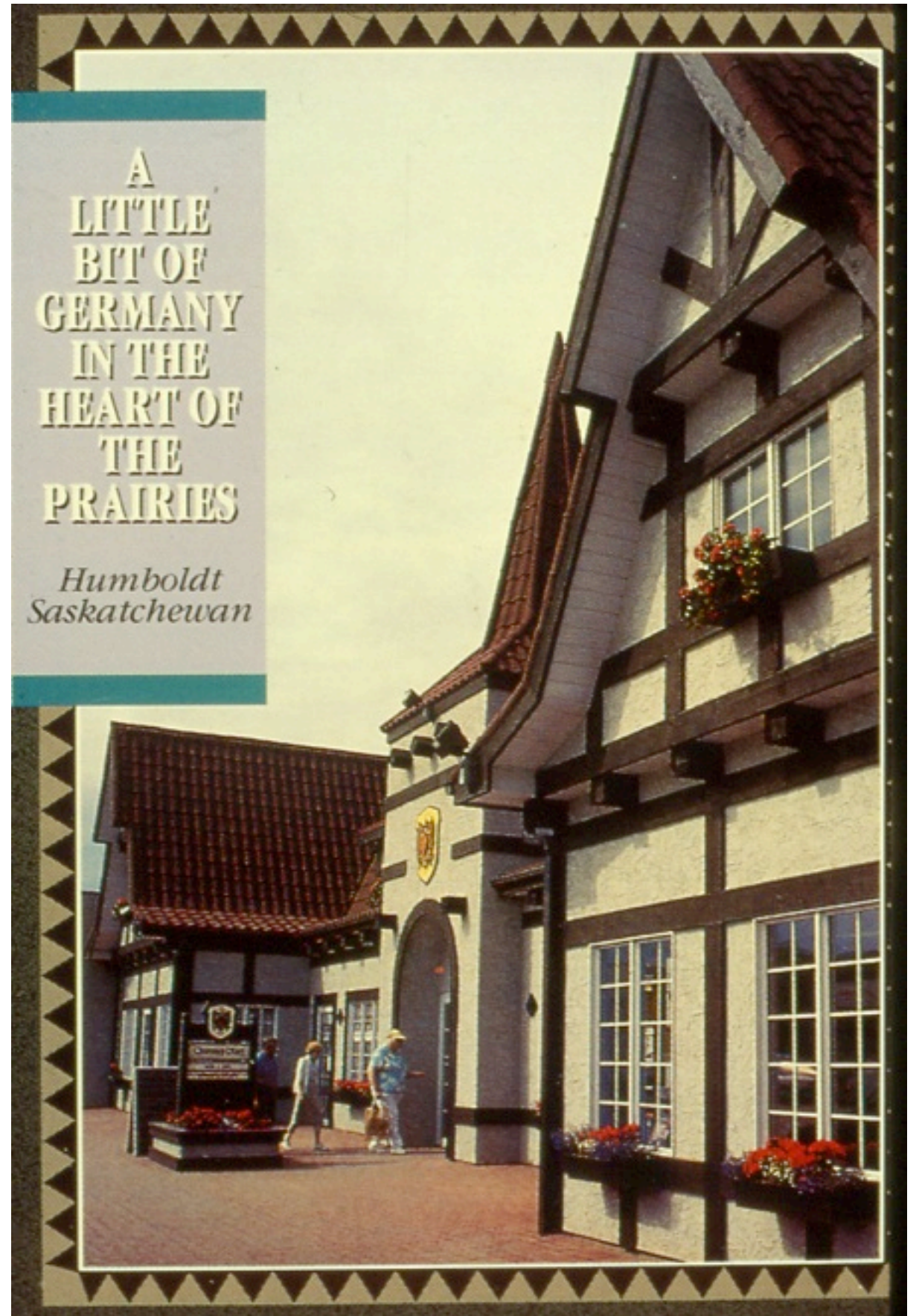
Vulcan, Alberta



Battleford, Alberta

A
LITTLE
BIT OF
GERMANY
IN THE
HEART OF
THE
PRAIRIES

*Humboldt
Saskatchewan*





Great things are happening in Altona!

Altona may look like a typical prairie town from the outside, but look more closely and you will see that great things are happening in Altona!

At one end of town is CSP Foods, one of Canada's largest canola processing plants. On the east edge you will find DW Friesen, one of Canada's largest most impressive book manufacturing companies. At the centre of town is CFAM, a major Southern Manitoba radio station and a shopping mall with over 30 stores.

Altona has a large industrial park with easy access via road, rail or air. Located only 70 miles south of Winnipeg and 7 miles from the U.S. border, Altona is the heart of the Pembina Valley. Join the excitement and make the move to where great things really are happening.

For further information please contact:
 Altona and District Chamber of Commerce
 Economic Development Dept.
 Box 219 Altona, Manitoba R0G 0B0

ALTONA AND DISTRICT CHAMBER OF COMMERCE

LOT SALE

25' X 120' LOTS

\$25.00 EACH

IN GROUPS OF TWO OR MORE LOTS PER PURCHASE.

Some restrictions apply.



For that retirement or investment in the future the Village of Empress has a lot to offer you...

Village of Empress

OFFERS:

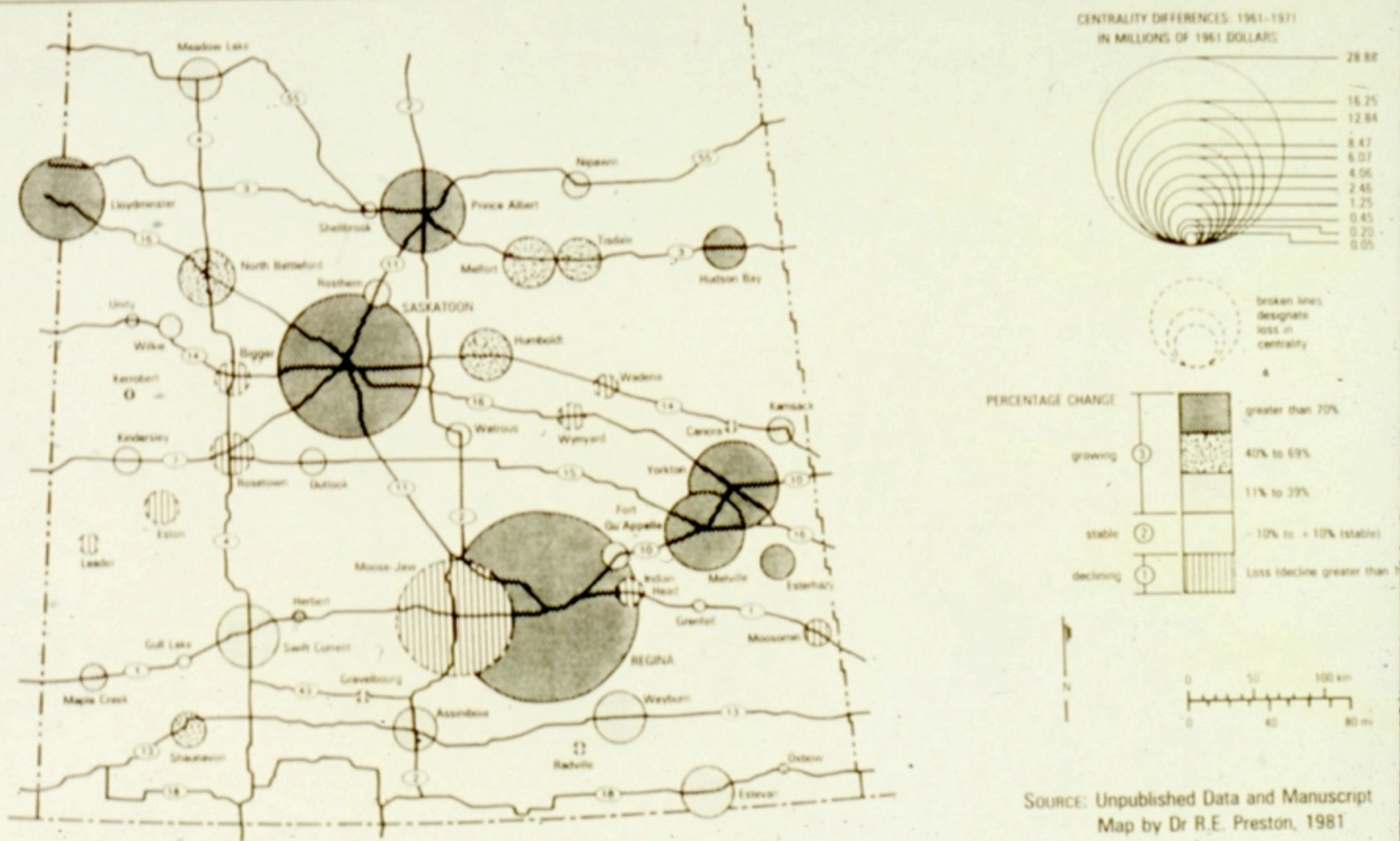
- + Hospital
- + 3 hour drive to Calgary
- + Schools
- + 1 hour to Medicine Hat
- + Close to Hwy 41



For more information contact:

Village Office (403) 565-3938 afternoons, Fax (403) 565-3890

Figure 7.9
Centrality Differences for Incorporated Centres, 1961-1971, Saskatchewan



Stabler, 1992



Prairie Towns: process and form
Beverly A. Sandalack

issues - legibility and identity



Vulcan, Alberta

1994

issues - legibility and identity



Vulcan, Alberta

1994



2006

issues - legibility and structure



issues - legibility and structure

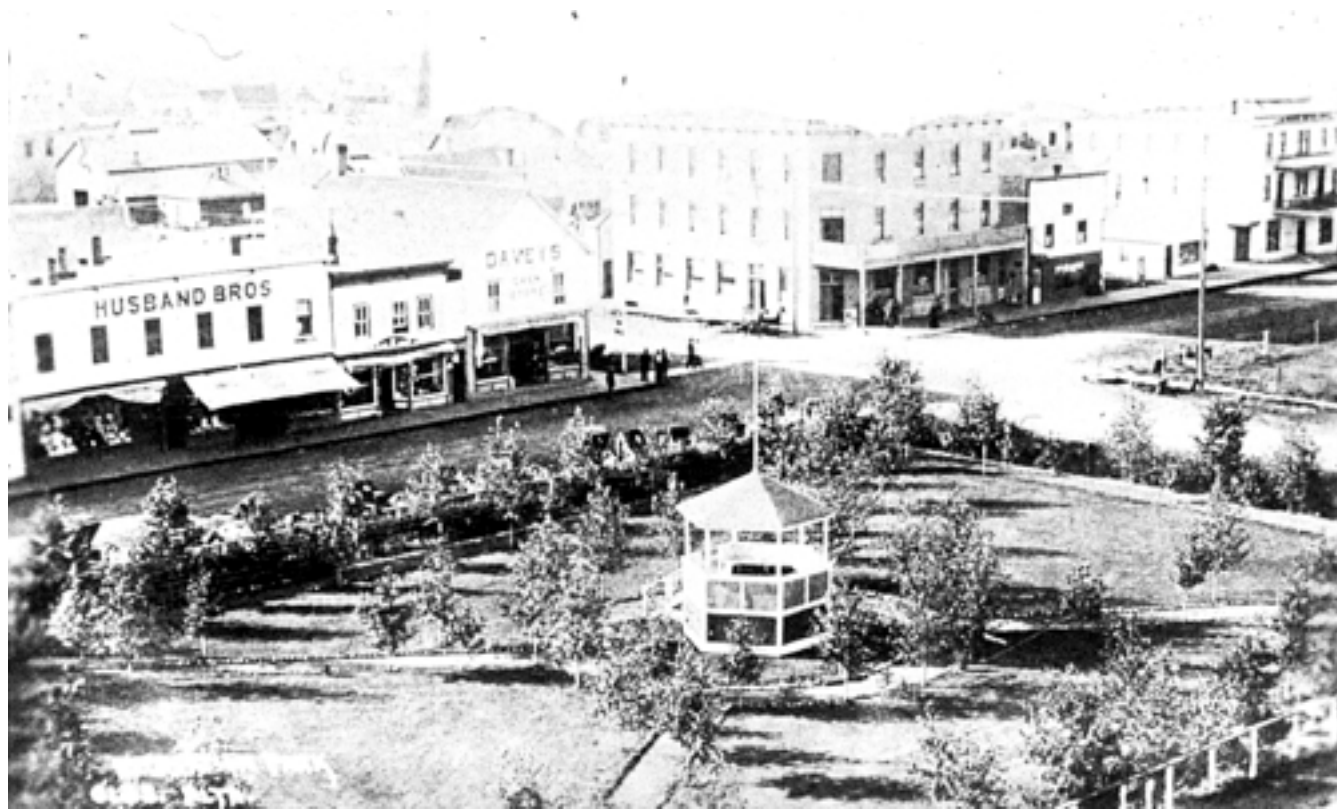


Stavely, Alberta



Dysart, Saskatchewan

issues - infrastructure and public realm



Virden, Manitoba



Olds, Alberta

issues - infrastructure and public realm lost space?



Outlook, Saskatchewan



High River, Alberta

issues - quality of the public realm, block structure and streets

High River, Alberta
from Sandalack, Nicolai and the Urban
Lab (2003) High River Open Space Plan





Olds, Alberta - various eras in residential street standards
Photos A. Nicolai 1994



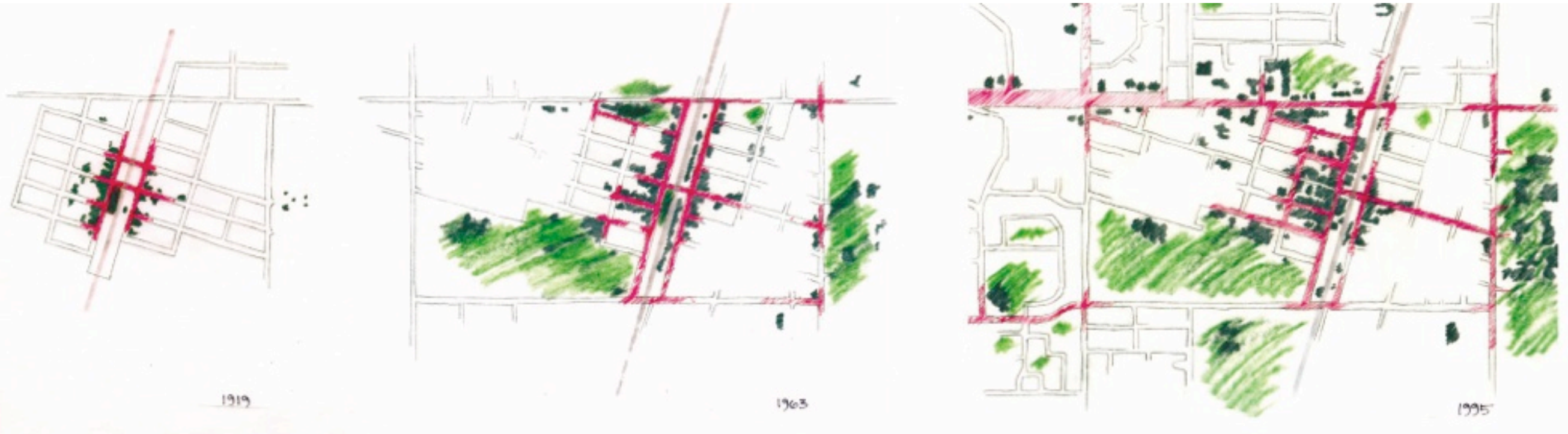
Vulcan, Alberta
Old and new street/sidewalk standards
Photos B. Sandalack 1993

Prairie Towns: process and form
Beverly A. Sandalack



outside of Pincher Creek, Alberta

issues - inside-out experience is now outside-in



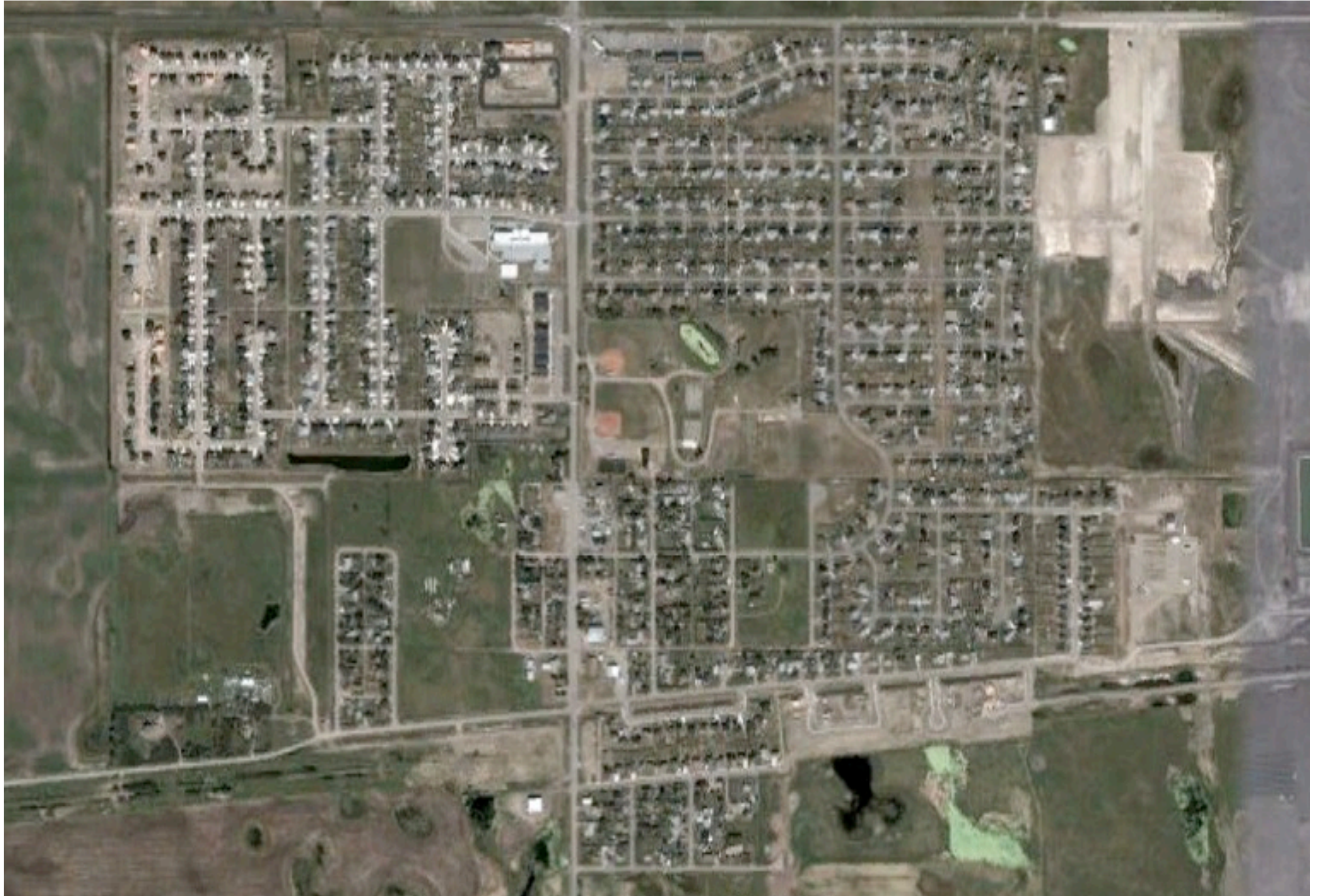
Olds, Alberta - impressionistic drawings
Sandalack, 1998

issues - town entries are missed opportunities



issues - authenticity - which history?







issues - authenticity - which history?



issues - authenticity - which history?



issues - authenticity - which history?



issues - authenticity - which history?



the new mixed use



Langdon - residential behind commercial

the new mixed use



High River - residential
above commercial

.3 the information highway and the global economy



northeast of Calgary

2000



2010



Prairie Towns: process and form
Beverly A. Sandalack

prairie

Wallace E. Stegner, from *Wolf Willow* (1962)

“ It is a long way from characterless; ‘overpowering’ would be a better word....the very scale, the hugeness of simple forms, emphasizes stability.....it is the reverse of monotonous, once you have submitted to it with all the senses. ”

Rex Murphy, from CSLA address (1997)

“ As Canadians, we have yet to live up to our landscape. ”



change and continuity



Prairie Towns: process and form - where to next?



Beverly A. Sandalack



sandalack@ucalgary.ca
www.ucalgary.ca/urbanlab/



bev@sandalackassoc.ca
<http://www.sandalackassoc.ca>

Place and Replace
a joint meeting of Western Canadian Studies and the St. John's College Prairies Conference
Winnipeg, Manitoba September 2010