

Marda Loop Concept Plan

Don McArthur Rob Nordrum Lauren Whitney



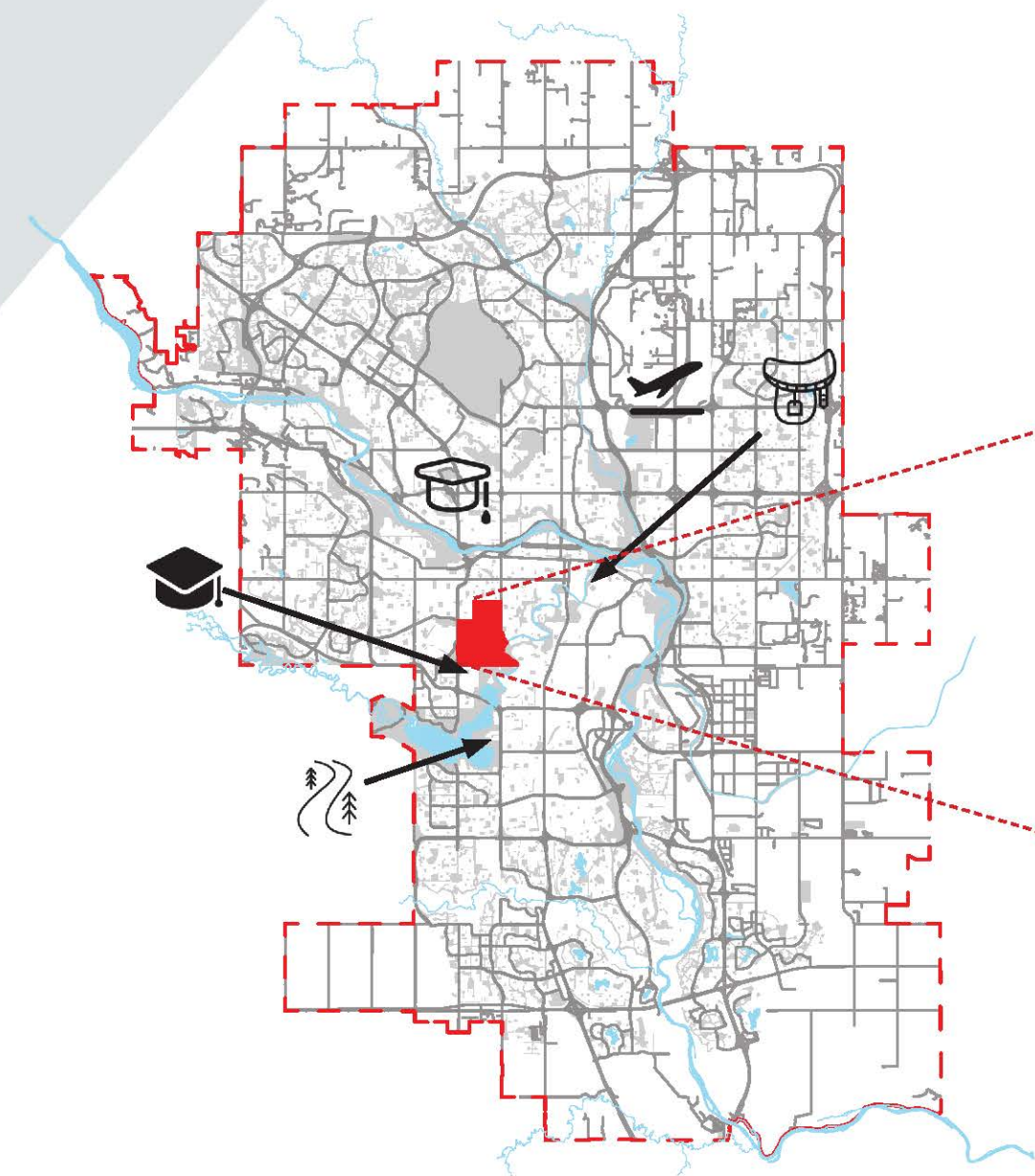
Vision: Develop policies and designs which foster well **connected, vibrant** and, **inclusive** social networks which respect **nature** and enhance the community.

Guiding Principles **Connectivity** **Vibrancy** **Inclusivity** **Environment**

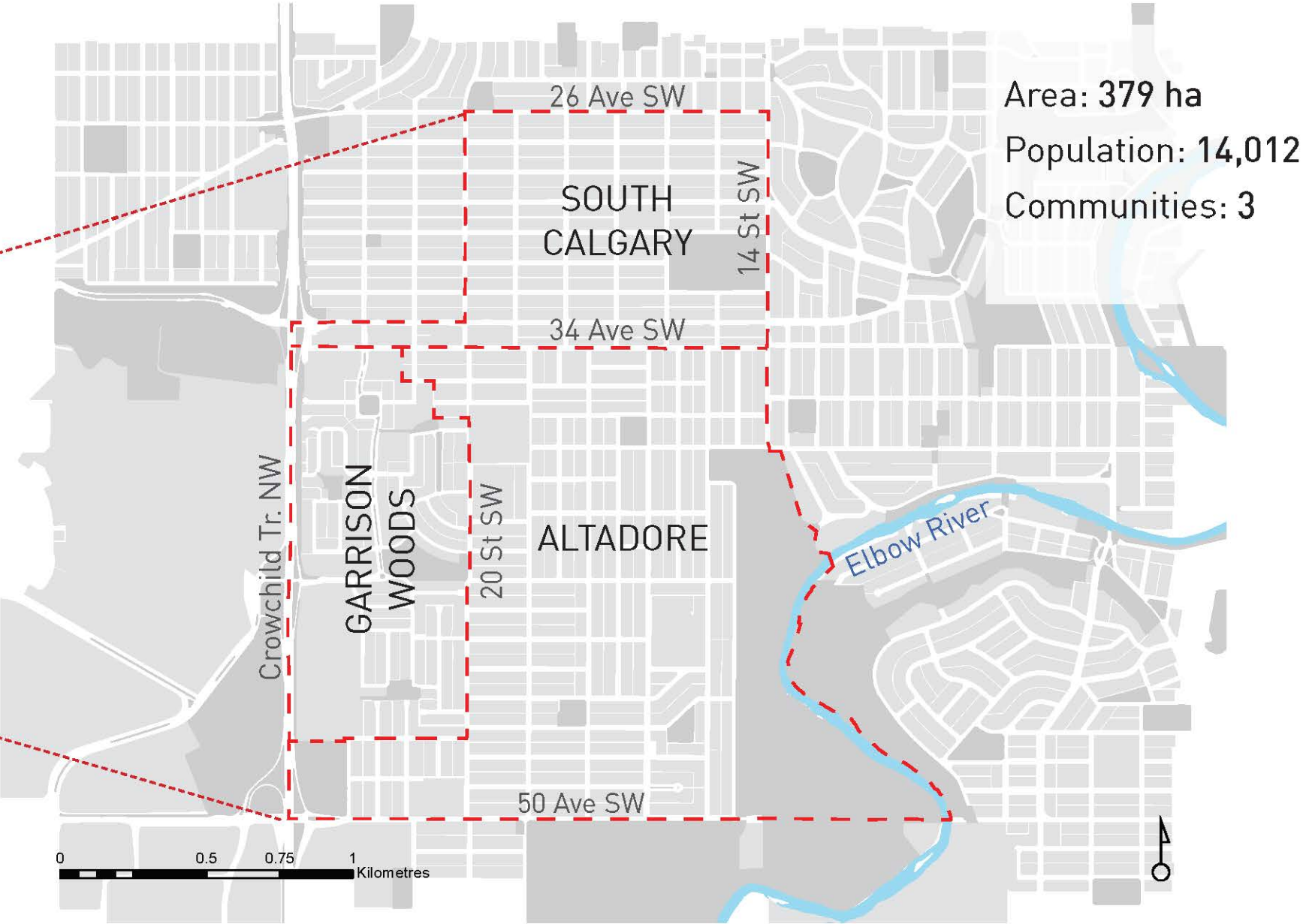
Travel time to Destinations

- YYC Airport**
Car: 33 min
Public Transport: 1h 19 min
- Downtown**
Car: 14 min
Public Transport: 33 min
- University of Calgary**
Car: 16 min
Public Transport: 44 min
- Mount Royal University**
Car: 9 min
Public Transport: 23 min
- Saddledome**
Car: 14 min
Public Transport: 41 min
- Glenmore Reservoir**
Car: 21 min
Public Transport: 41 min

Site Context

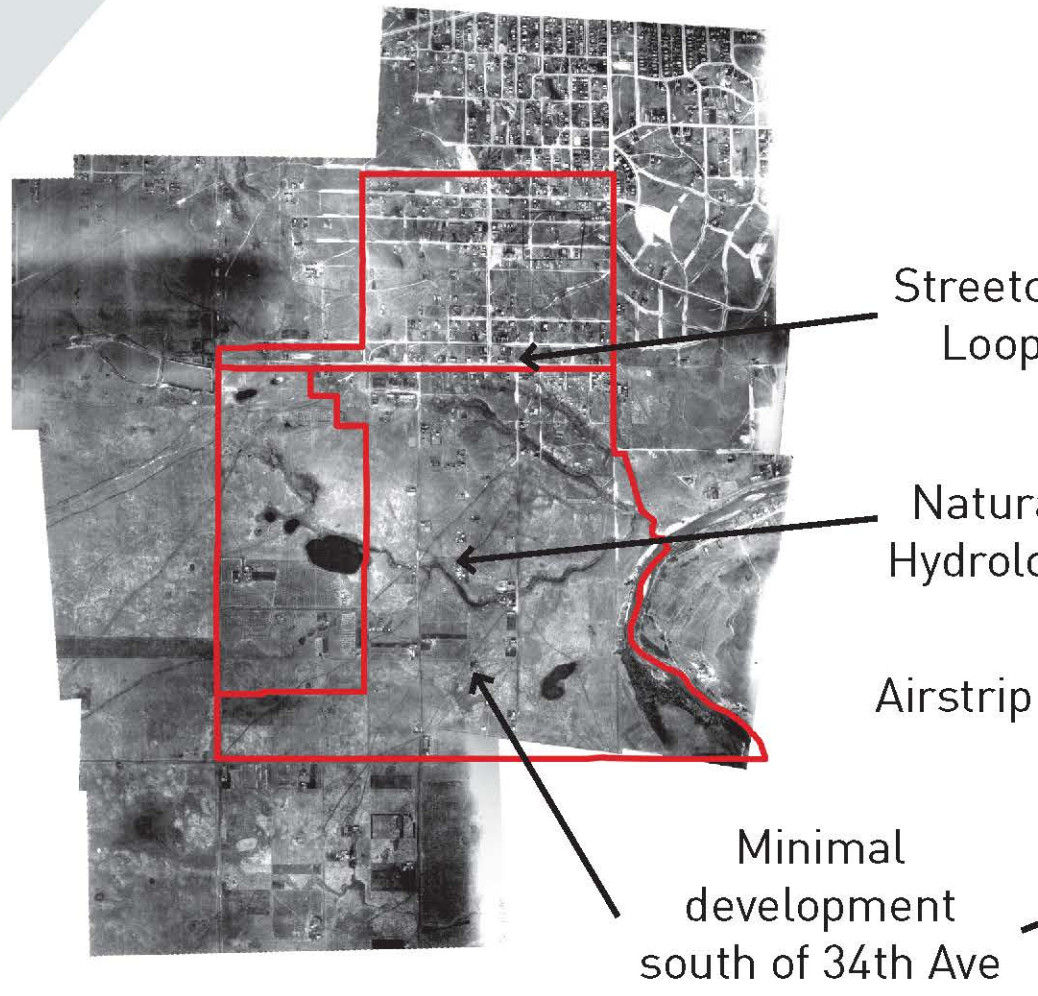


Site Boundaries

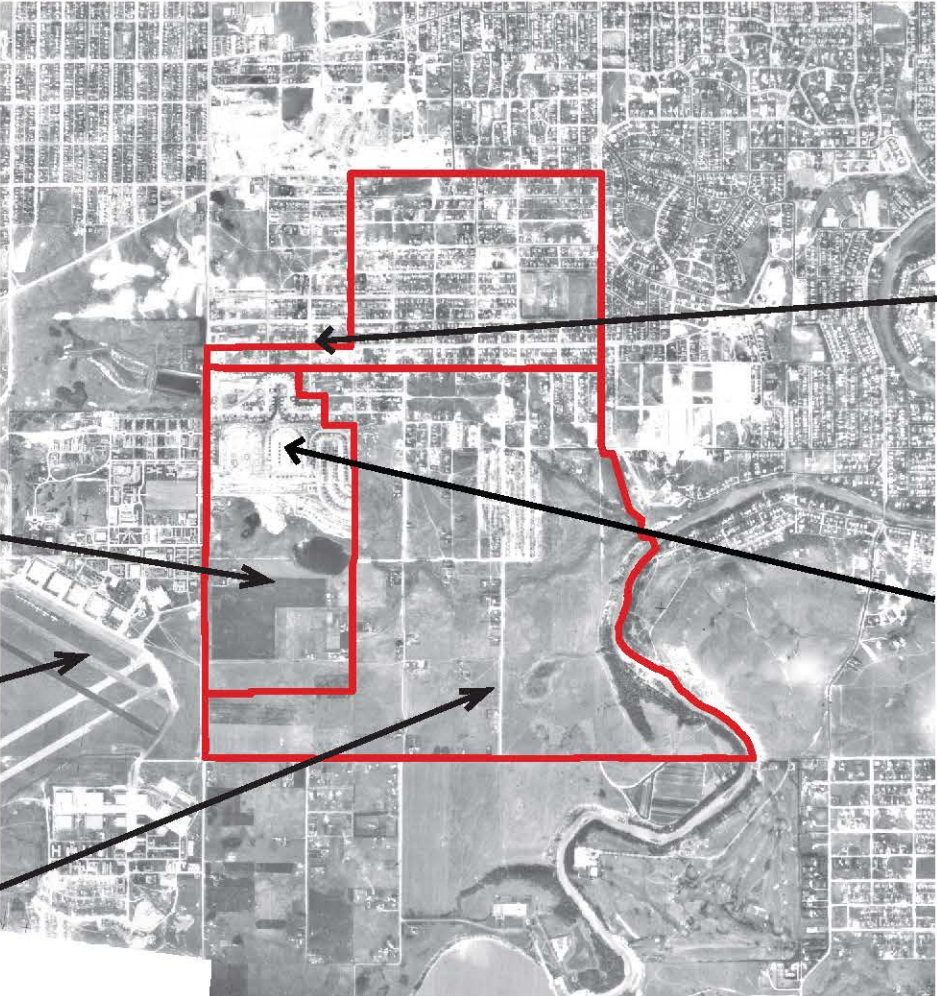


Development History

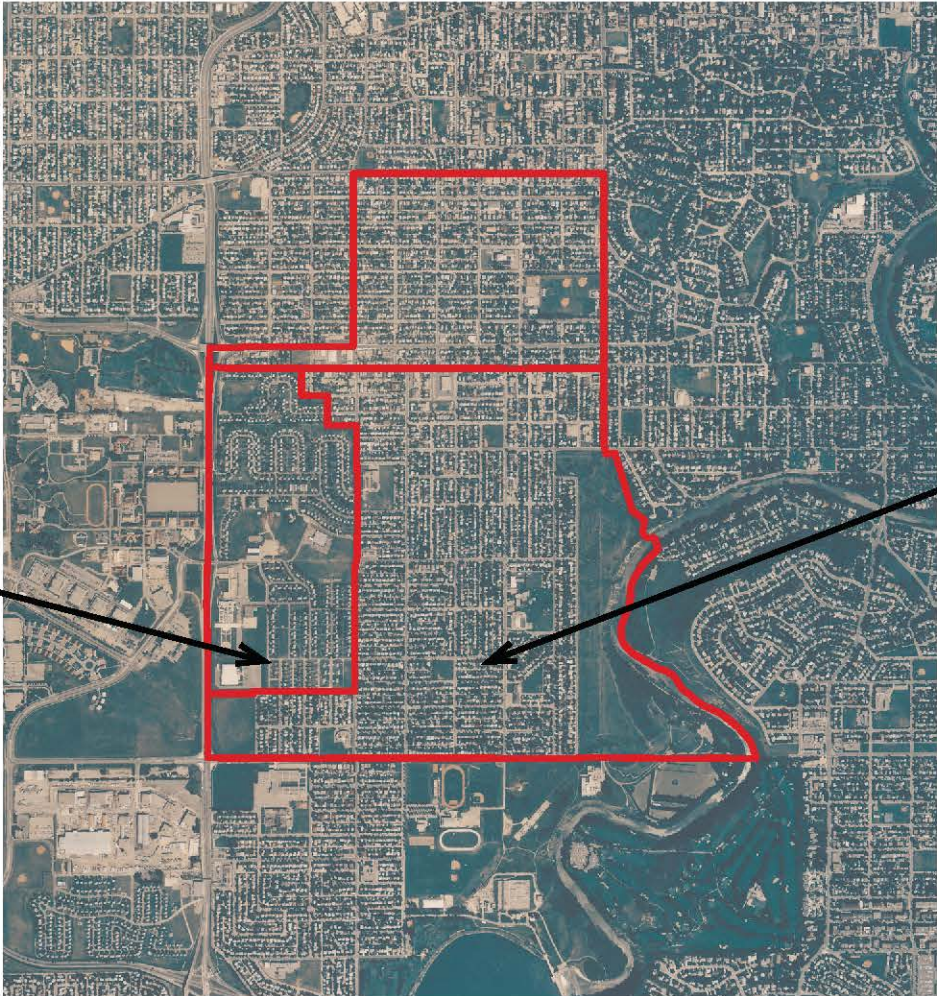
1924



1950



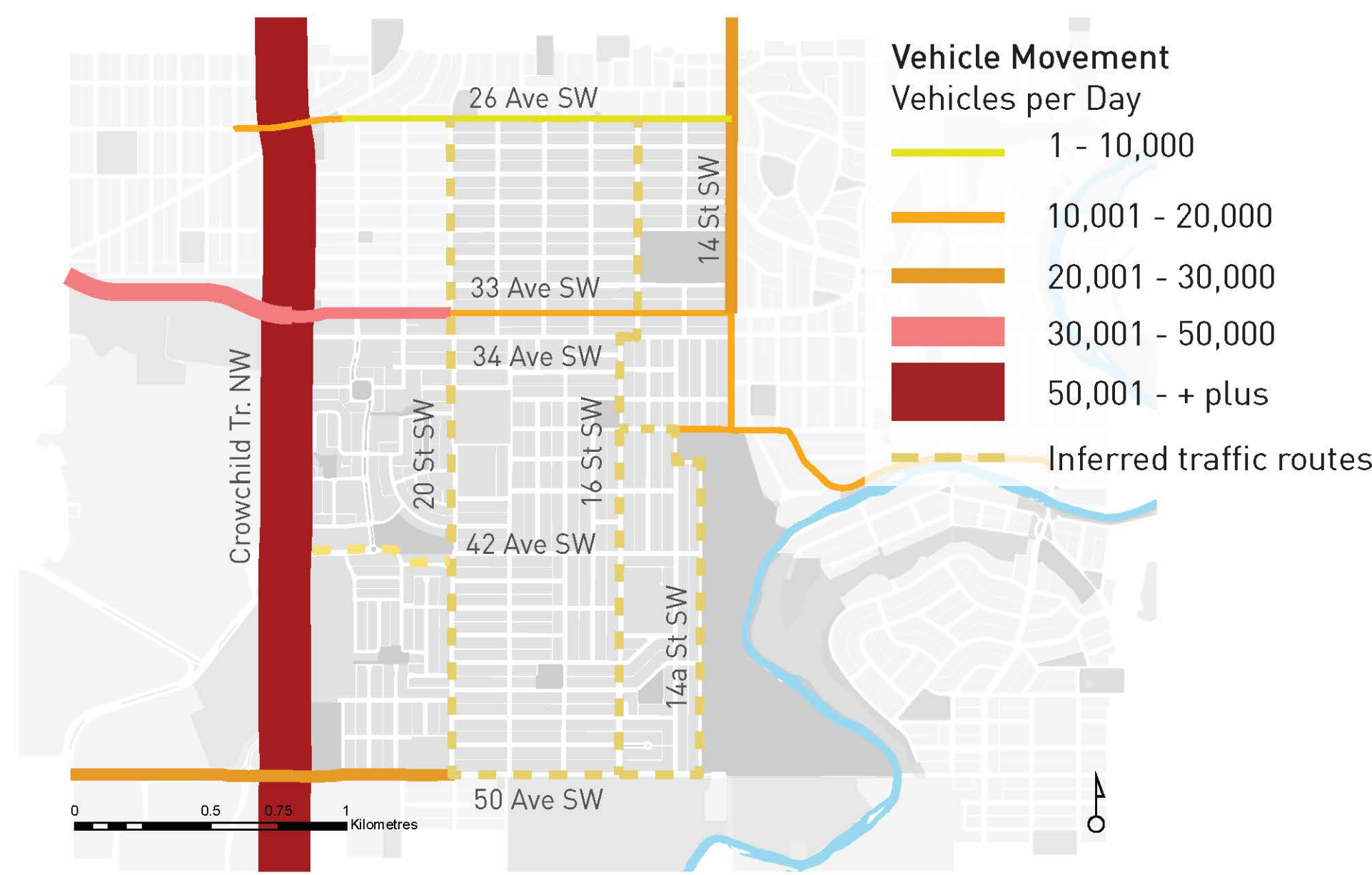
1993



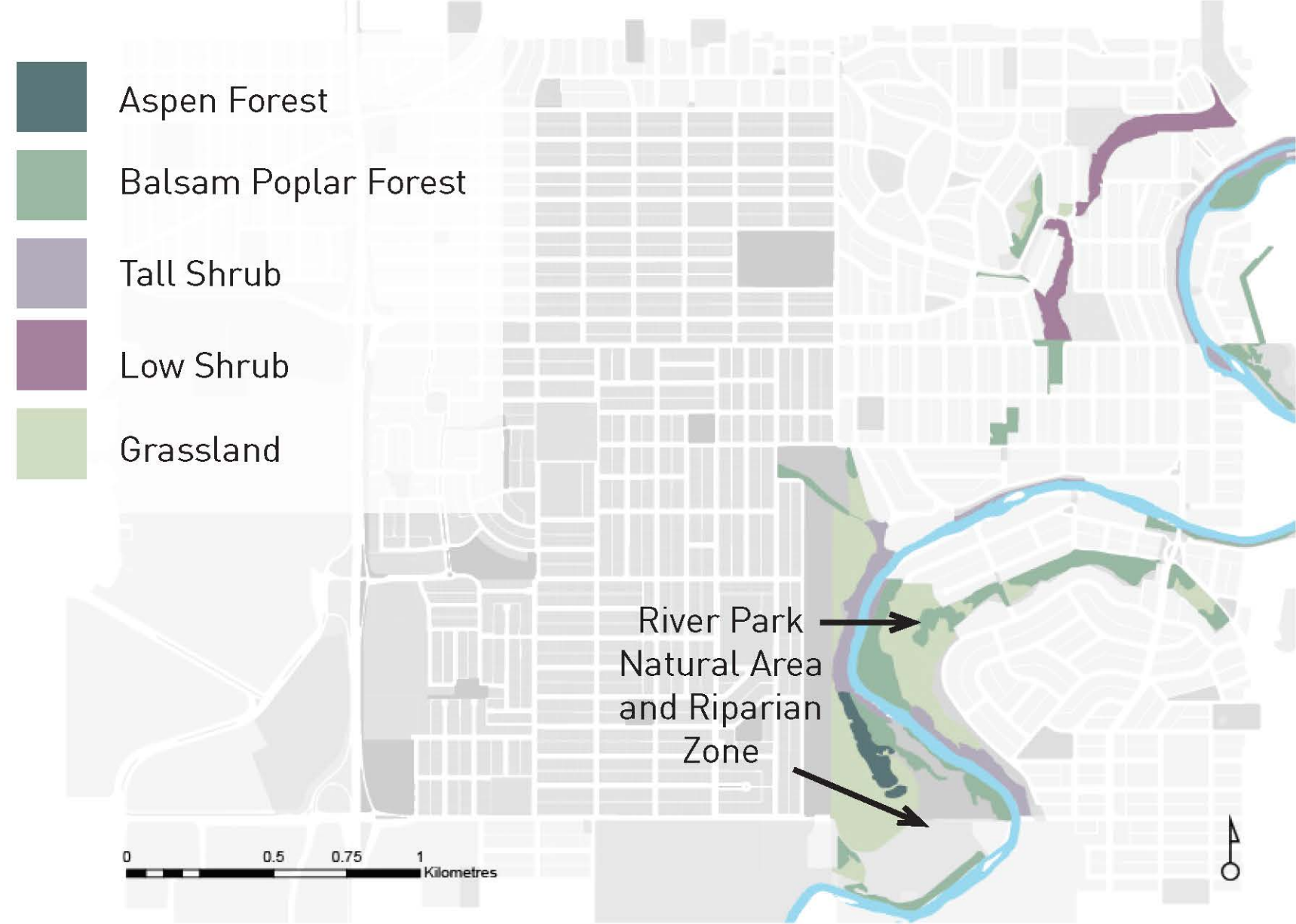
2017



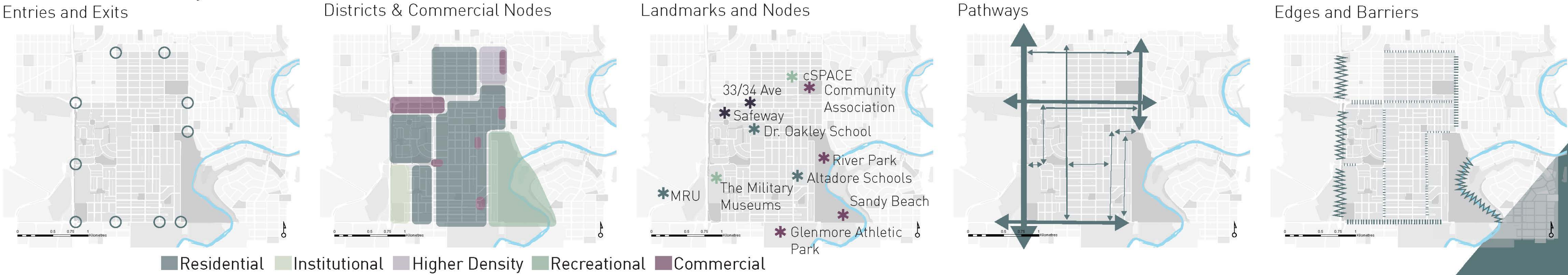
Traffic Flows



Natural & Sensitive Areas



Functional Analysis



Mobility

Improve conditions of transportation networks to ensure optimal flow and safety for all modes of transportation within the community, and connections to the city at large.

Proposed Additions to Bike Network



Bike Lane Typologies



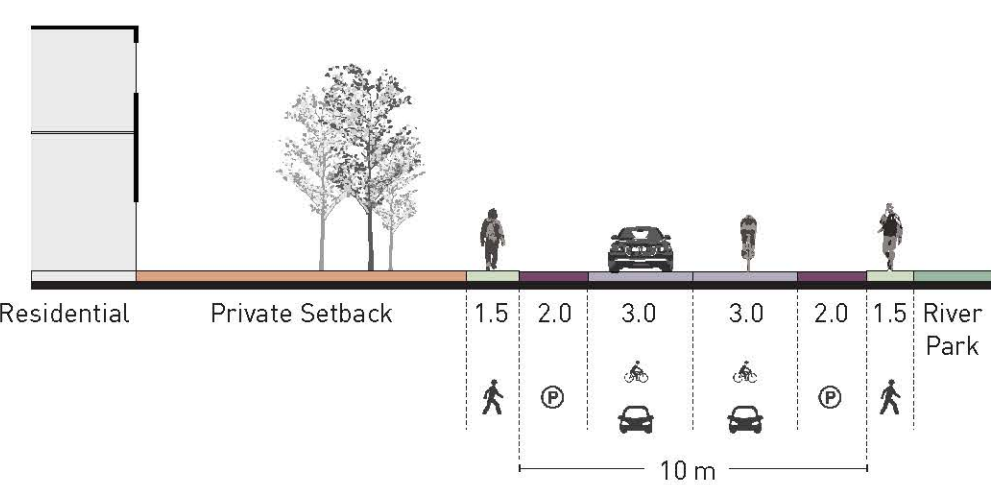
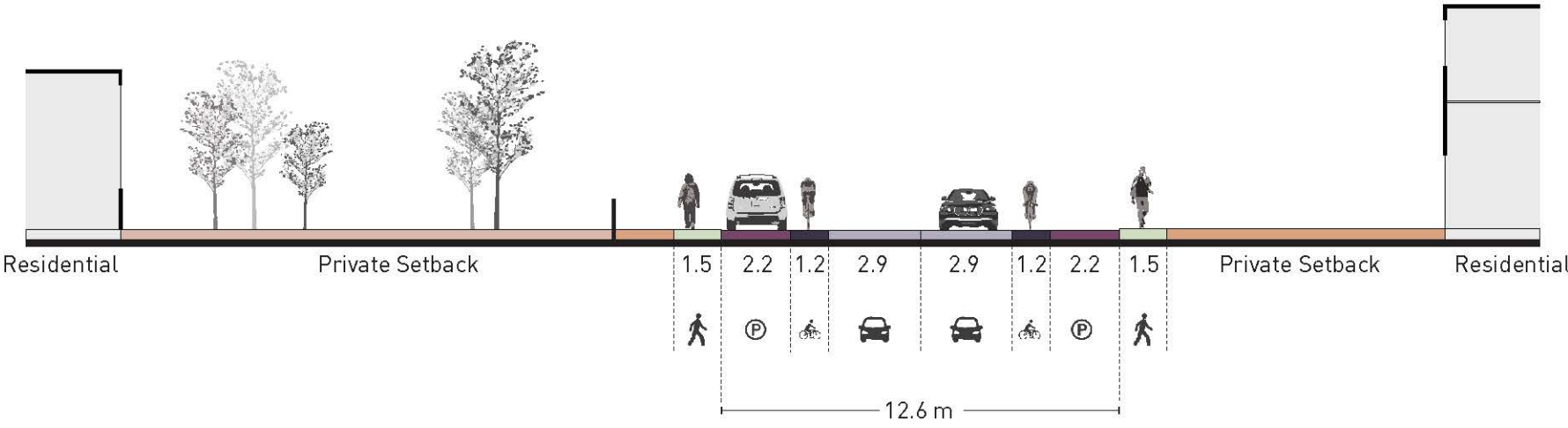
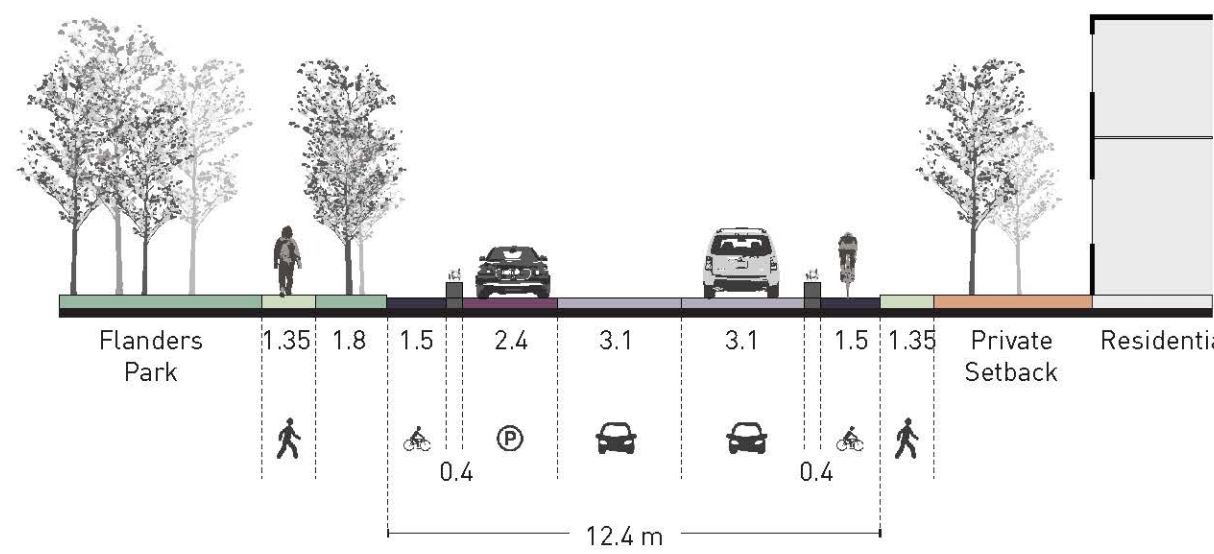
20 Street SW - Separated



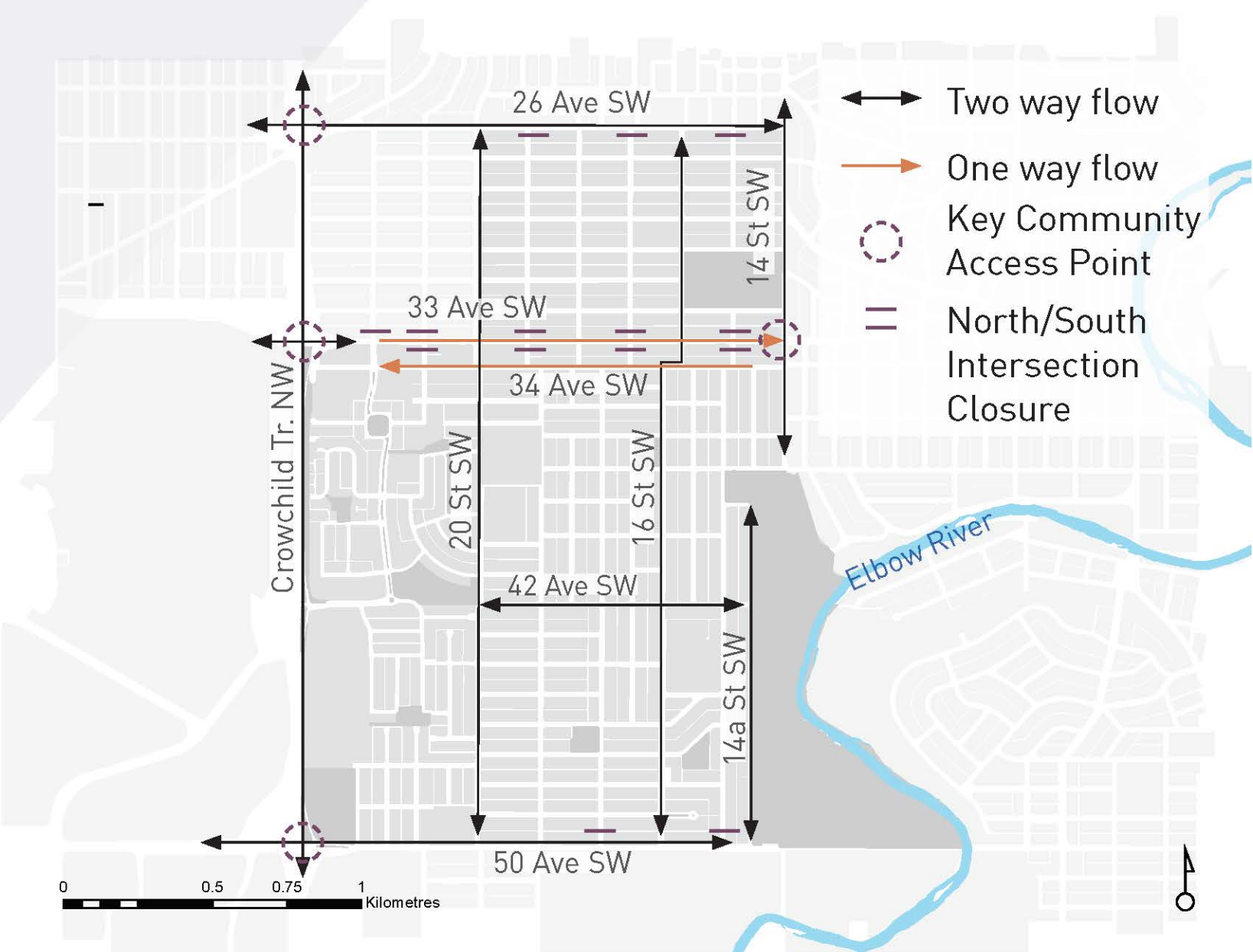
16 Street SW - Designated



14a Street SW - Shared



Proposed Traffic Flow



Lane Direction Changes to 33 & 34 Ave



33 Ave Intersection Strategy



One-way Precedents



De Maisonnette
Cycle Path, Montreal



Rue Saint Jean,
Quebec City

Street Closure Precedents

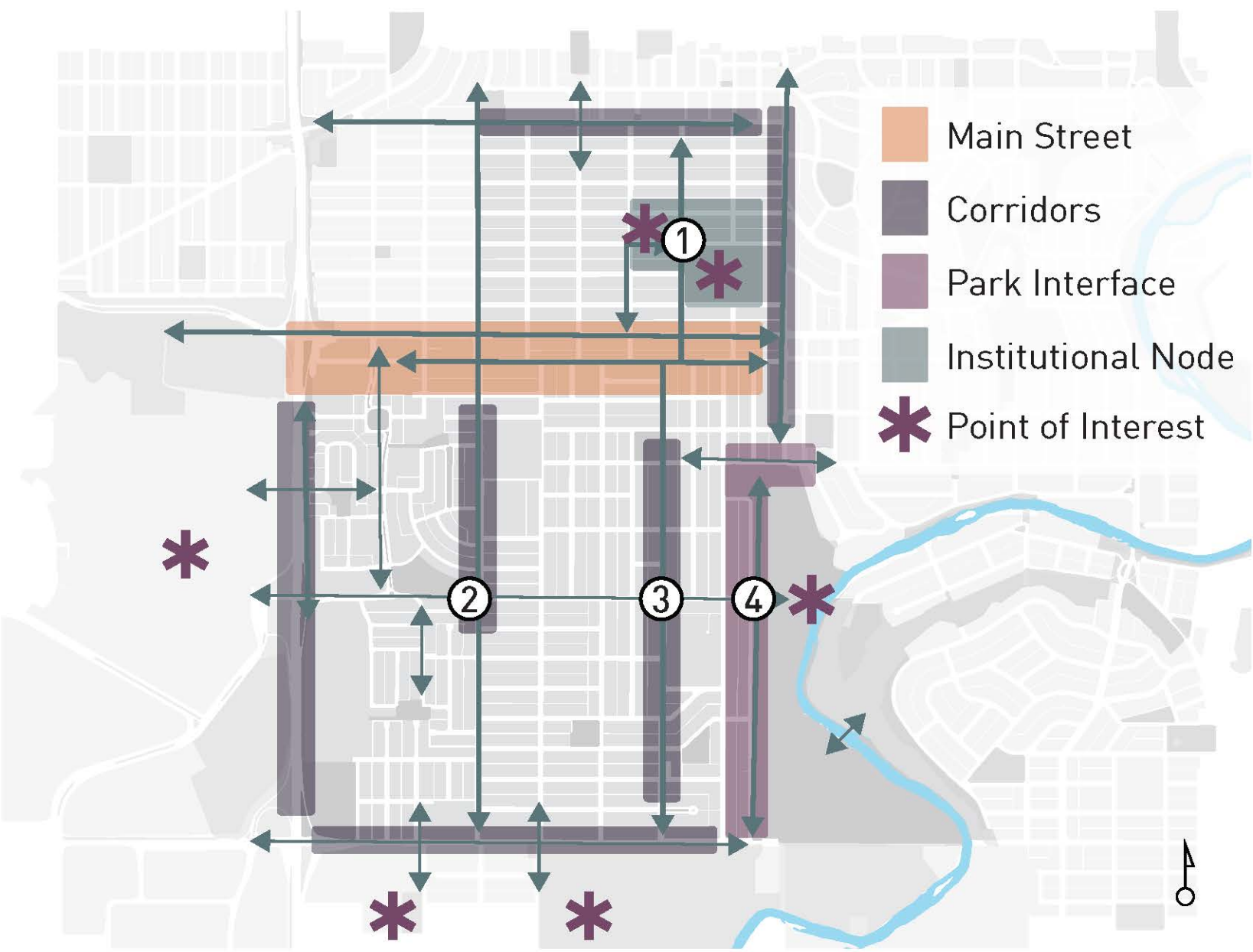


Kensington, Calgary

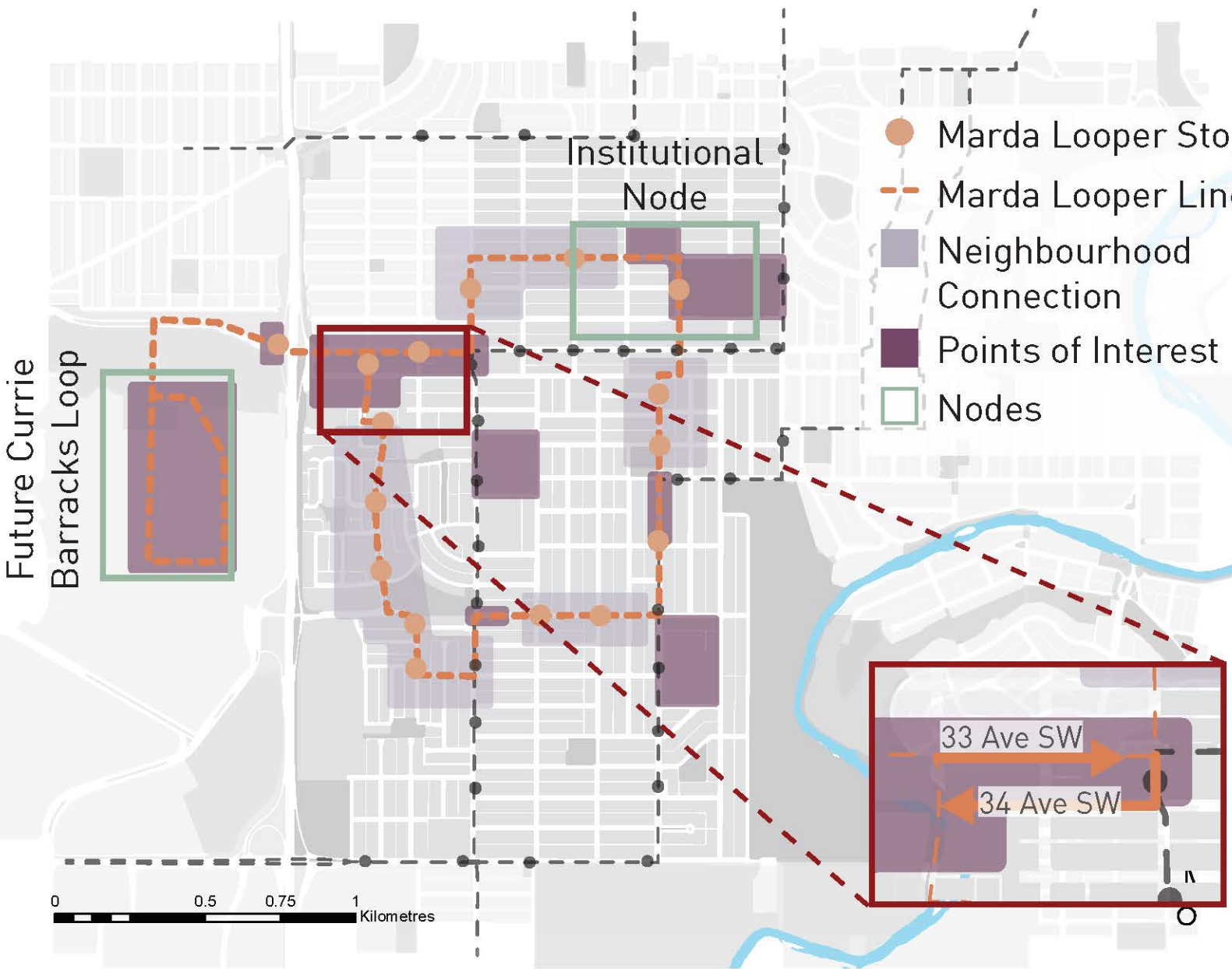


Silver Lake, Los Angeles

Pedestrian Zones & Network



Community Bus: Marda Looper



Connected Nodes



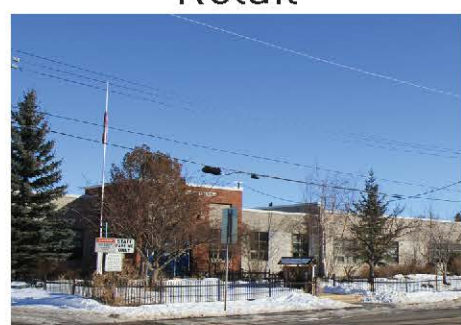
Main Street



Garrison Woods
Retail



Local Retail Nodes



Schools



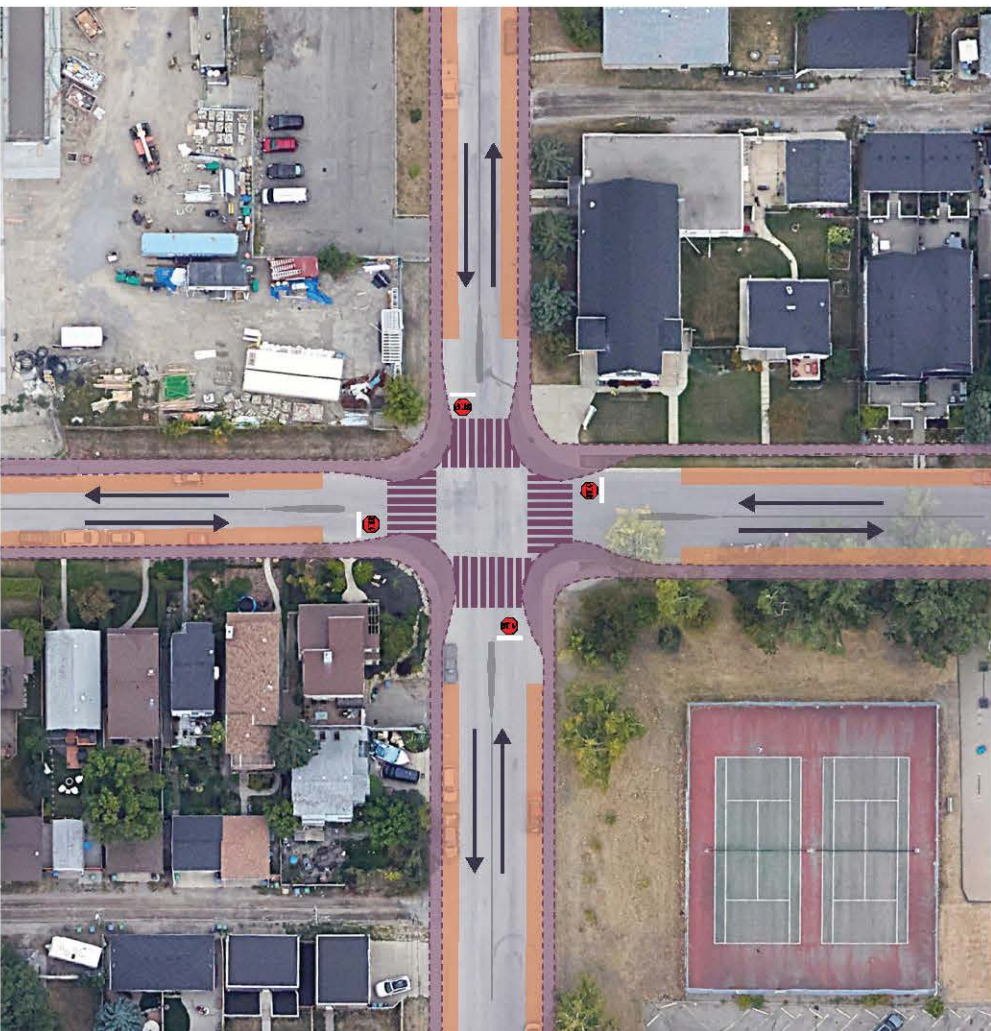
Future Crowchild
BRT



Currie Barracks

Key Intersection Transportation Flows

① Institutional Node Intersection



② 20 Street SW Neighbourhood Commercial Node



③ 16 Street SW School Intersection



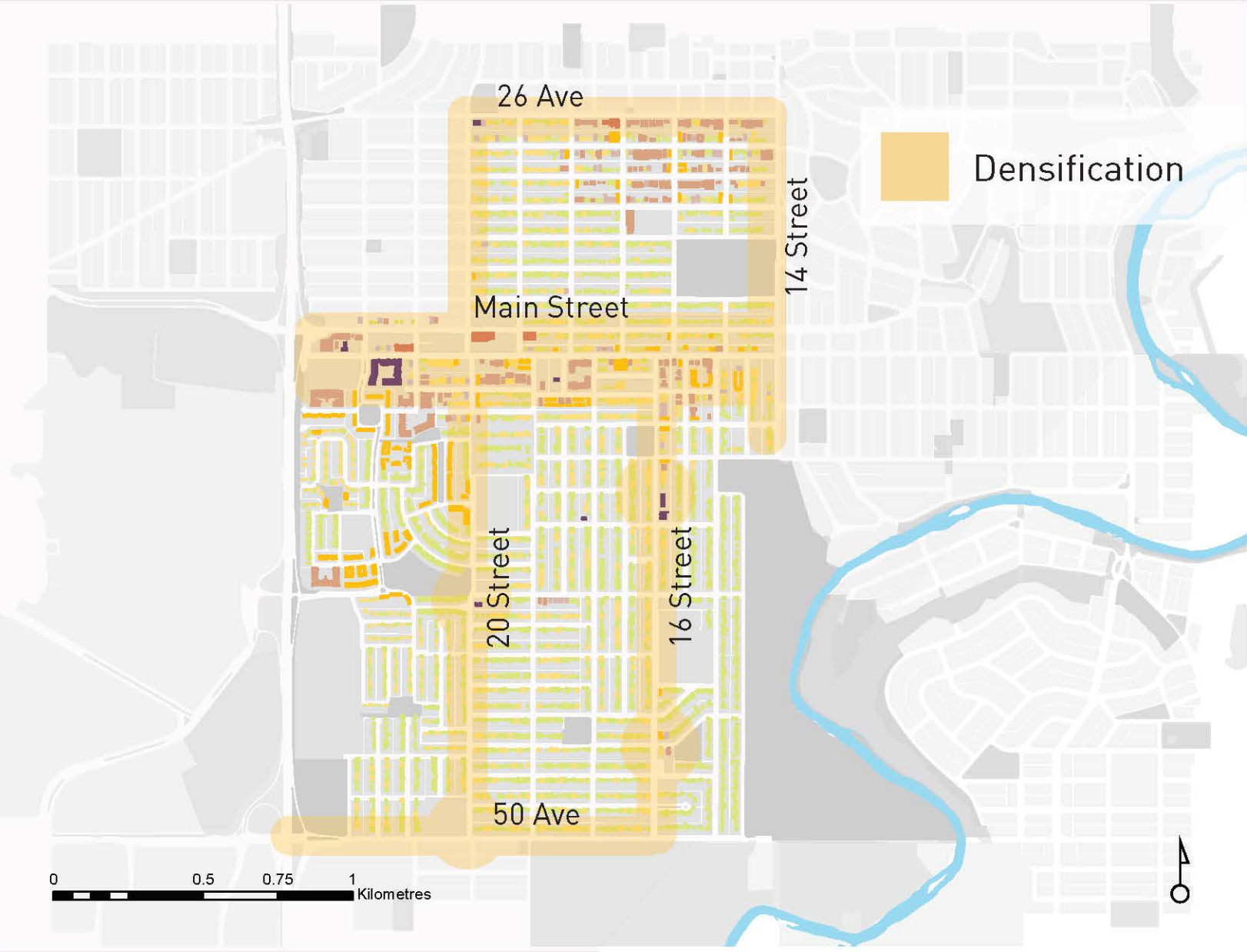
④ River Park 42 Street SW Intersection



Land Use

Ensure a diversity of housing types, commercial spaces, and institutional services.

Proposed Density Zones



Laneway Housing



Garage Conversion

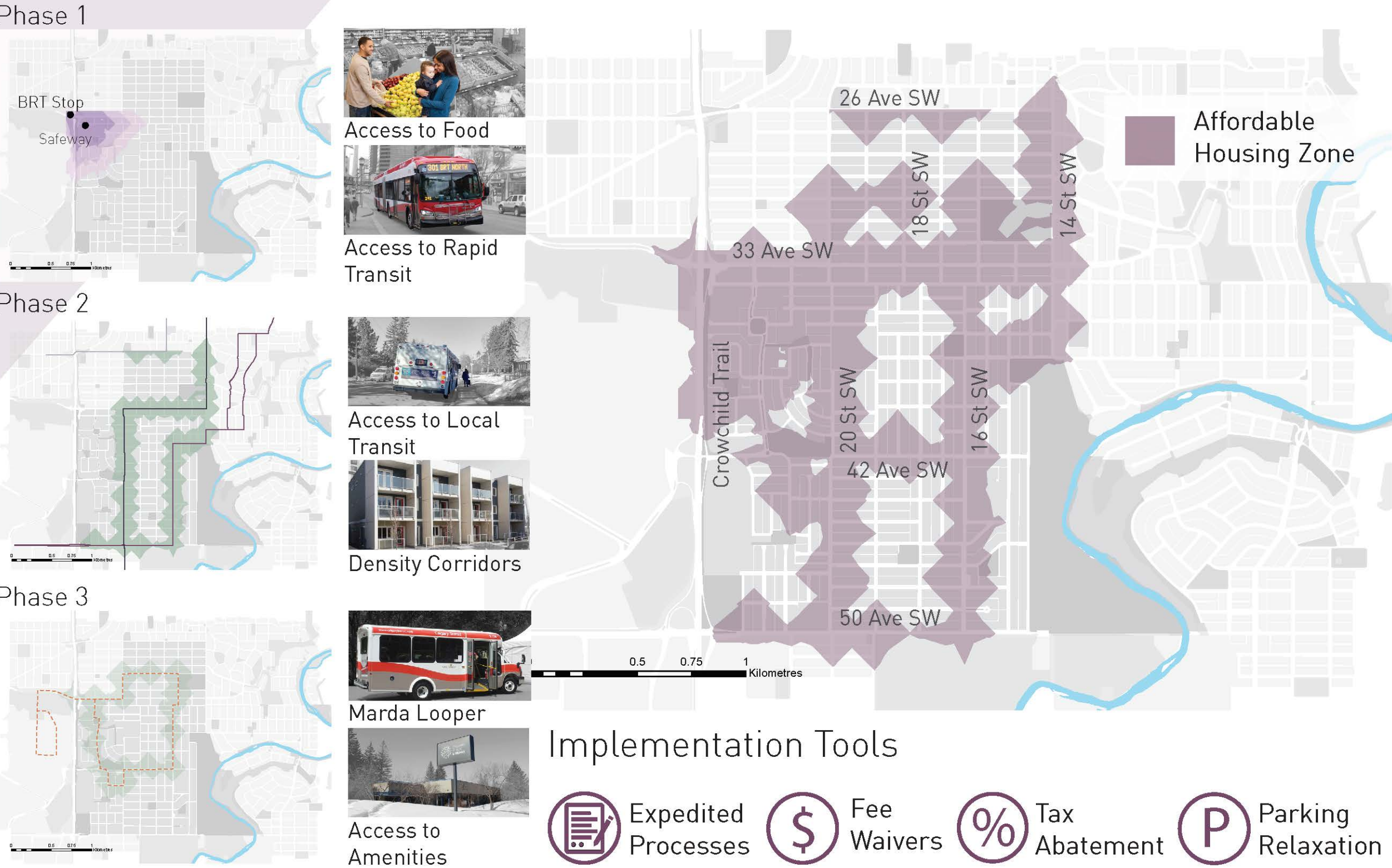


Existing Garages



Laneway Home

Affordable Housing Strategy



Features to Offset Parking Relaxation



Carshare Spaces



Proximity to Transit

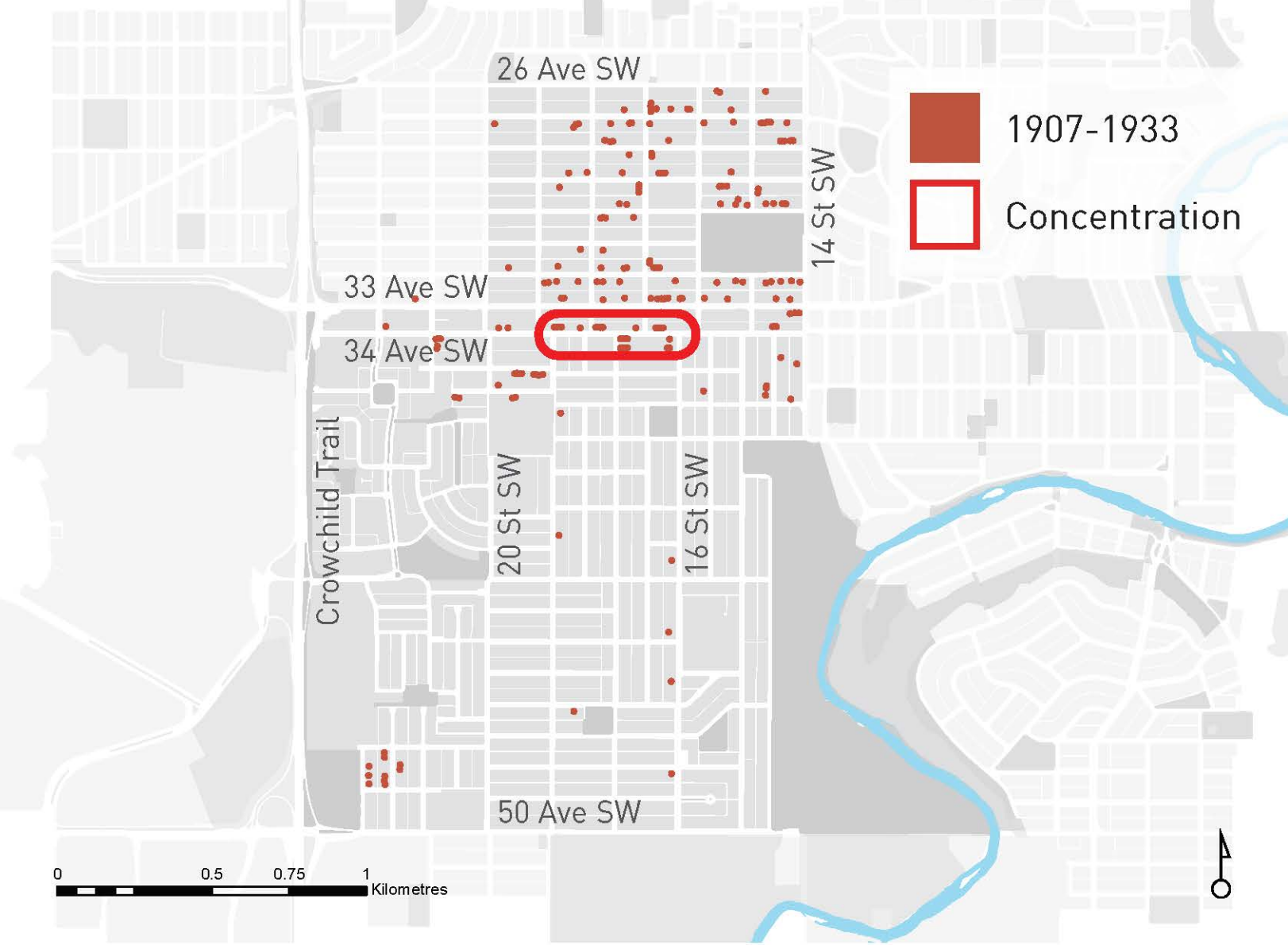


Bikeshare

20 St at 35 Ave, Affordable Housing Development



Heritage Commercial



Heritage Conversion



Residential Use



Commercial Use

Commercial



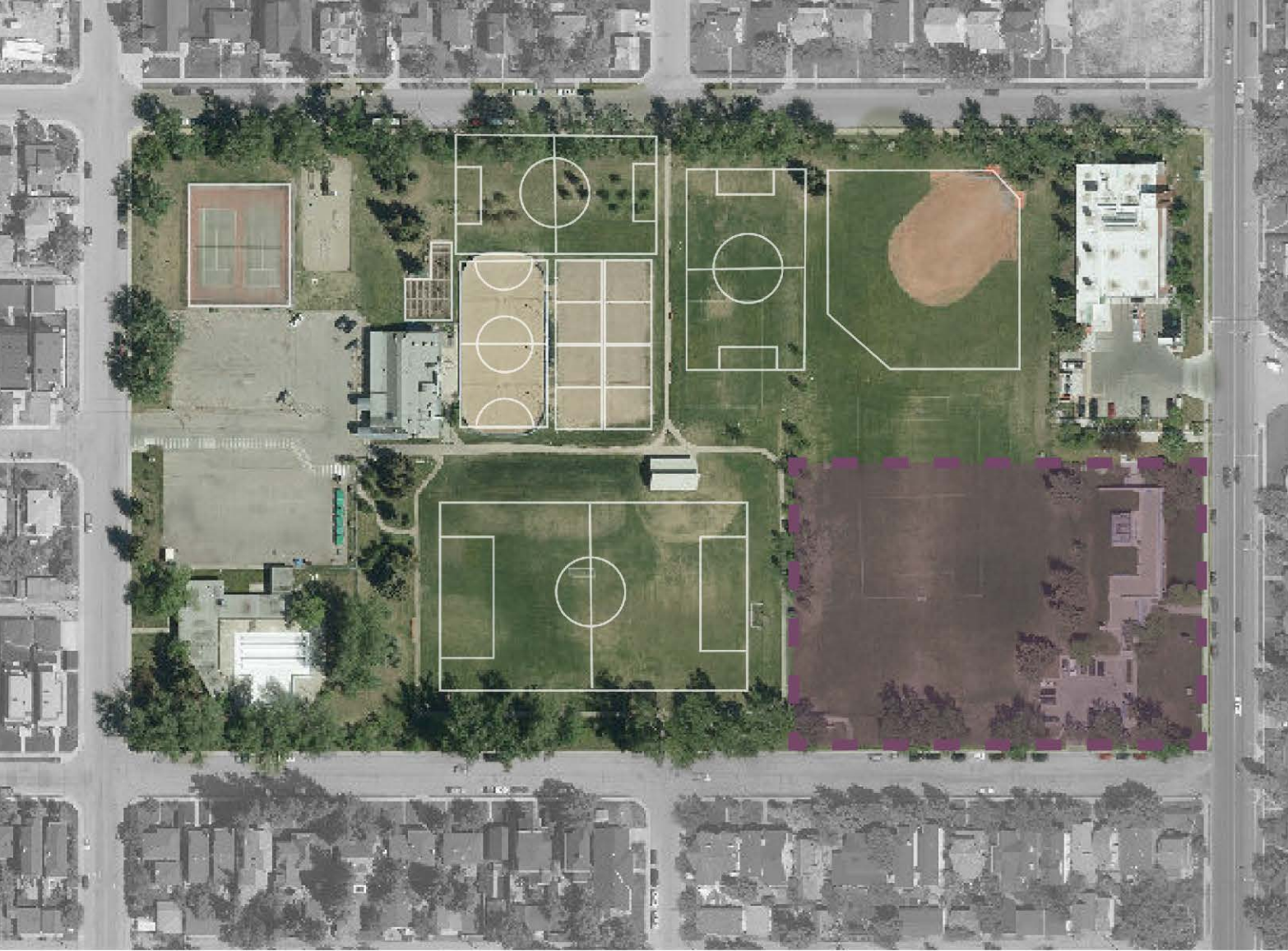
Independently Owned



New Developments



Library Redevelopment



Current Marda Loop Library



Proposed Library Redevelopment



Parks & Urban Design

Parks & Open Space

Increase the quality, connectivity, and accessibility of open space and parks.

Joint Use



Altadore & Rundle



Dr. Oakley

- Basketball Nets
- Soccer Goal Posts
- Baseball Diamond

Neighbourhood Park Upgrades



Nature Play



Multi-use Field



Winter Skating



Public Restroom

River Park Upgrades



Paved Sidewalk Path



Fenced Dog Area



Snow Fence Removal



Blind Corners

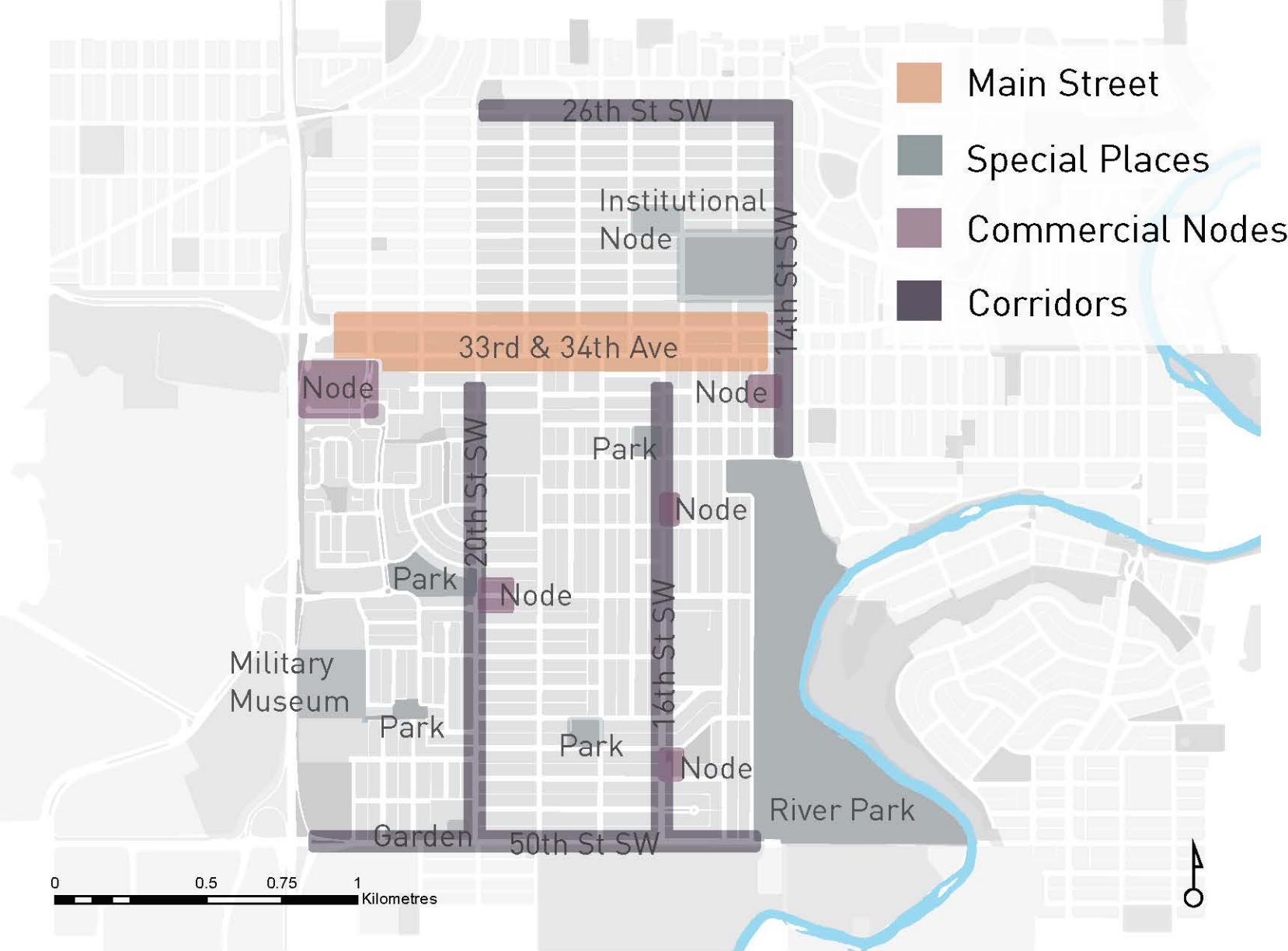


Road Improvement

Urban Design

Improve public realm quality through enhancement of the streetscape, urban elements, and landscape features.

Streetscape Priorities Areas



Washrooms

Park Full-size



Urban



Waste

Stand-alone



Transit

Branded



Bike Racks

Scalable / Secure Parking

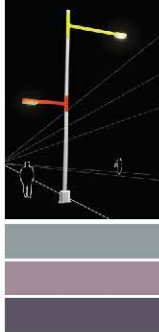


Lighting Hierarchy

Historical



People



Standard



Benches

Sit and Stay Design



Tactical Urbanism

Placemaking



Wayfinding Upgrades

For all transportation



Bioswale Opportunities

Stormwater and Access to Nature



Crosswalks

Enhanced



Street Trees

Ecosystem Services



Boulevards

Street Narrowing



Public Art

Art in the community



Planters

Traffic Calming

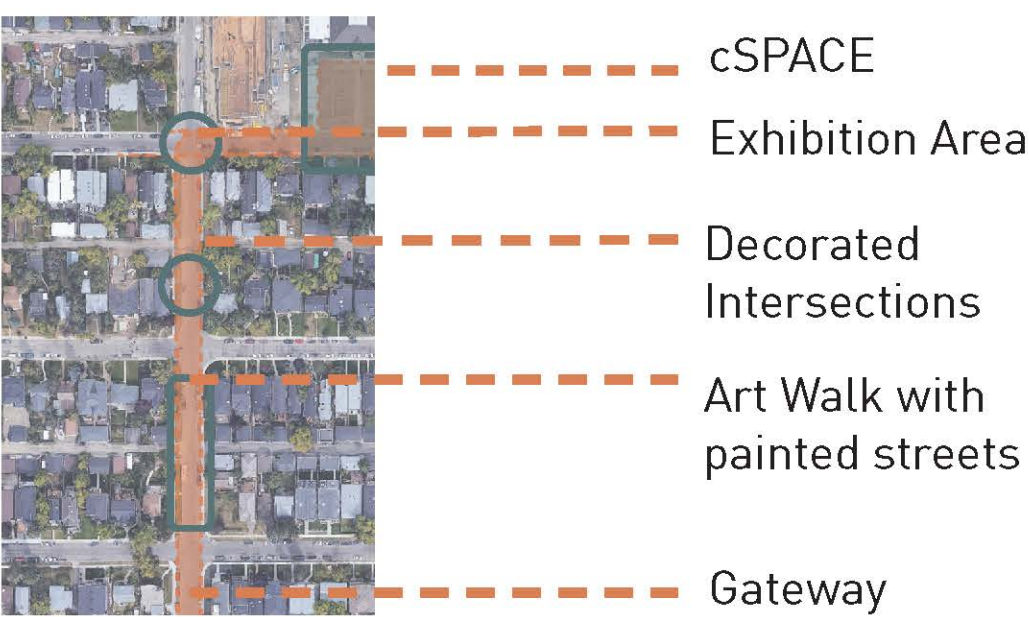


Urban Design in Practice

Spot Improvements at 20 Street & 42 Avenue



Artwalk & Community Gateway Plaza



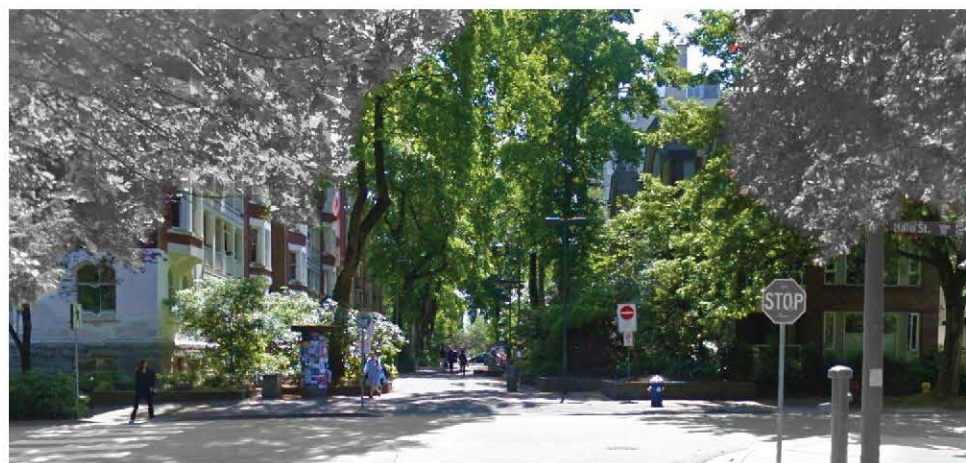
17 Street & 33 Avenue - Art Walk connecting 33 Avenue to cSPACE



17 Street - Neighbourhood Model with connecting Art Walk



Cultural and Community Art Walk

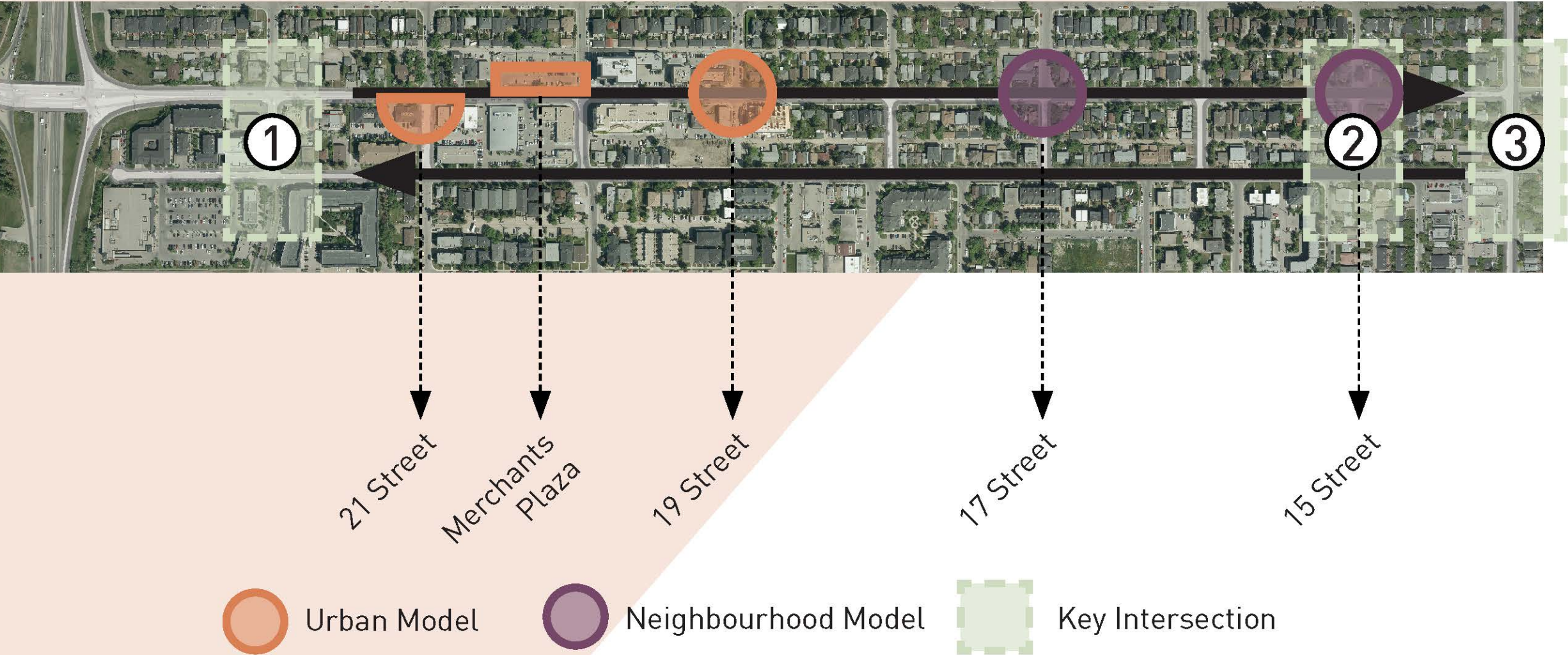


Neighbourhood Plaza / Closed Street

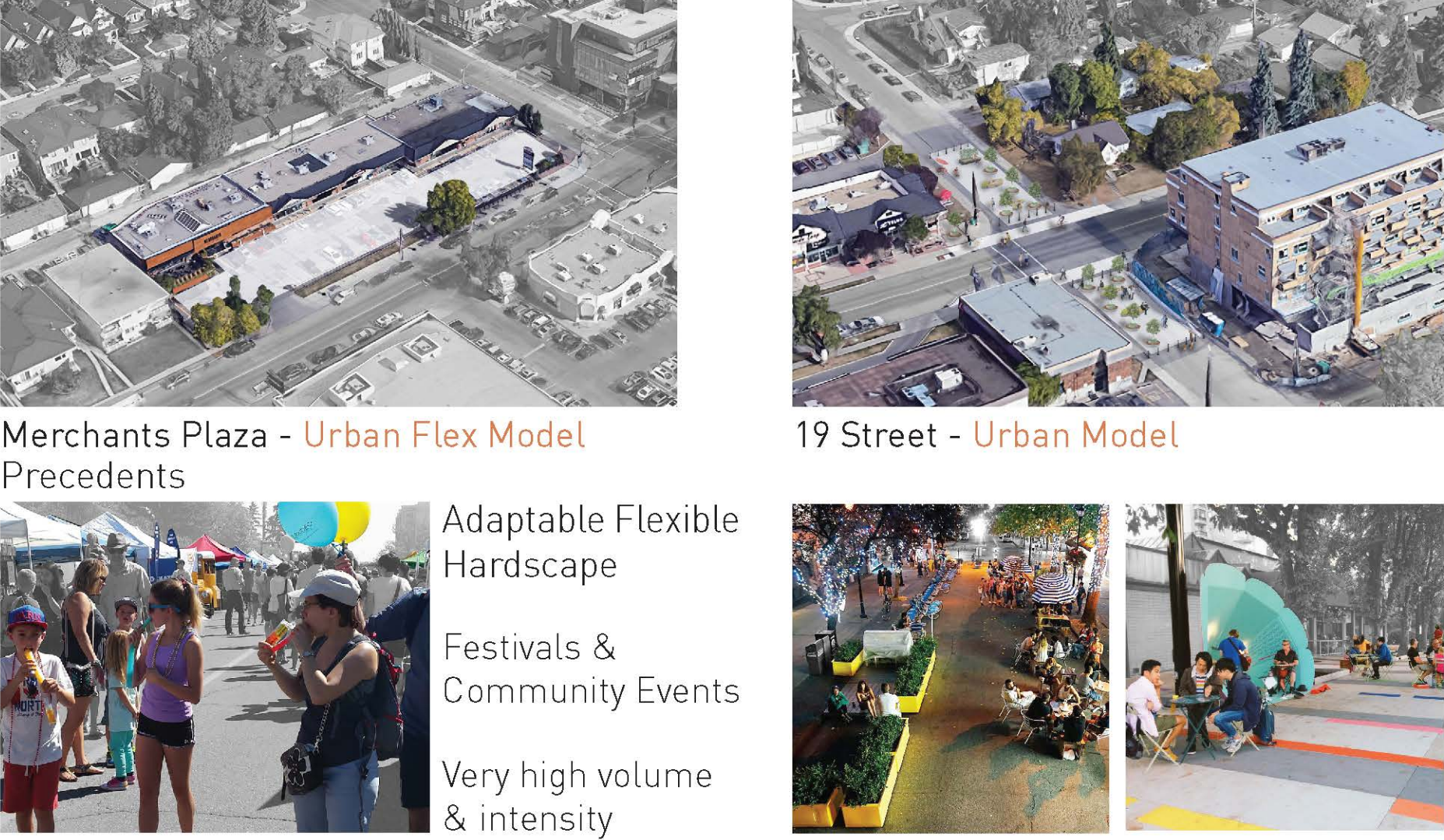
Main Street

Create a vibrant Main Street through public realm enhancements, increased density, and the ability to walk, bike and access transit.

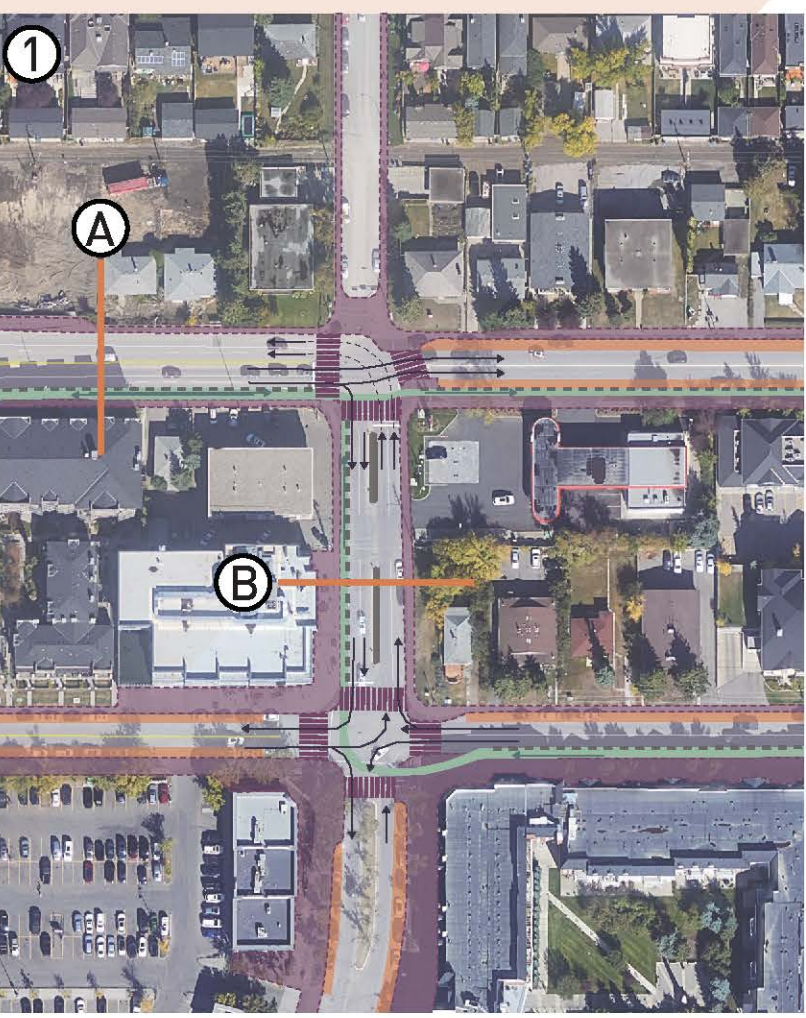
Main Street Key Intersections & Community Gathering Plazas



Public Plaza Programming

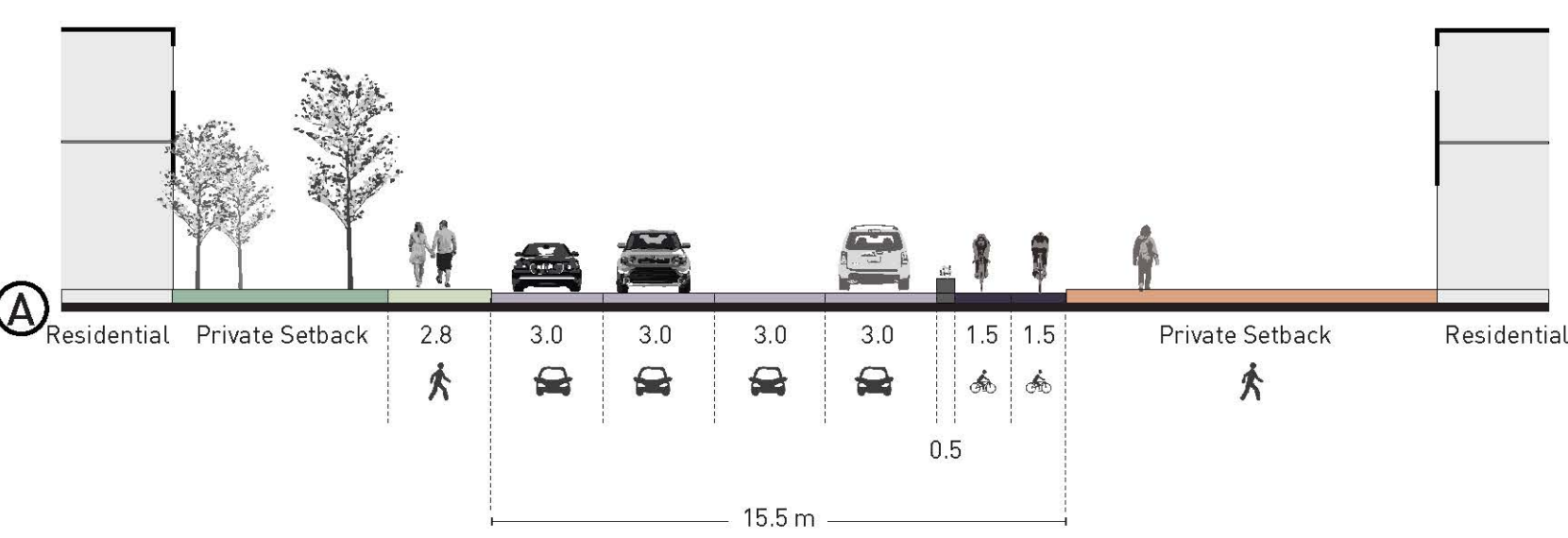


Main Street Mobility Strategy

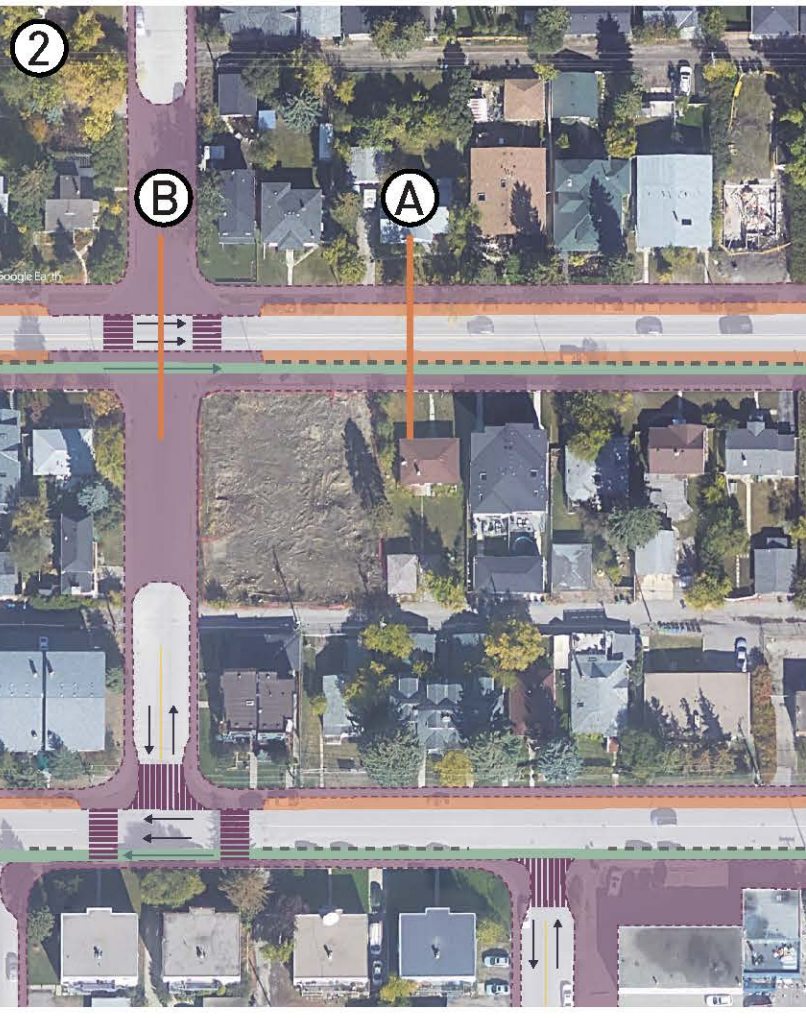
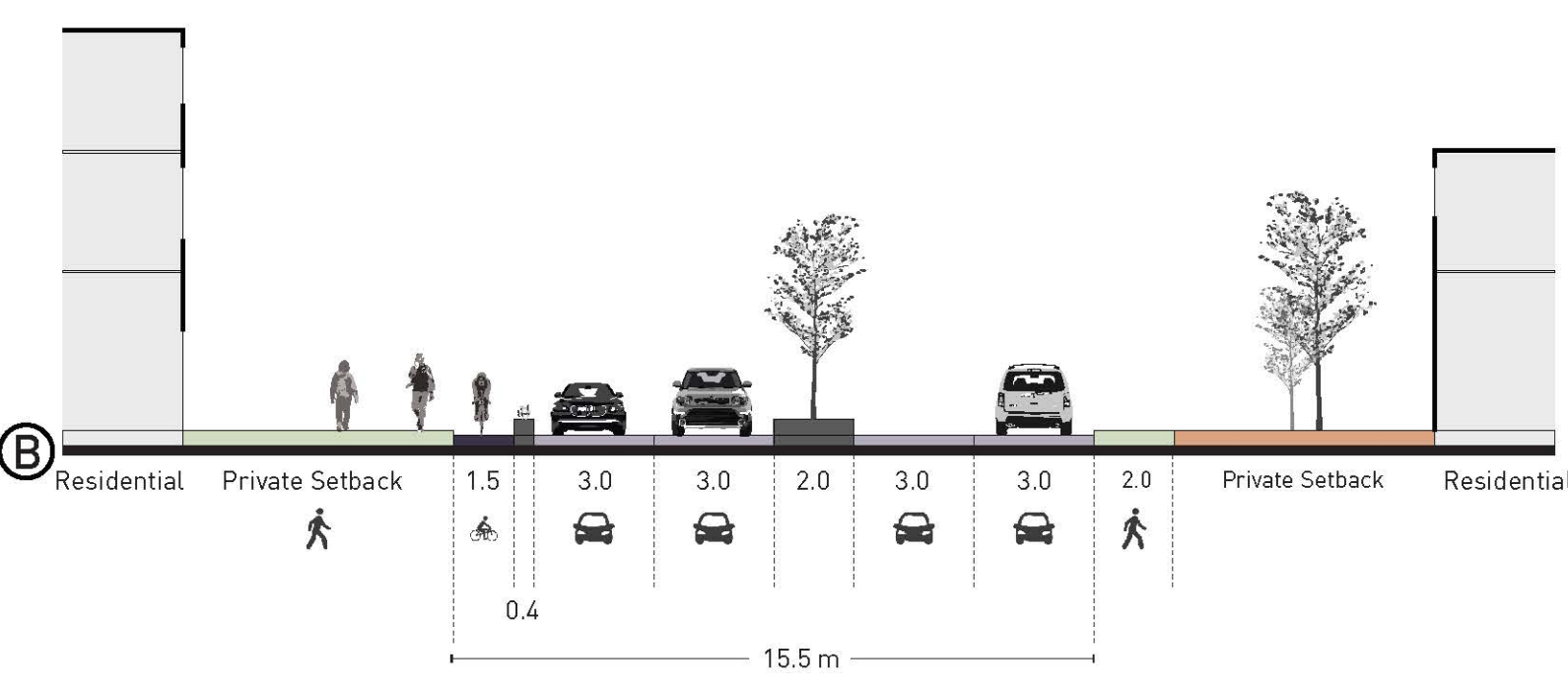


22 Street @ Main Street

33 Ave Two-way Flow

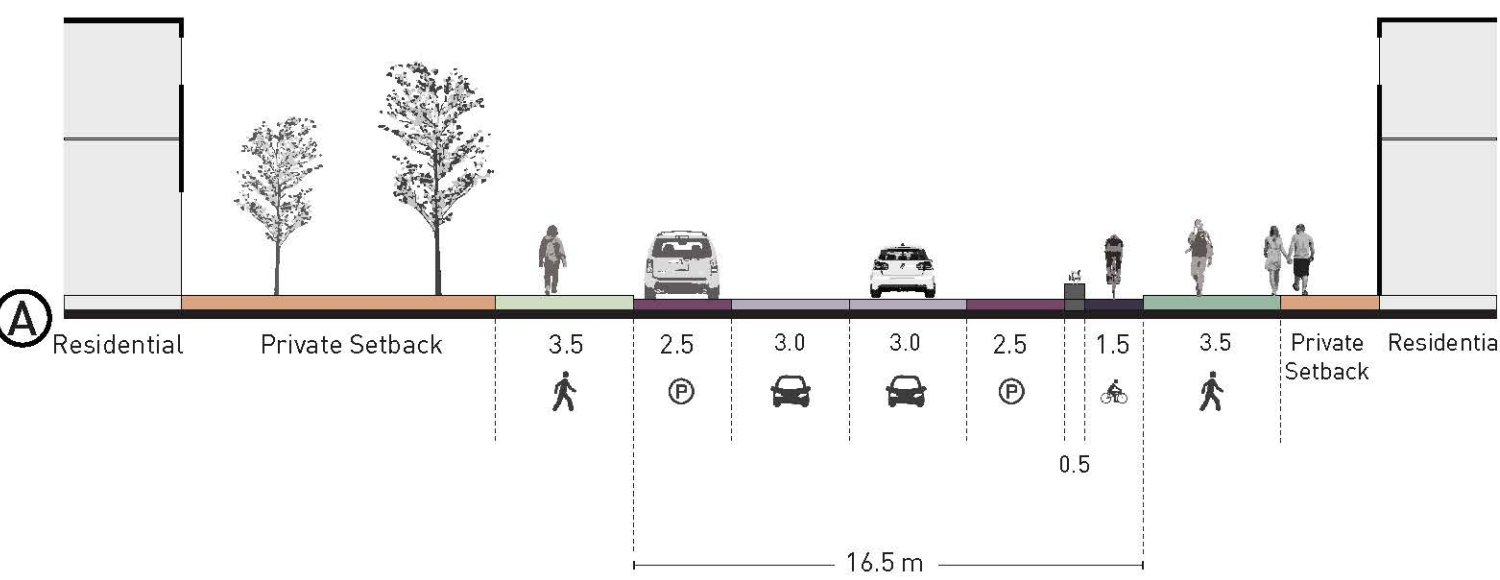


22 Street Connection

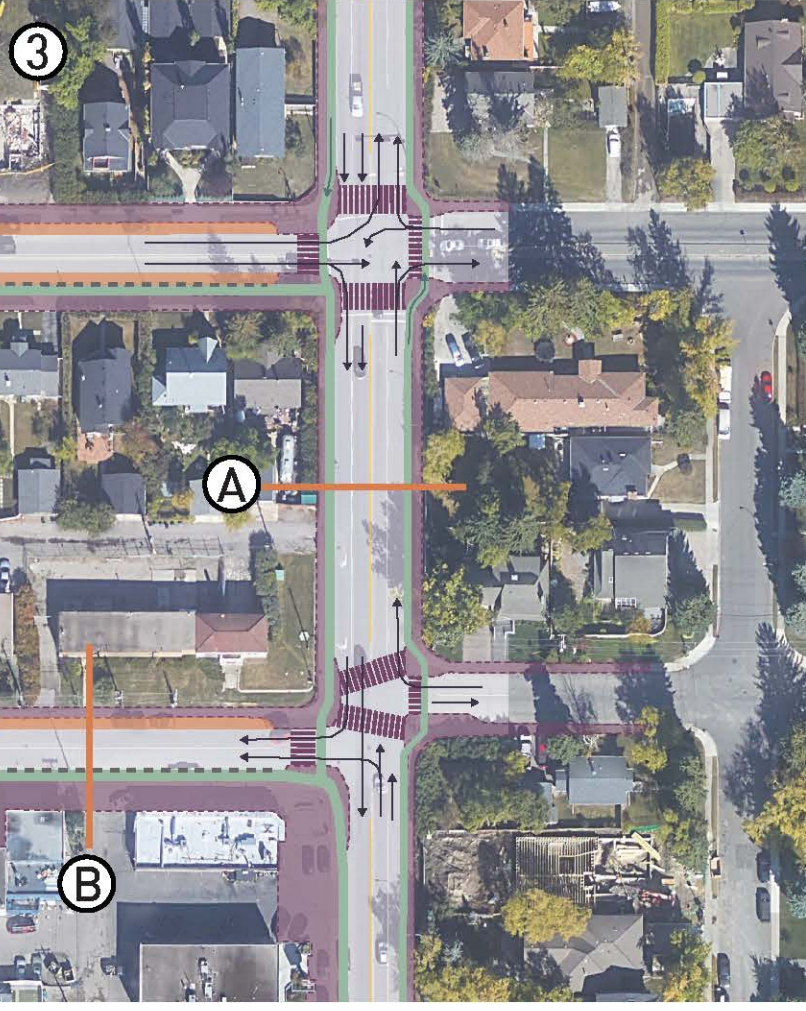
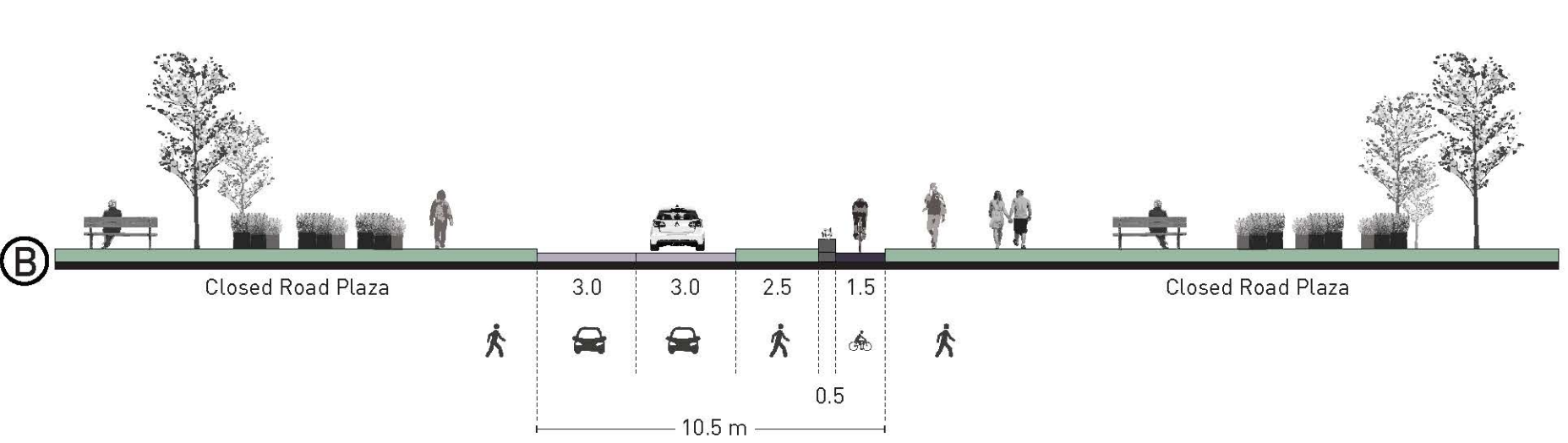


15 Street @ Main Street

33 Ave One-way Flow

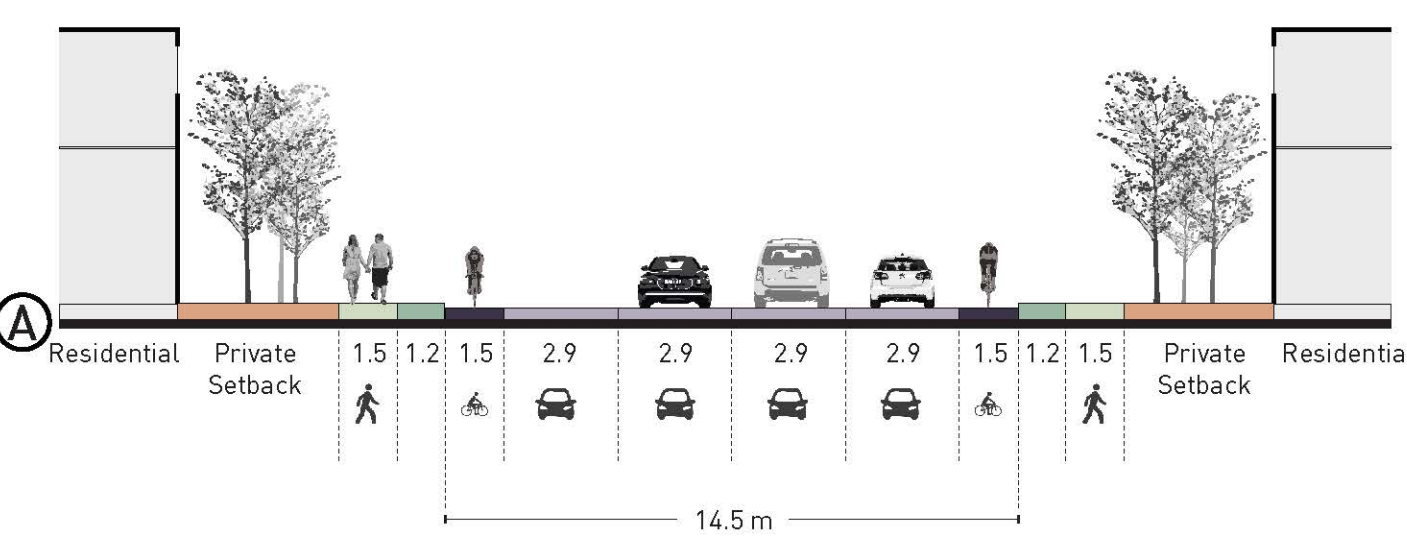


15 Street Neighbourhood Plaza

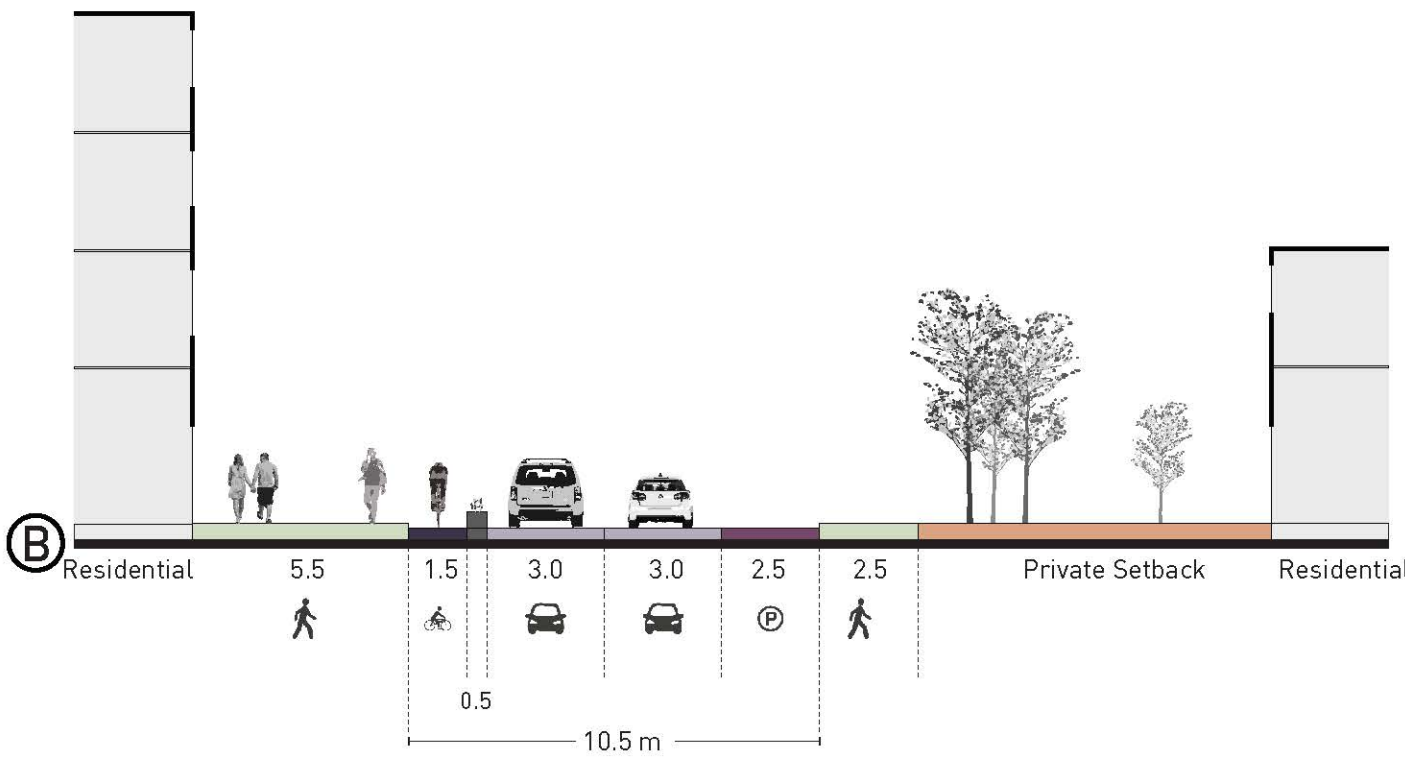


14 Street @ Main Street

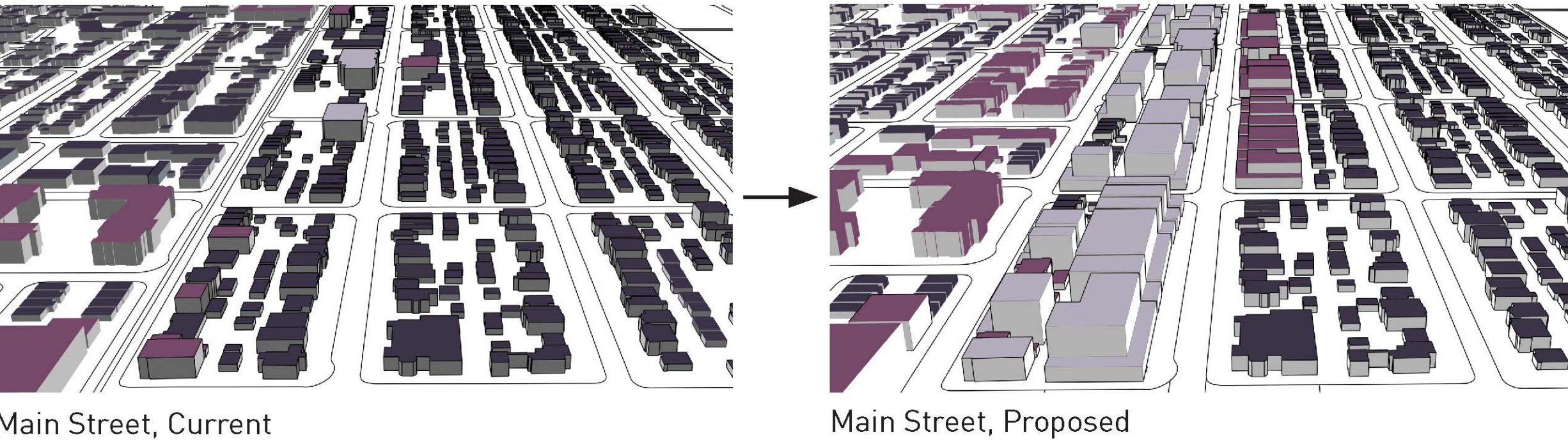
14 Street Bike Lane Additions



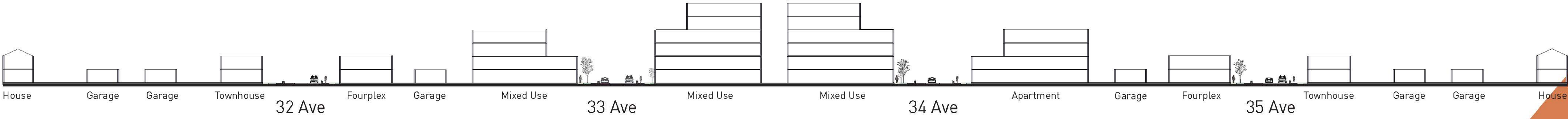
34 Ave One-way



Density Increase Along Main Street



Section, 33 Ave at 20 Street, Density and Height Setbacks



Density Increase Along Main Street

