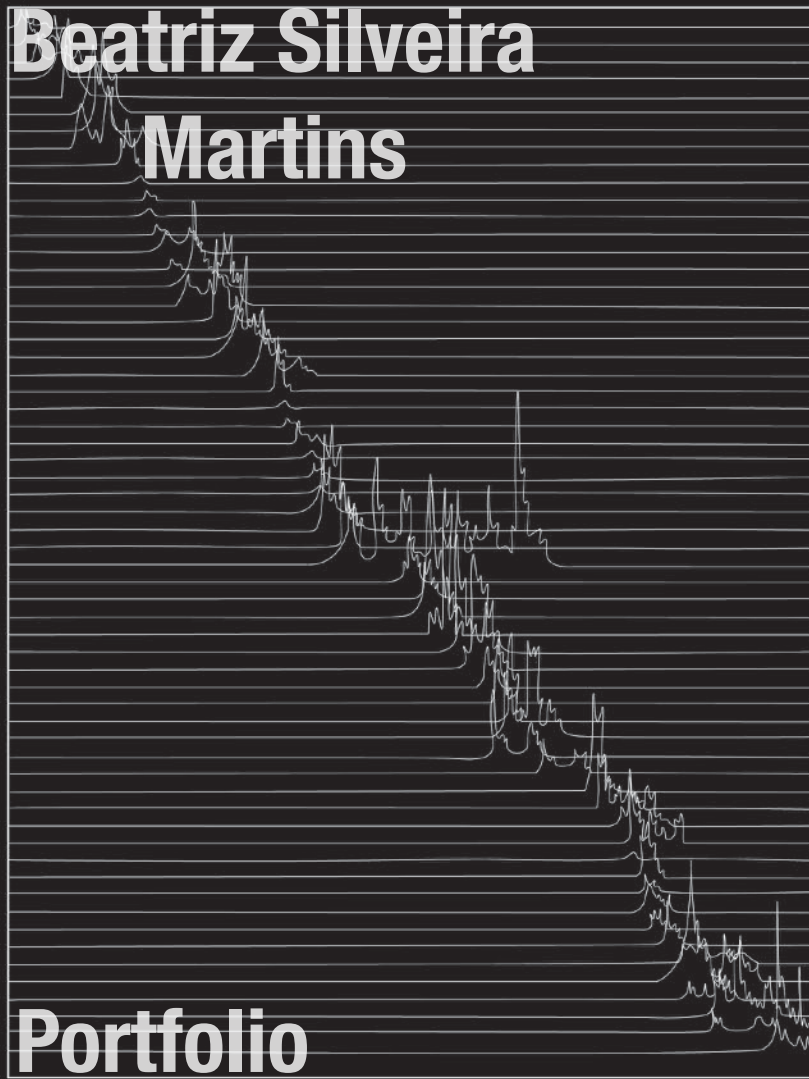
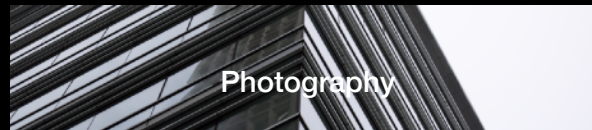
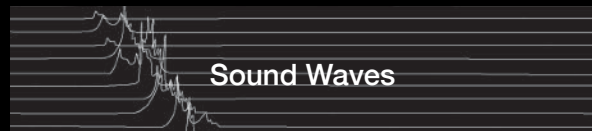


**Beatriz Silveira
Martins**

Portfolio



SUMMARY



and different ways of thinking and perspective so far. Many
explore this incredible city, looking at different angles and ideas
ways to approach. I would not imagine of that piqued my interest.
I would not imagine of that piqued my interest.
I would not imagine of that piqued my interest.
I would not imagine of that piqued my interest.

MEMORY ON 34th STREET



Pen, 21"x30",
November, 2018

Beatriz Martins

This drawing was based of a photo
taken in New York, 2013.

SIMPLISTIC LANDSCAPES

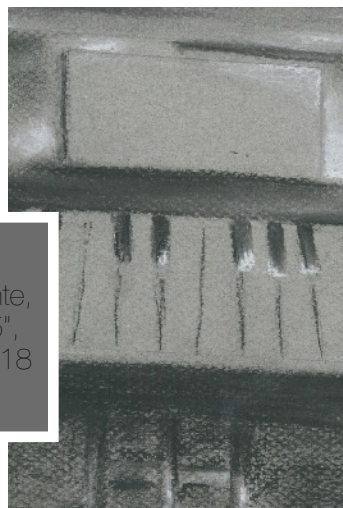


Acrylic,
5"x2.1",
December,
2018

I always believed that landscapes should be portrayed with the most detail possible. However, I learned that not every drawing and every design should be depicted to the smallest detail. These landscapes (all taken from Christopher Nolan's *Inception*) were a start for me to not focus on details but on simple strokes to suggest a landscape.



Life Still, Conte,
25.5"x19.5",
October, 2018



FÜR ELISE

Beatriz Martins

COLLAGE PAINTING



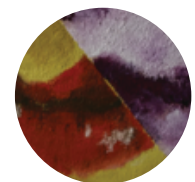
Acrylic Painting,
20"x24",
May, 2018

Beatriz Martins

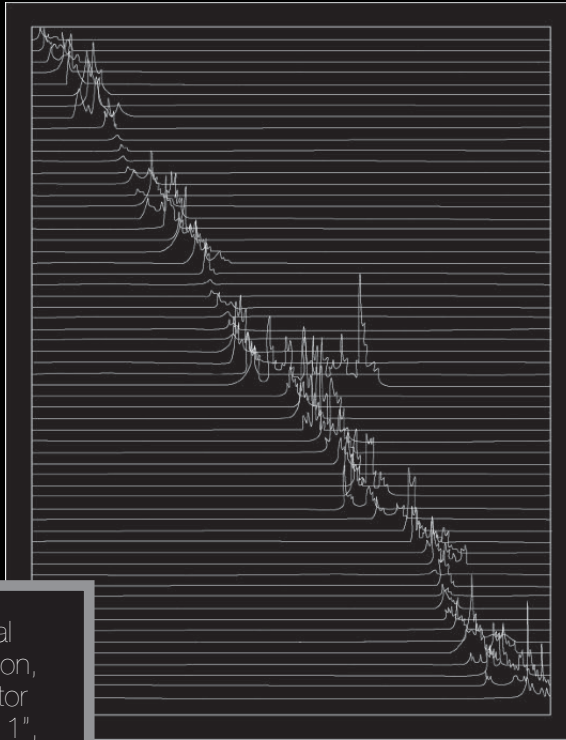
The different faces in this collages represent the many "masks" we use to please others and society instead of ourselves.



The painting was based of a paper collage done for a 2D Arts class. The many pieces put in this particular order allows the viewer to follow the collage with their eyes from the top left to the right bottom.



SOUND WAVES



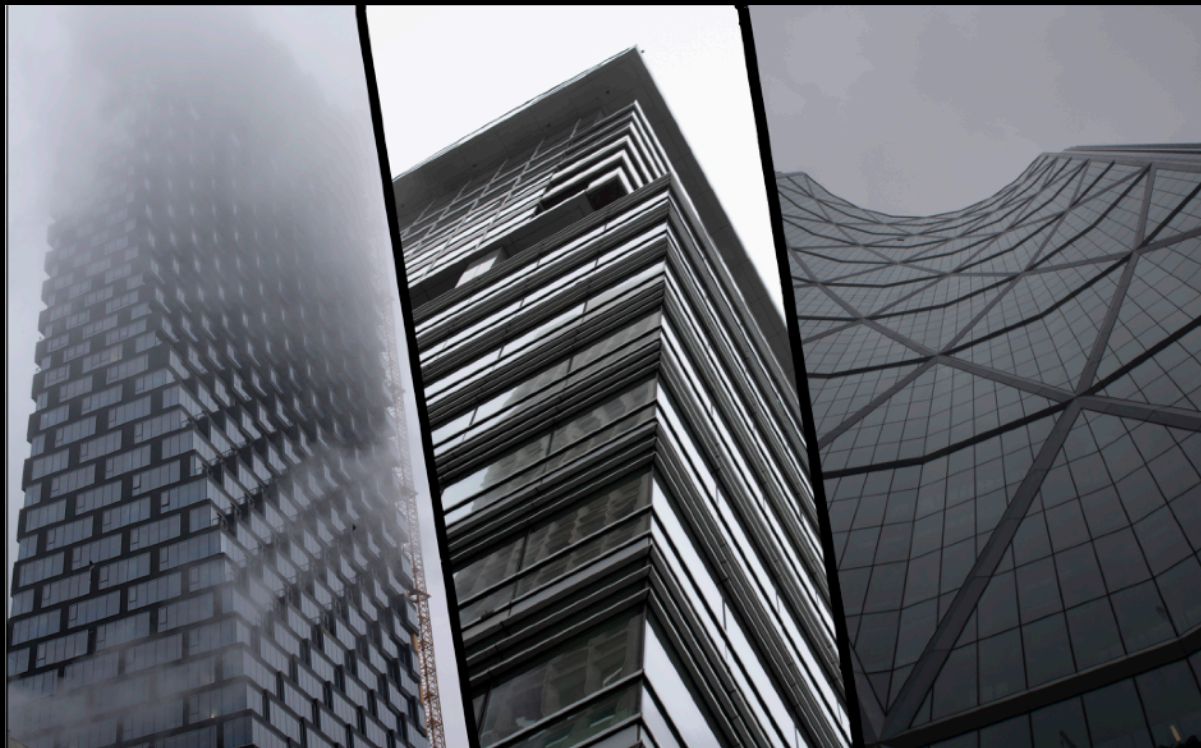
Digital
Illustration,
Illustrator
8.5"x 11",
January, 2019



*Arrangement played for this
piece*

Music has been one of my passions for almost 12 years, so I decided to combine music with arts, creating a visual representation of sound waves, taken from an arrangement of the song "Sozinho" by Caetano Velozo which I played for this piece.

PHOTOGRAPHY



Beatriz Martins