

2 0 1 8

4
Jiminy Crickets
Environmental Design
Product Design

6
Plotline
Architecture
Civic Economy

8
Peace Arch
Graphic Communications
Wayfinding

10
Harwood Manor
Building Sciences
Building Envelope Renovation

12
deCRESCENDO
Architecture
Work + Live Development

16
BCIT Training Centre
Architecture
Academic Design

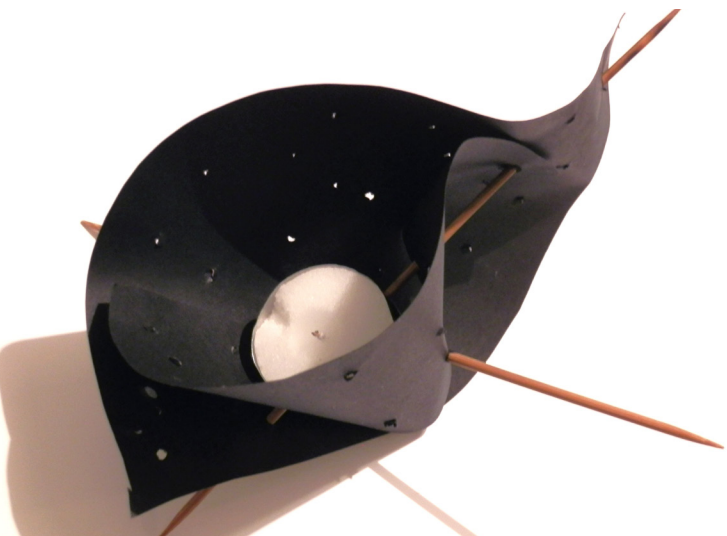
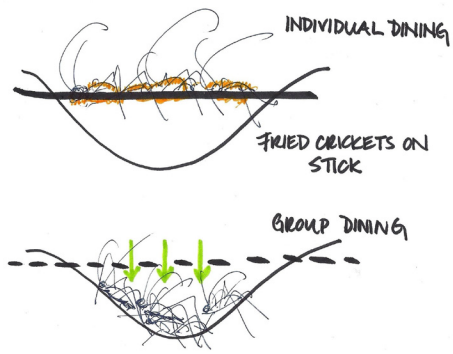
18
Macrodumping
Urban Design + Architecture
Commercial Design

Jiminy Crickets

MULTI-FUNCTIONAL SNACK CONTAINER + TEA LIGHT HOLDER

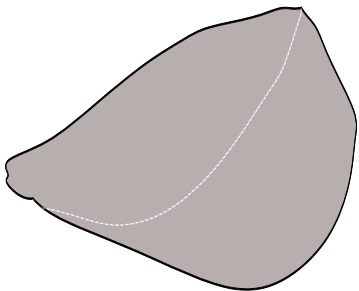
Jiminy Crickets is a snack container for fried crickets-on-a-stick that doubles as a tea light holder. Comprised of a wooden snack stick and inflammable mylar paper, the design makes eating food served on sticks less messy and of an individual experience. Upon devouring this surprisingly savory snack, adventurous foodies can use the leftover container or assemble a bunch of them together to produce an assortment of undulating, voluminous forms that can hold tea light candles. The overall design emphasizes on trying something new and unfamiliar, by tapping into the user’s explorative, playful side.

Environmental Design Studio IV
January - April 2015
Professor B. Pechet



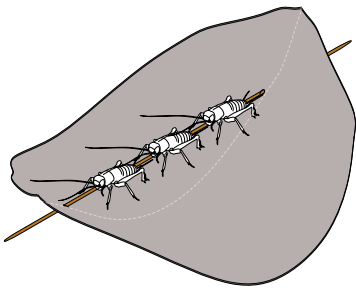
The Tie that Binds

With the desire of utilizing the snack stick as a binding instrument, the design is focused on creating a secondary container, using threading as the method of joinery between the two. This concept was explored + tested by experimenting with different material types.



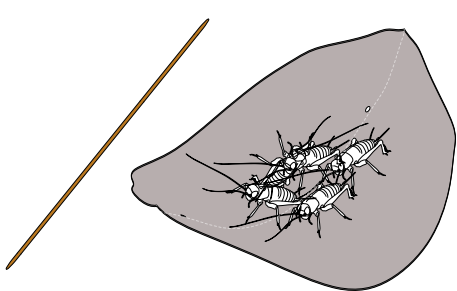
Organic Shape

Leaf-shaped container designed to evoke memories within users - the nature of catching the very food we eat, molded against our hands



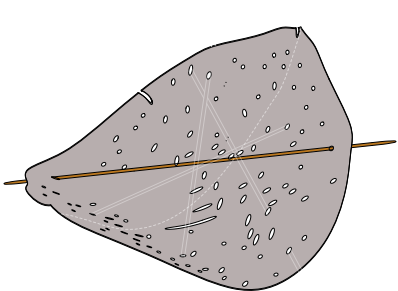
Catchment

Working with the user’s chin, the design contains and catches leftovers bites when they fall off the stick, but before they land on the ground



Sharing

Users can take the food off of the stick - the fried crickets will collect on the container and can be passed around to others to be shared



Exploration

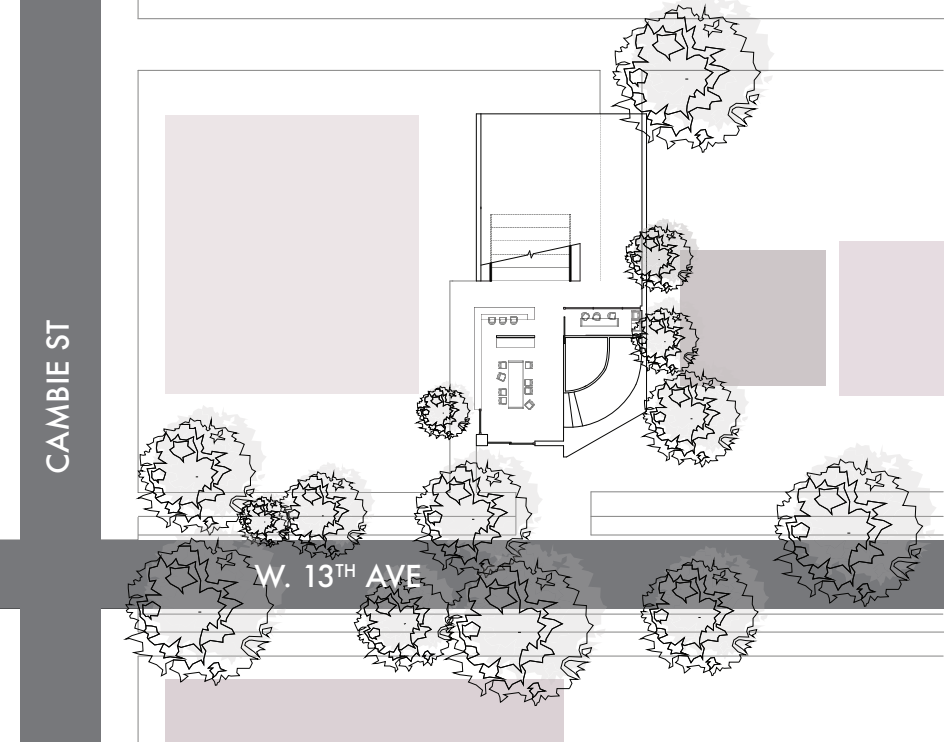
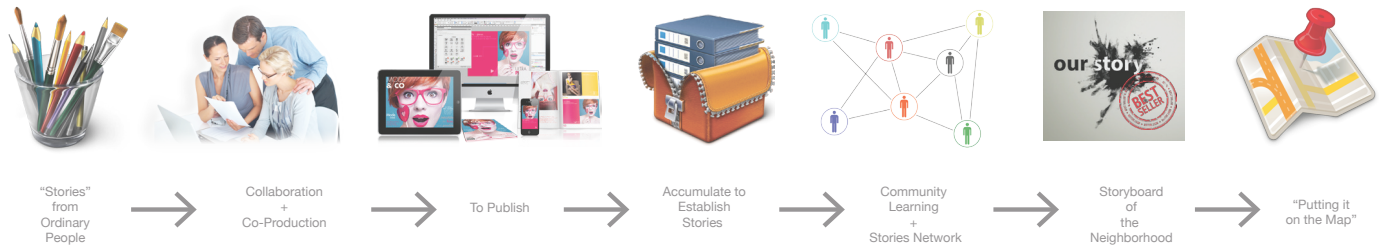
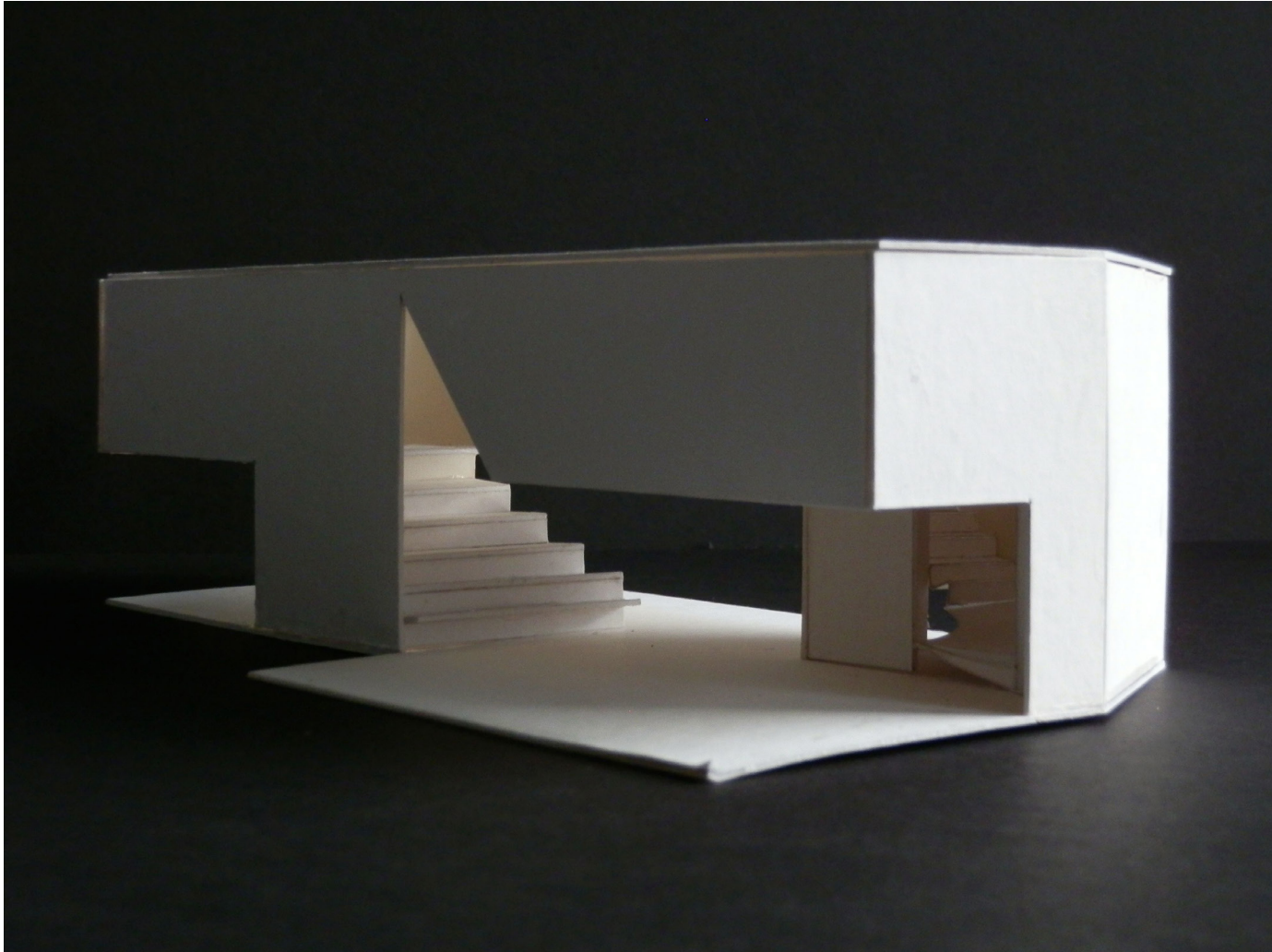
Upon devouring the snack, one can use the stick to poke holes in the container, creating volumes that hold a single tea light candle

Plotline

CAMBIE VILLAGE'S NEIGHBOURHOOD LIBRARY + PUBLISHING HOUSE

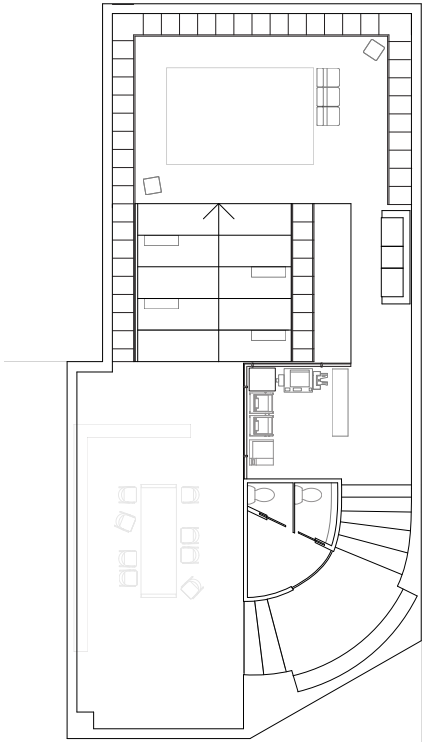
Plotline is a neighborhood publishing library, focused on the making, keeping, and sharing of stories from ordinary people. Situated in one of Vancouver's oldest neighborhoods, this self-generating library allows the people of Cambie Village to discover ways to create, publish, and share personal stories in a print context. The space doubles as a community living room, where one can explore, lounge, and peruse the shelves to learn about the lives that make up this great community. Grounded in the concept of objective, independent distribution of information, the building's form and programming follow the sequence of a story plot.

Environmental Design Studio III
September - December 2014
Professor R. Kellett



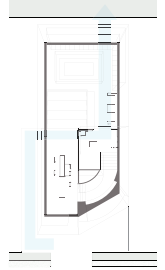
Storybook Setting

The intersection of Cambie and West 13th stands as an introduction to Cambie Village. The open Ground (above) and Upper Floor (right) plans of the building attempts to reflect its surroundings.



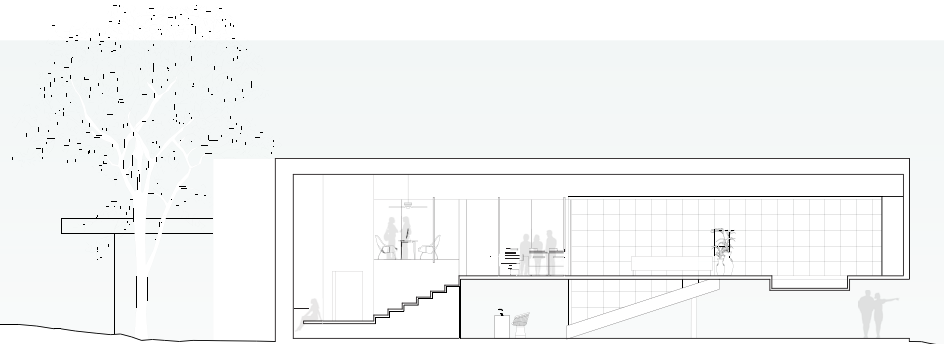
Site Considerate

As a transient community space, Plotline retains the existing walking path and residential access



Spatial Storyboard

Main floor spaces for brainstorming, ascending spaces for creation, and top floor for sharing



Peace Arch

SIMPLE, COLORFUL SHAPES
AS POWERFUL WAYFINDING
TOOL

With the ocean to its south and the mountains to its north, **Peace Arch Elementary School** sits in a quiet White Rock suburban neighborhood. As a designer, I was informed by the Parent Council that the school required an updated, interactive map that not only outlined its layout, but highlighted key gathering spaces for various events and activities that occurs throughout the academic year. After a couple of meetings, I explored ways to highlight the school's identity by incorporating its logo and spirit animal in unique ways, as well as celebrate Peace Arch's long standing French Immersion program and culture. In the end, a colorful marker board was produced as an interactive map, which capitalizes on simple shapes and a playful palette as powerful wayfinding tools.

Freelance Design Work
2017



Harwood Manor

CONTEXTUALLY-BASED BUILDING ENVELOPE RENOVATION

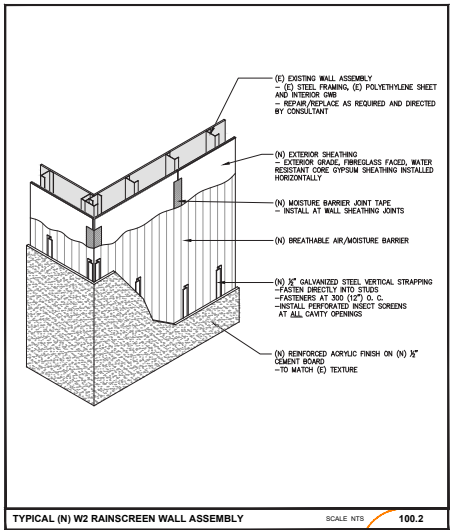
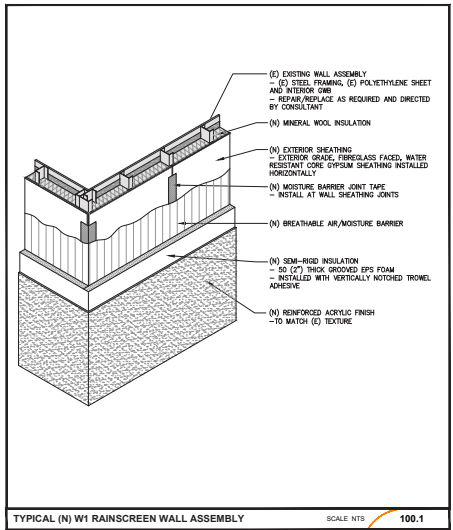
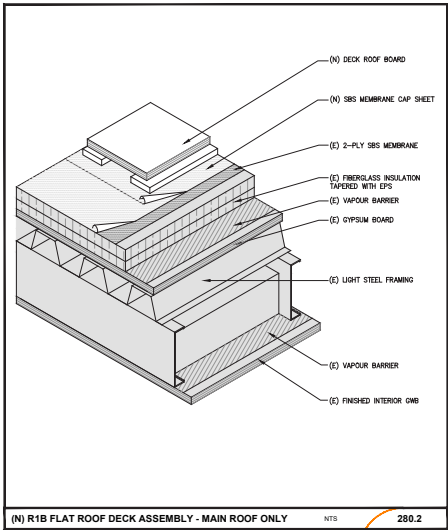
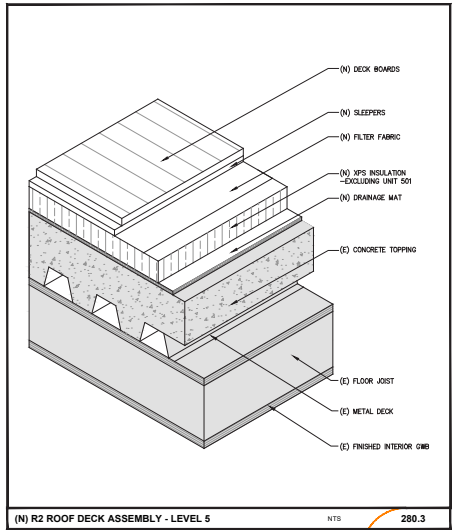
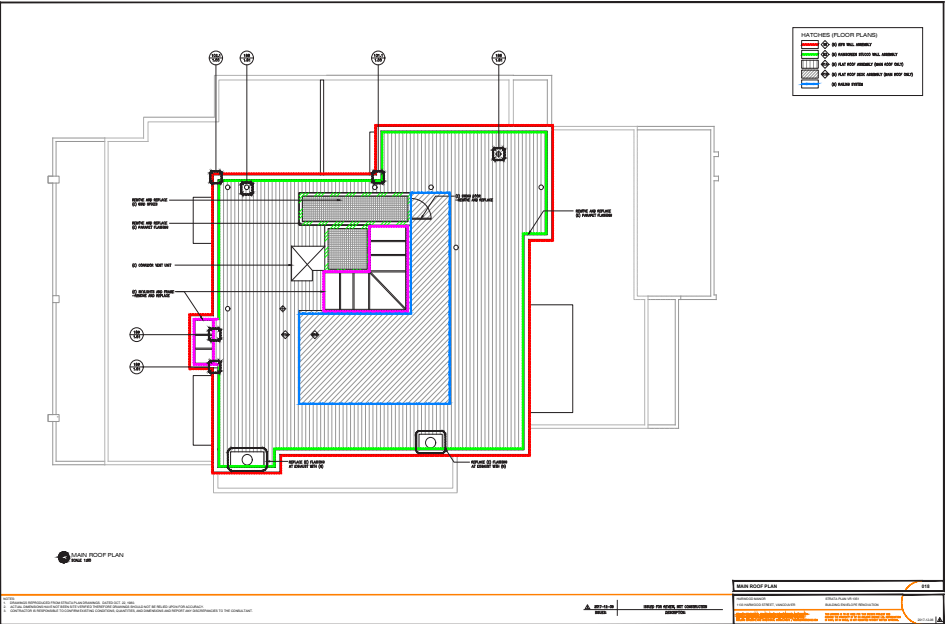
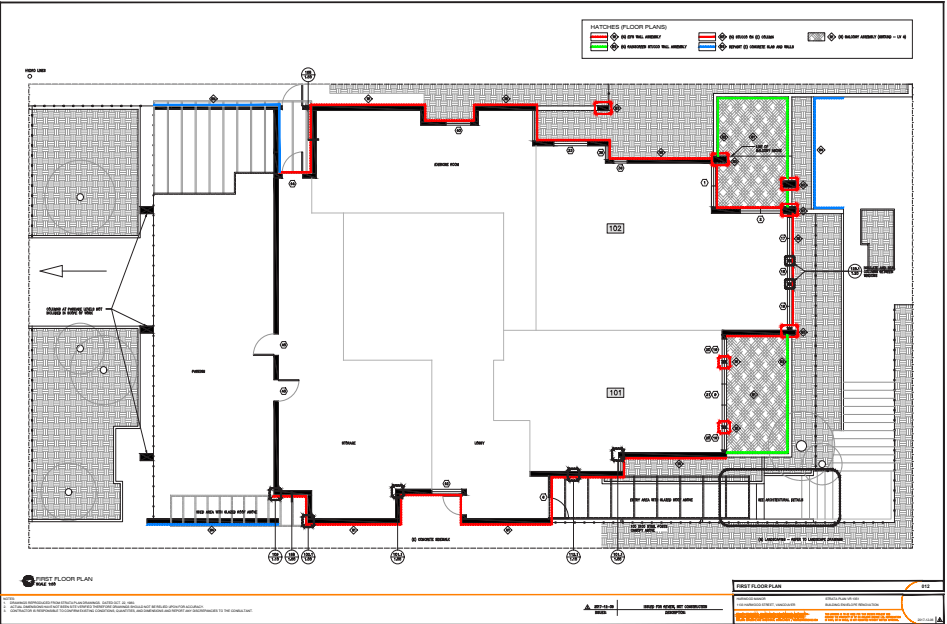
Harwood Manor (1133 Harwood St.) is a 27 year-old residential complex in need of building envelope renovation. As Project Coordinator at BC Building Science Ltd. (BCBS), it was my responsibility to correspond and translate the client’s comments and design input into a visual format, producing a comprehensive set of architectural drawings and construction details for permit. Ultimately, it was decided that the existing wall assembly would be reinforced with new EIFS and acrylic cladding. Along with necessary membrane replacements, all windows and exterior doors will also be replaced with new equivalents. In addition, a proposed colour scheme has been set forth for client consideration that follows that of the neighborhood, while adding a splash of vibrancy and dynamism.

Building Sciences + Redesign
July 2017 - Ongoing
| BC Building Science Ltd.



Colour Scheme

In contrast to the existing building (top), the proposed color scheme seeks to harmonize with that of the neighborhood, while showcasing its unique personality and character

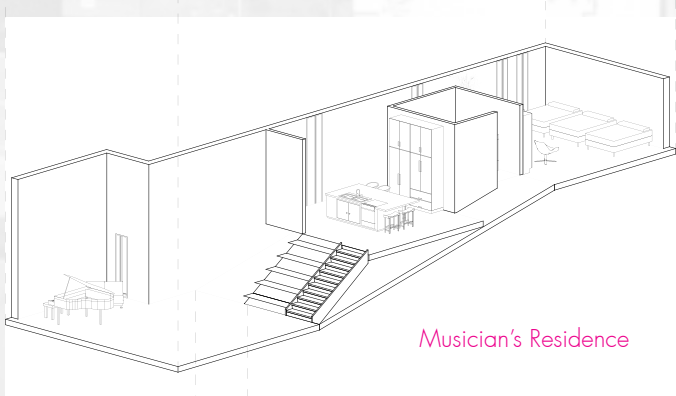
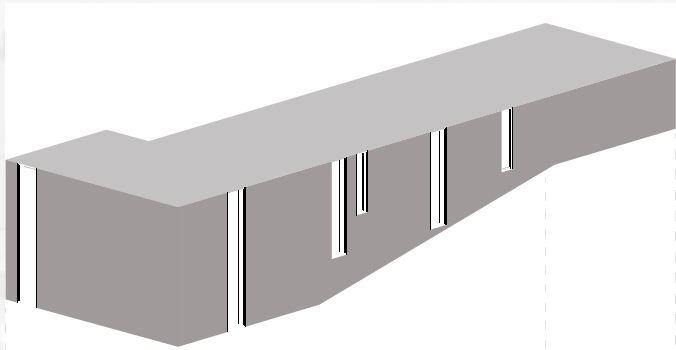


deCRESCENDO

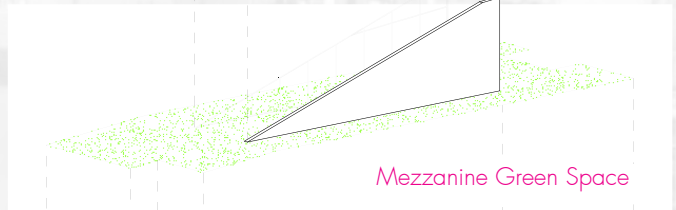
SYNERGISTIC
WORK + LIVE
HYBRID DWELLING

With Vancouver’s growing population and flourishing ventures, this project explores the potential for work/ live developments to revitalize existing neighborhoods, by combining affordable housing and civic economies that cultivate an open, social community culture. Located at the corner of Ontario St. and E. 5th Ave, **deCRESCENDO** is a part of a complex of 6 interconnected work/ live structures. At street level, the building houses a multifunctional test kitchen - a professional enterprise that doubles as a public space to allow ordinary people to cook and experiment with food. Above, an open living space is created to fulfill the domestic and musical needs of a trio of musicians. Overall, the design reflects the decrease in noise and sound generation, moving inwards and up.

Environmental Design Studio III
September - December 2014
Professor R. Kellett



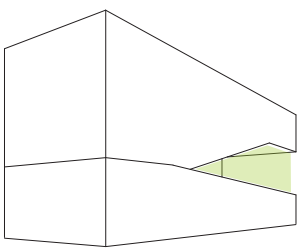
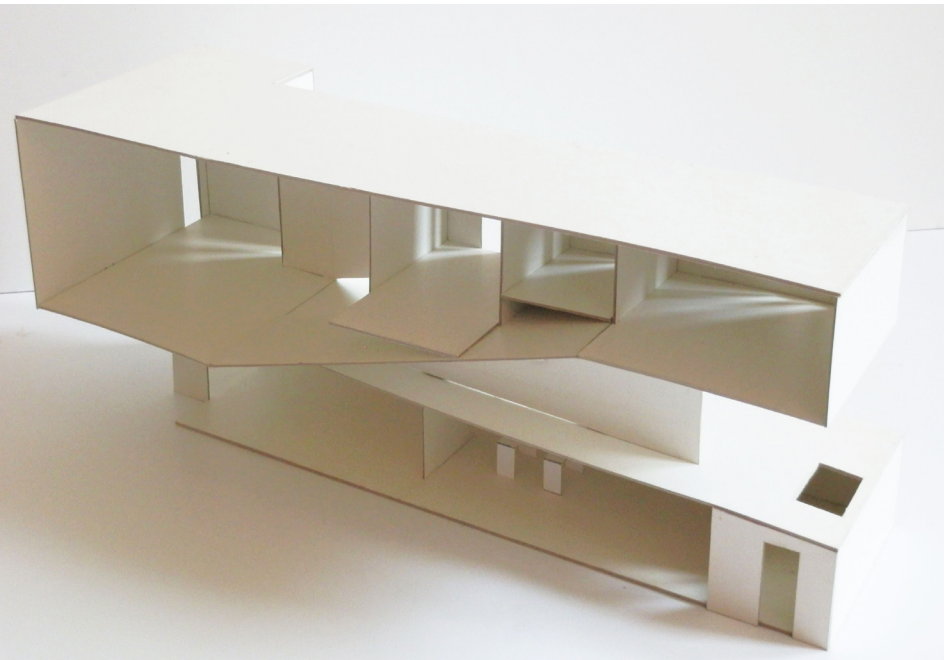
Musician's Residence



Mezzanine Green Space

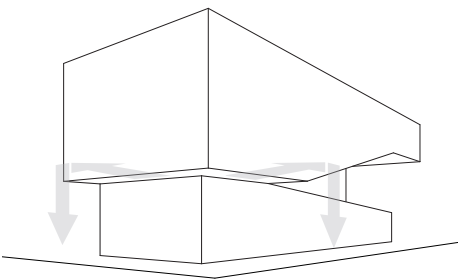


Multifunctional Test Kitchen



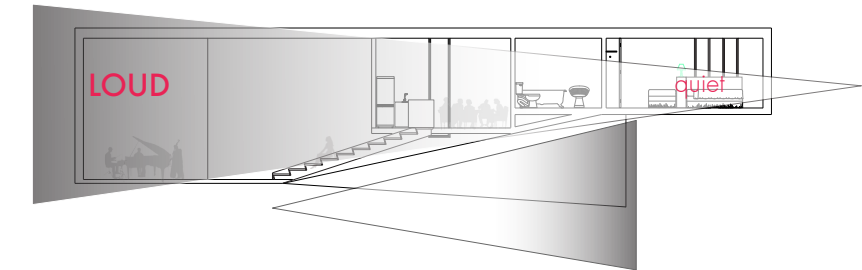
Green Space

Access to green space in vertical living was executed by carving out a portion of the upper level, creating a mezzanine level for all to enjoy

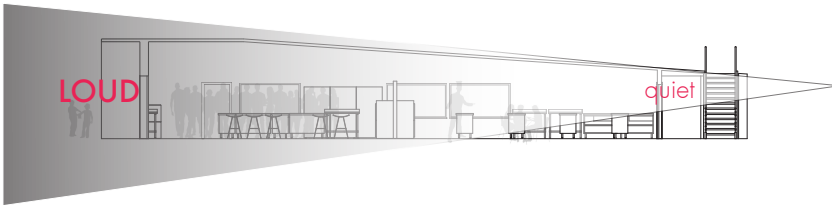


Site Considerate

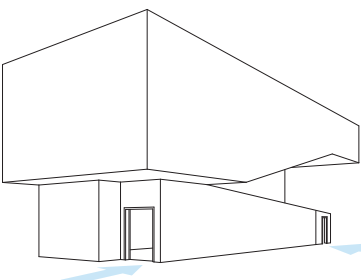
By cantilevering the domestic space above, not only are we able to create more living space, but also generate an awning for the sidewalk below



Jam Space Seating/ Stairwell Kitchen Bathroom Bedroom

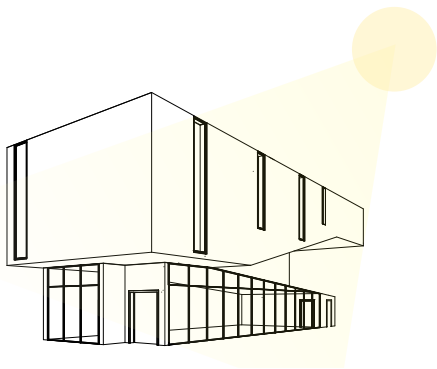


Street Storefront Public Test Kitchen Professional Test Kitchen Residential Access



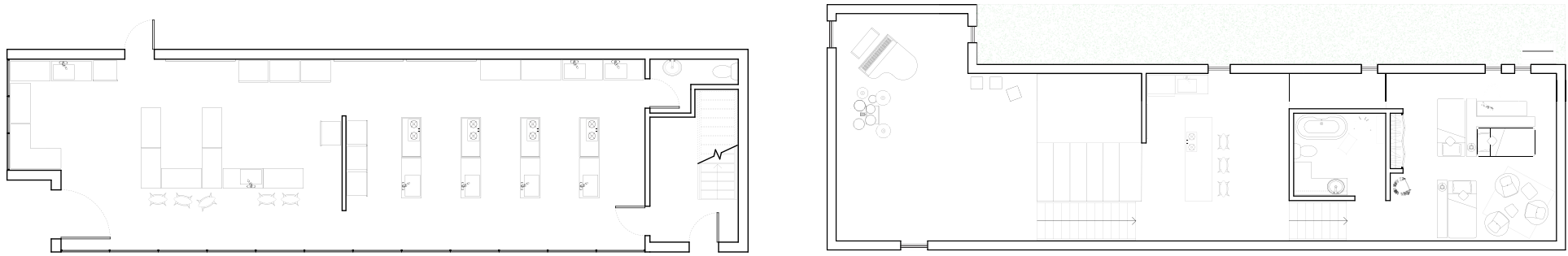
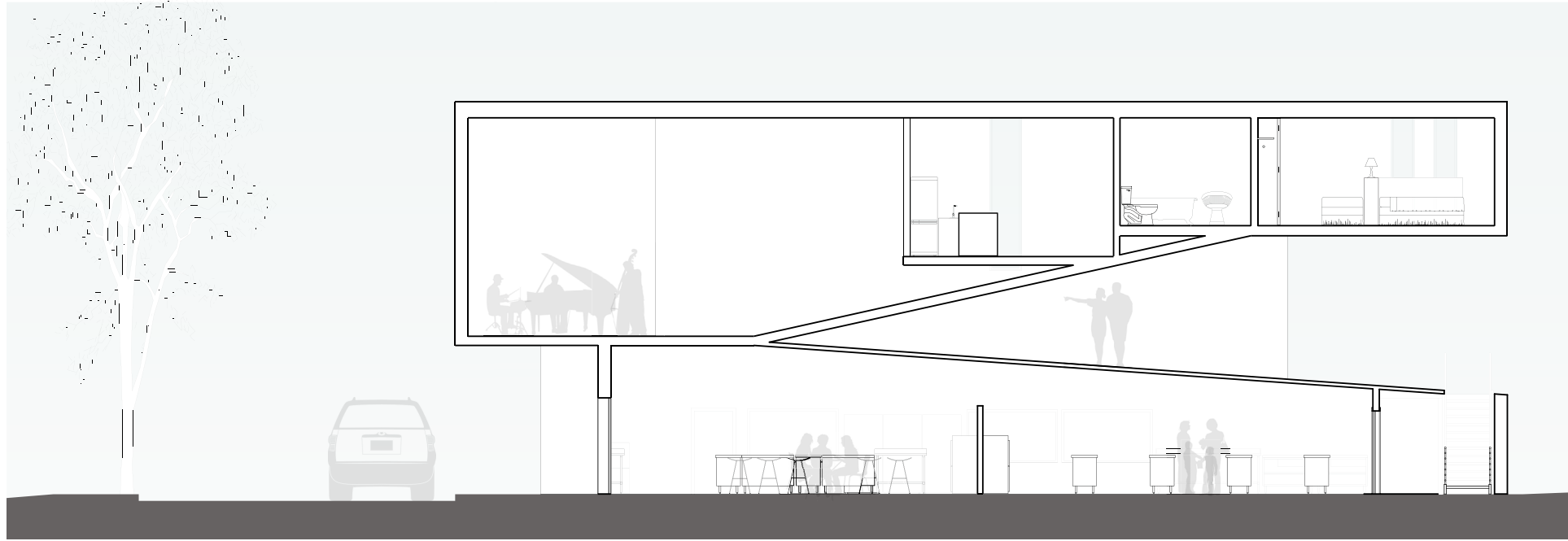
Public and Private Entries

With the 2 different building programs, a public test kitchen entry is located on the busier Ontario St., while a residential one is located on E.5th



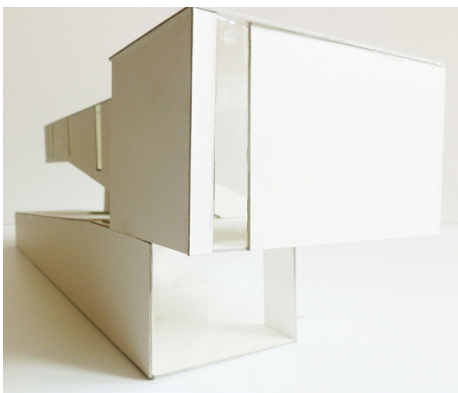
Energy Efficiency

To create a more energy efficient building, the locations of windows and doors have been analyzed, so as to capitalize on solar power



Building Plans and Section

Both kitchens and spaces occupied by musicians generate a multitude of sounds. Thus, the building's form is derived from noise cones, illustrating the spectrum of sound (previous page). The organization of building programs too follows this methodology, as demonstrated in the floor plans (above).



Massing Model

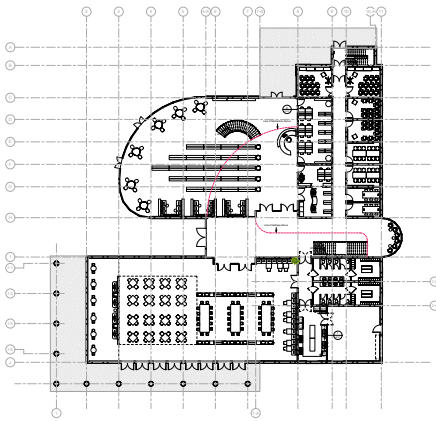
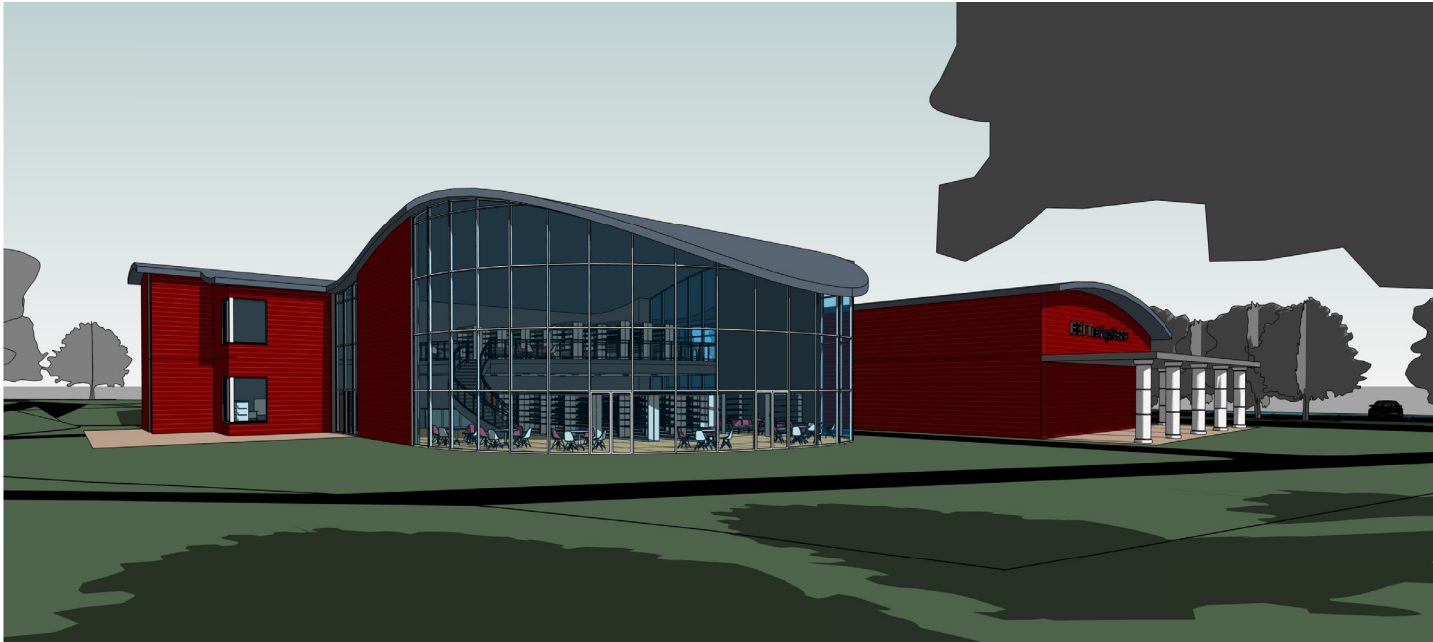
The building's massing model depicts the spatial divisions and connections within each program, while translating design concepts from 2D to 3D.

BCIT Centre

EDUCATION FACILITY DESIGN HIGHLIGHTING FLEXIBLE LEARNING

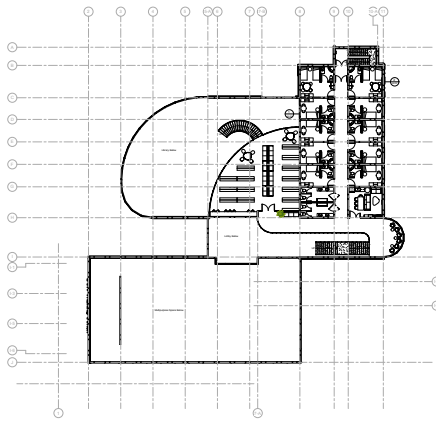
BCIT Training Centre is envisioned as a multi-purpose academic complex that houses classrooms, interactive learning spaces, student residences, communal spaces, and two grand libraries that are accessible to both students and the public. To reflect the flexible nature of the School’s education experience, as well as its deep-rooted connection to the greater community the building looks to a sinous, undulating roof system, which envelops and harmonizes the various different programs that the building houses. Further, the palette of curtain wall system and brick finish indicates to users which areas of the building are accessible to whom.

Autodesk Revit for Architecture
January - April 2017
Instructor G. Batula



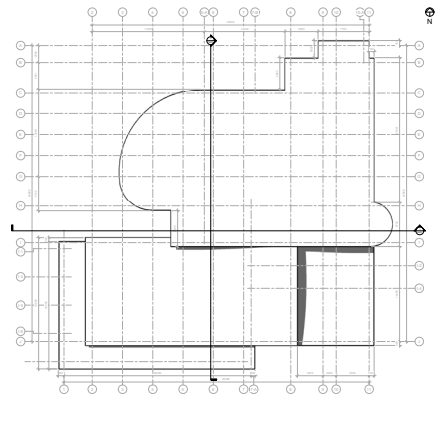
Ground Floor Plan

The main floor is home to various learning techniques and formats that the School is known for, with the library as the heart of the community



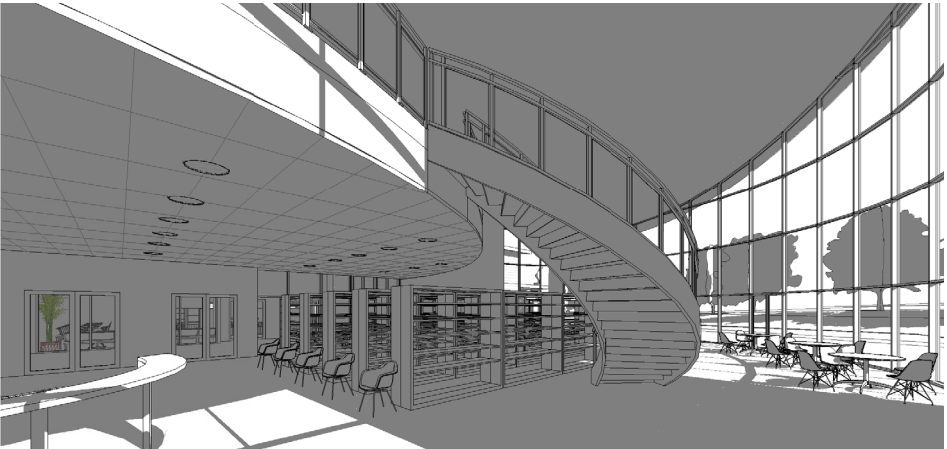
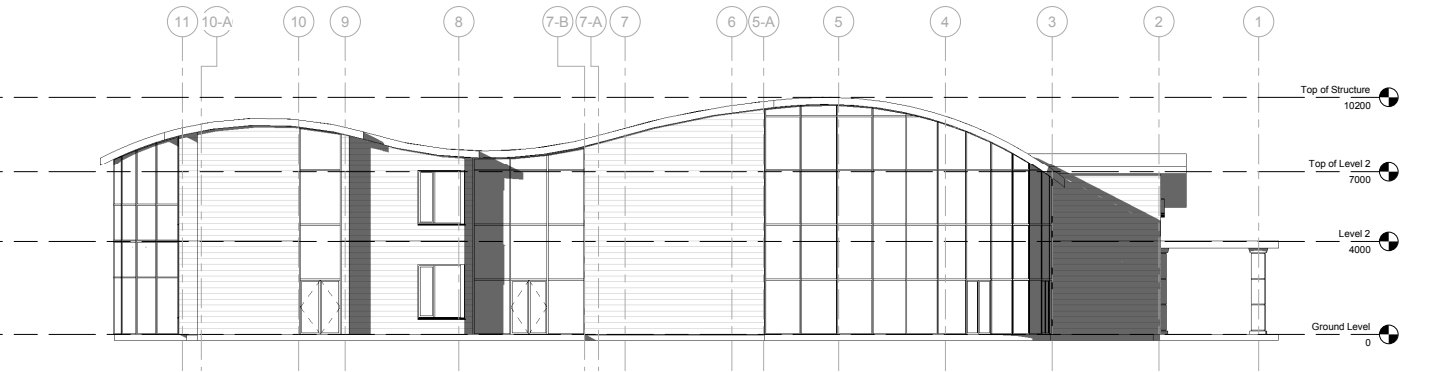
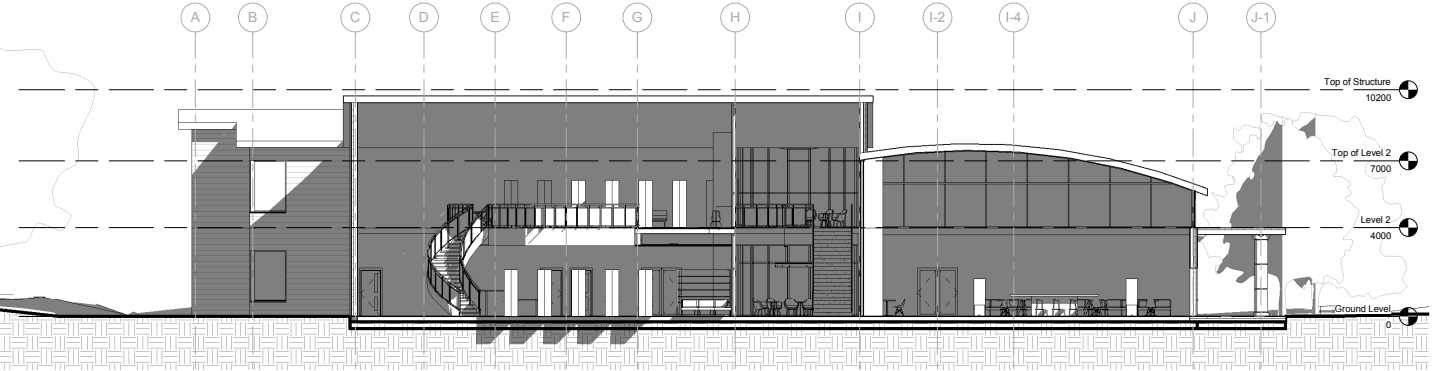
Second Floor Plan

The floor above is strictly for students and faculty, providing them with a relaxing atmosphere that emphasizes on balance between school and life



Roof Plan

Though not apparent in plan, a sinous roof system serves as the tie that binds and harmonizes all of the building programs together



Building Development

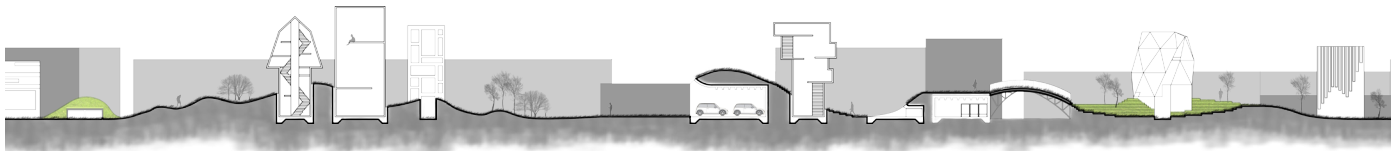
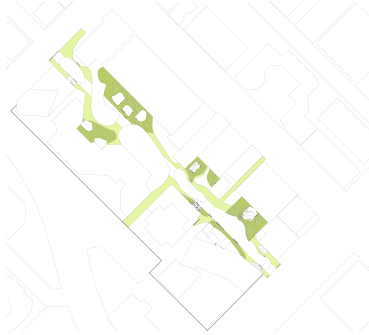
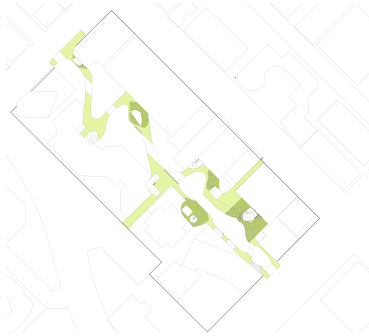
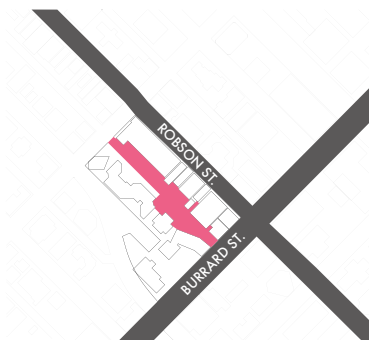
The design of the building focuses on providing a versatile learning environment, while serving as a public space for the community. As such, the training center’s ground floor is programmed with airy, open spaces, with floor to ceiling glass in areas that are accessible to all (left; bottom). This can also be seen in one of the building section (left; top) and elevation (left; 2nd row). The sinuous, undulating nature of the roof systems (above) stands as the binding agent that balances and unites the programs together.

Macrodumping

SENSORIAL DINING EXPERIENCE IN STEAM + WATER

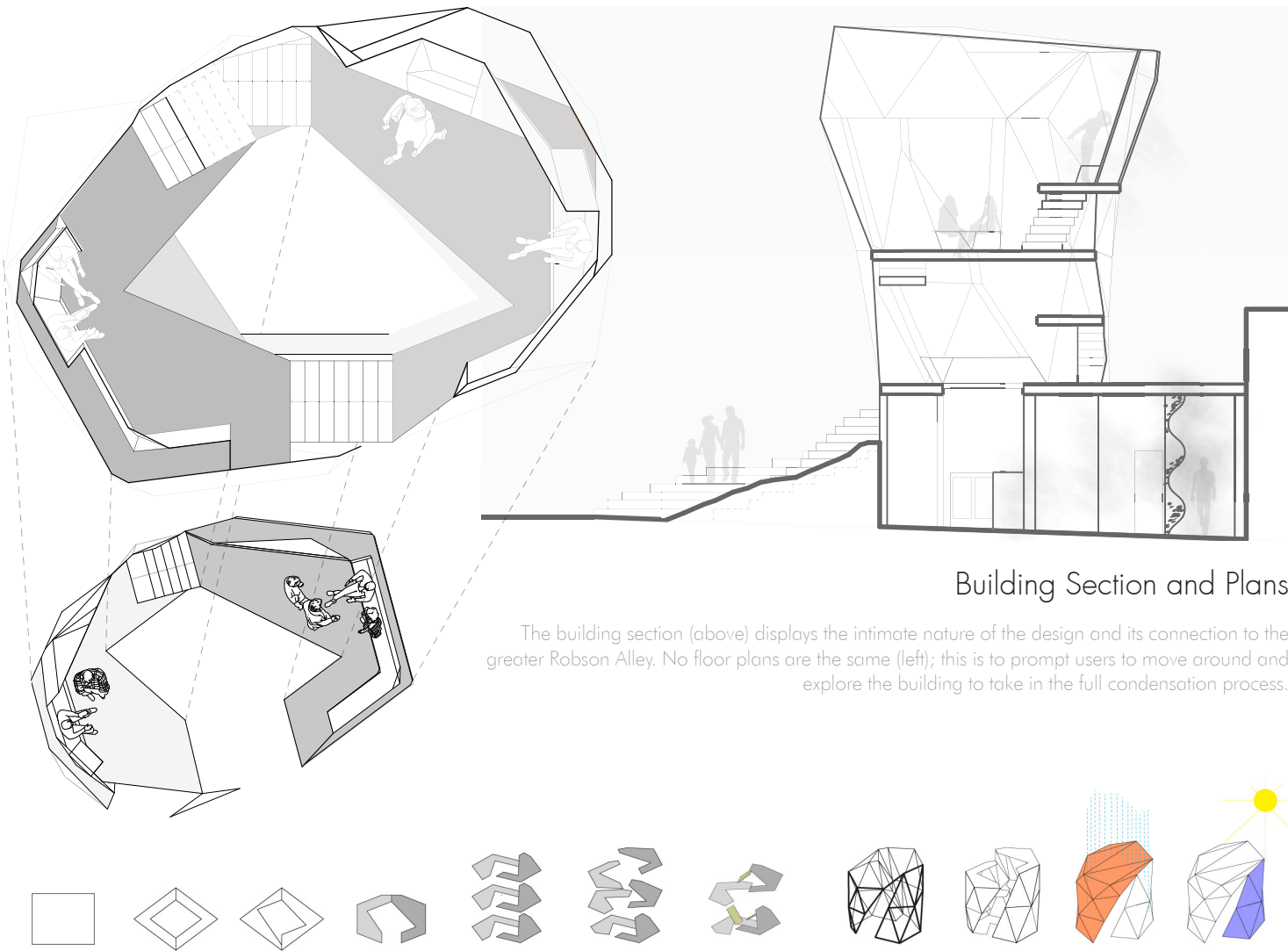
Amidst the throng of high-end commercialism and cutthroat capitalism that dominate Downtown Vancouver, in an alleyway just off of Robson and Burrard, one will stumble upon **Macrodumping**. Centered around a steamed dumpling and tea restaurant, the project allows users to experience a joint process that occurs in the making of both food items: condensation. This natural phenomenon becomes the featured attraction of the building, which seeks to tap into the five senses of visitors and customers alike, familiarizing them with the sensorial nature and quality of steam and water.

Environmental Design Studio IV
January - April 2015
Professor B. Pechet



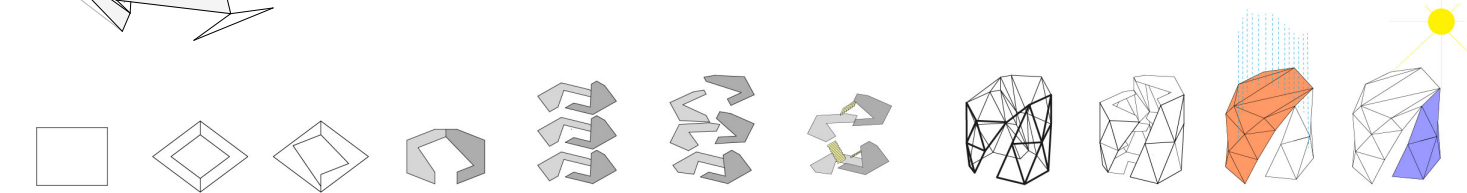
Model Experimentations

The condensation envelops diners as they are seated within glass-clad pockets, creating an intimate dining experience from public to private.



Building Section and Plans

The building section (above) displays the intimate nature of the design and its connection to the greater Robson Alley. No floor plans are the same (left); this is to prompt users to move around and explore the building to take in the full condensation process.



Form Development

Twisting octagonal floorplates emulate one of the last steps in making dumplings: twisting the dough to secure the stuffing inside. Meanwhile, floor-to-ceiling glass wall seatings envelop and encourage users to use their five senses to experience the sensational nature of condensation.

Appendix

¹Harwood Manor

As Project Coordinator and Technologist at BC Building Science Ltd. (BCBS), I was assigned to create the comprehensive construction and drawing package for 1133 Harwood St for permit and construction. A major proponent of my role is to revise and construct building envelope details based on BCBS templates and onsite photographs. In addition, Principal Andrew Creighton tasked me to create the building's 3D model and come up with various preliminary color schemes as a part of the proposed scope of work outlined in our contract with strata. The project is currently at the stage of permit application. All drawings, images, color schemes belong to BC Building Science Ltd. (2017)

²Macrodumping

Collaborating with Darcy Keester on this project, my role began with creating various schematic and programming diagrams, based on notes and ideas presented during our brainstorming and desk crit sessions. Once the building form was determined, we divided up tasks. I was in charge of creating the plans, sections, elevations, and site analysis of the project. Together, we experimented with steam using concept models that we both produced, while contributing to the development of renderings in Rhino 3D, Keyshot, and Photoshop.

Thank you for your considerations

