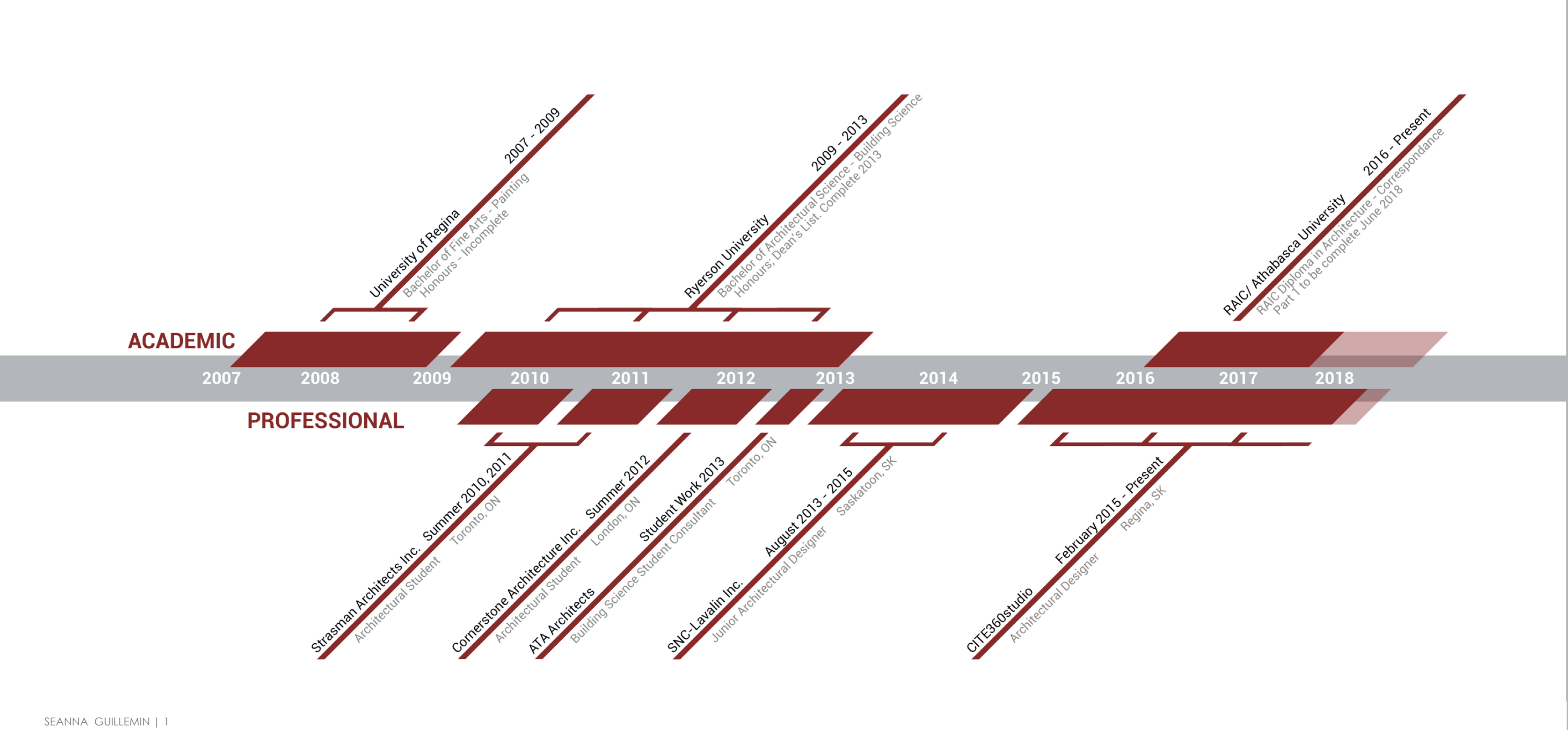


Photography from KULTOUR 2012

Seanna Guillemín

Architectural Portfolio 2009 - 2017

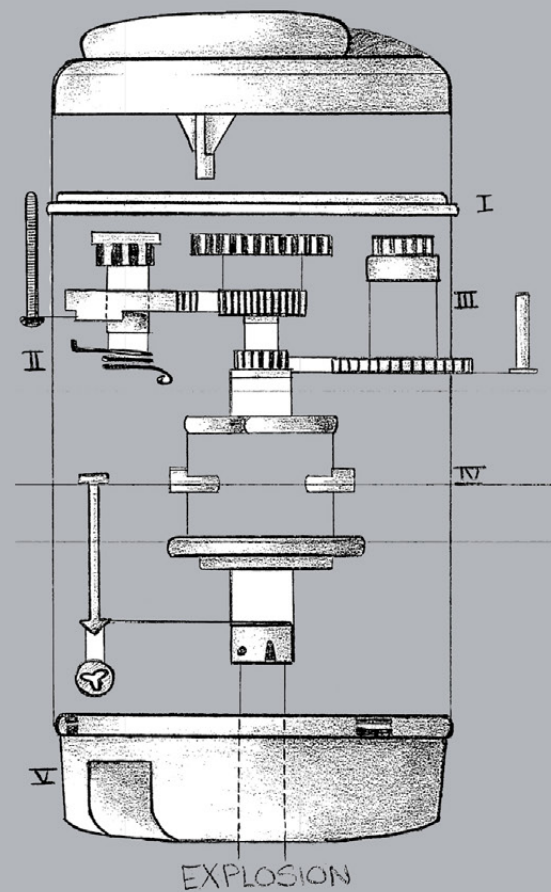


WORKS

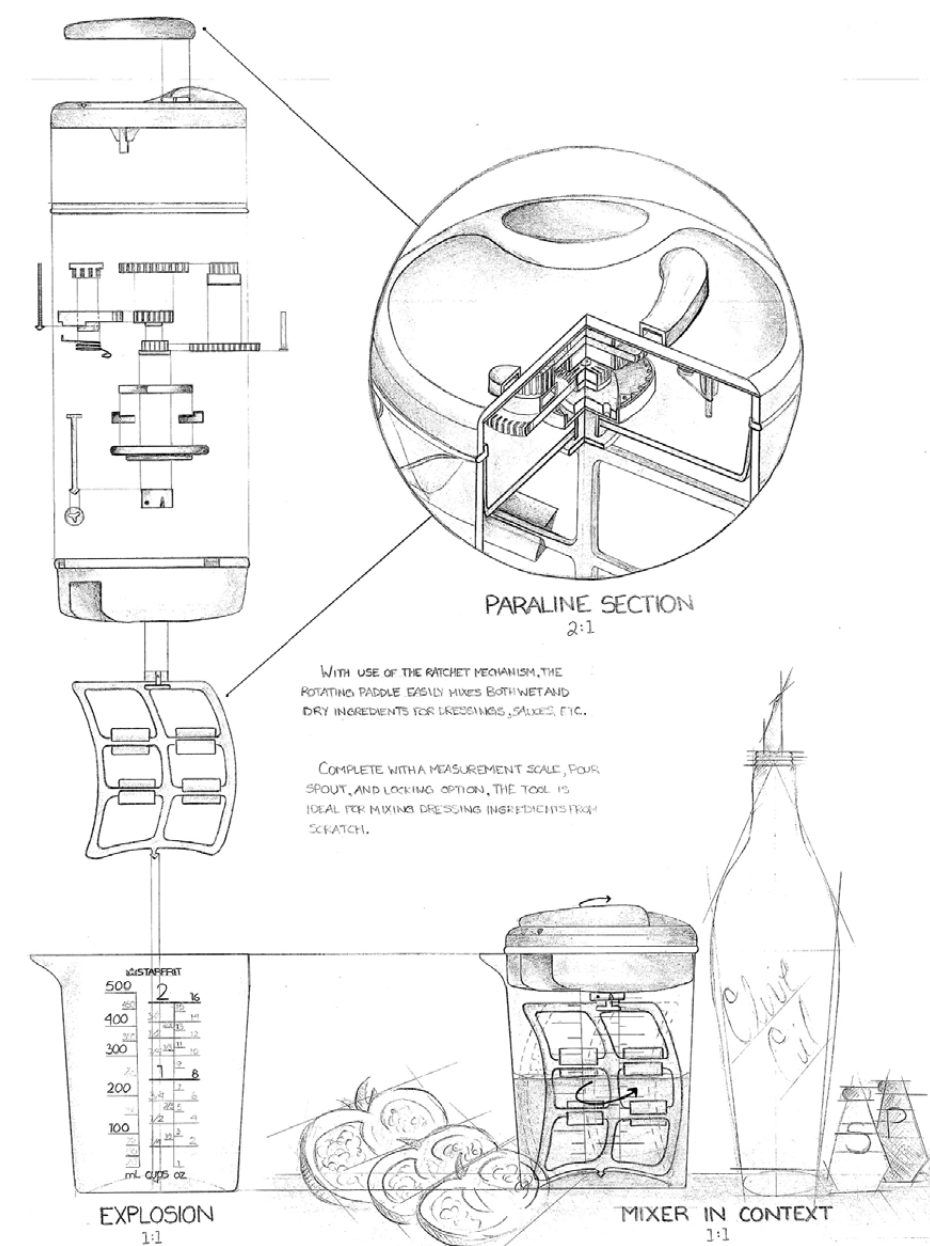
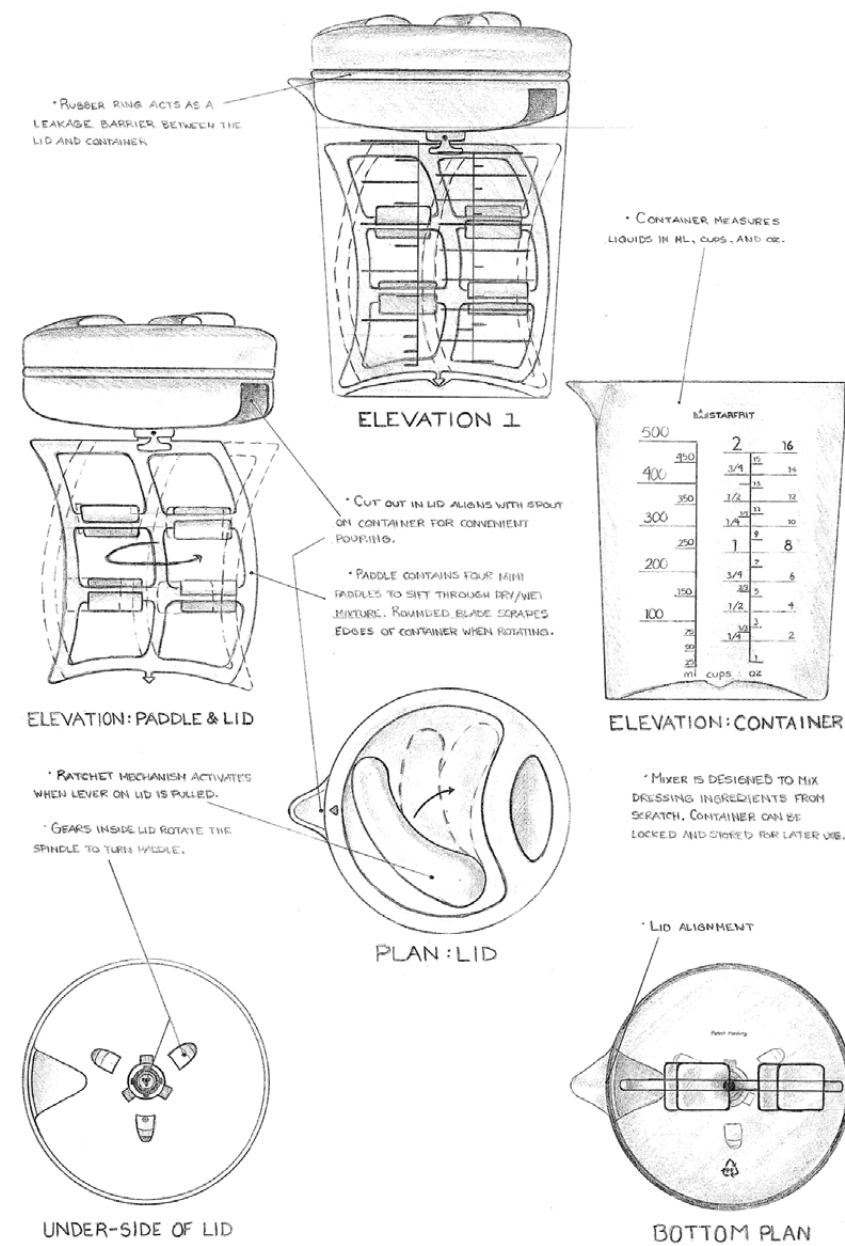
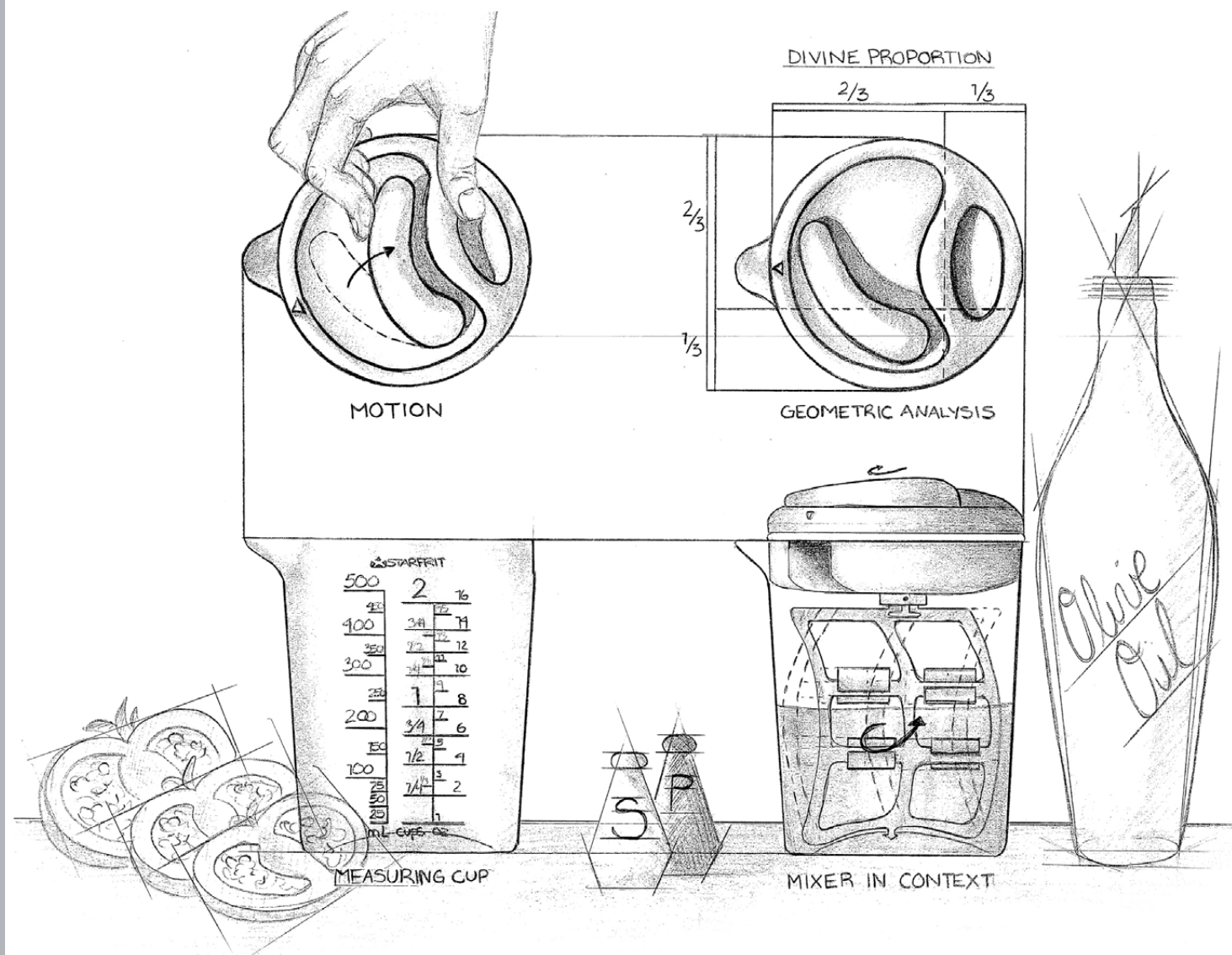
- 01 KITCHEN TOOL CHALLENGE**
Ryerson University - 2009
- 02 GEOMETER'S STUDIO**
Ryerson University - 2011
- 03 FIELD SKETCHES ABROAD**
Ryerson University - 2012
- 04 MEDIA EXPLORATION**
Ryerson University - 2012
- 05 BUILDING INVESTIGATION & RETROFIT**
Ryerson University - 2012
- 06 CAMP SLEEPING MODULE**
RAIC Syllabus - 2017
- 07 THE LARSON HOUSE**
RAIC Syllabus - 2017
- 08 ECOLE CONNAUGHT - NEW BUILD**
CITE360studio - 2015 to 2017
- 09 PUBLICATIONS & AWARDS**
2009 to 2017

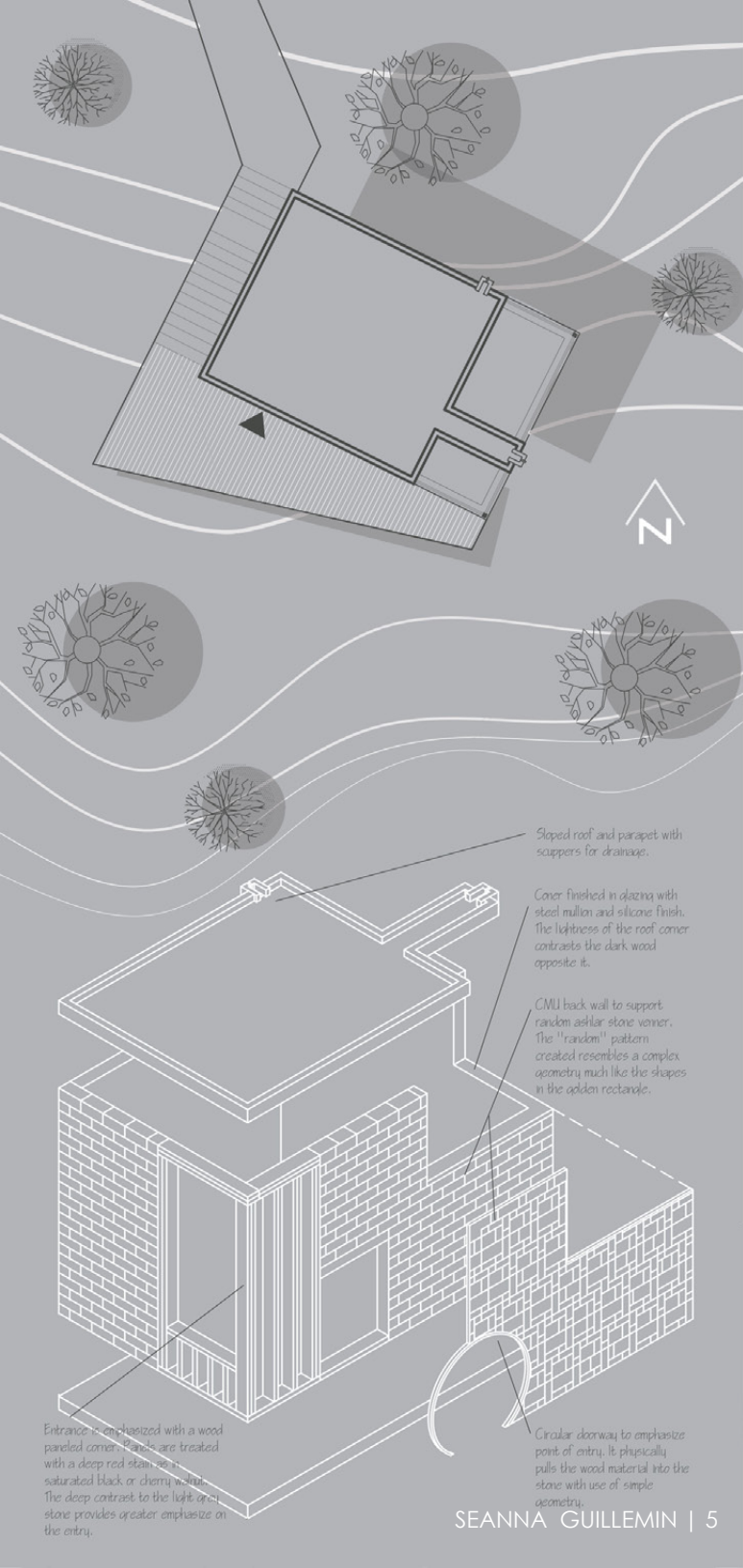
01 KITCHEN TOOL CHALLENGE

ASC 101: Communications Studio
Ryerson University, 2009
Professor: Margery Winkler



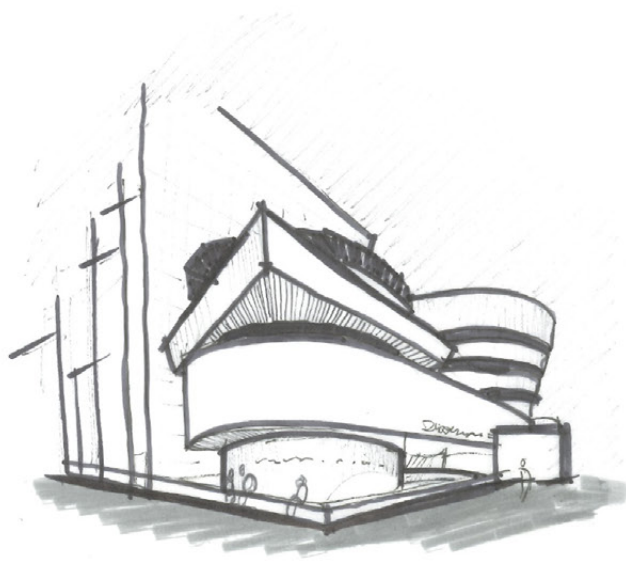
The "Kitchen Tool" Challenge aimed to teach first year students the many ways of graphically executing traditional architectural drawings. Using a gadget of our choice, we were instructed to explain the intricacies and details of the product using conventional hand sketches.





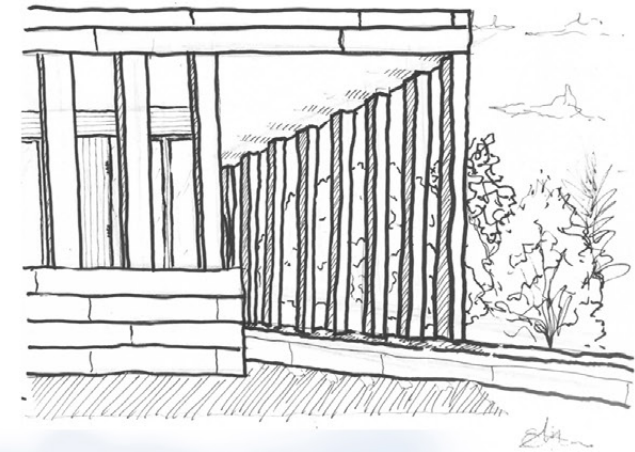
03 FIELD SKETCHES

Study Abroad & Personal Travel
Travel dates from 2012 - 2013

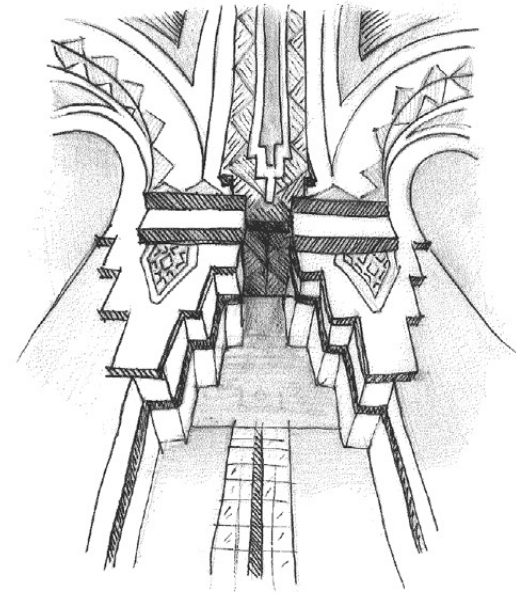


AUSTRIA | GERMANY | SWITZERLAND

Course - ASC 704: Independent Study; KULTOUR
Ryerson University, 2012. Study Abroad
Professor: Y.T Leong & L. Gies

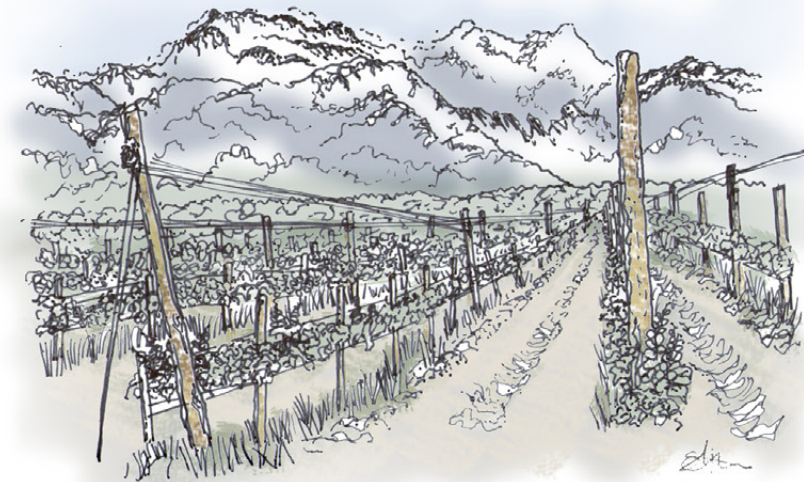


Site sketches are a diary of the mind. The first things to study are form and relationships, these should be the foundation of each entry. The rest should emphasize the heart of the character, be it in geometry, detail, or a particular emotion.



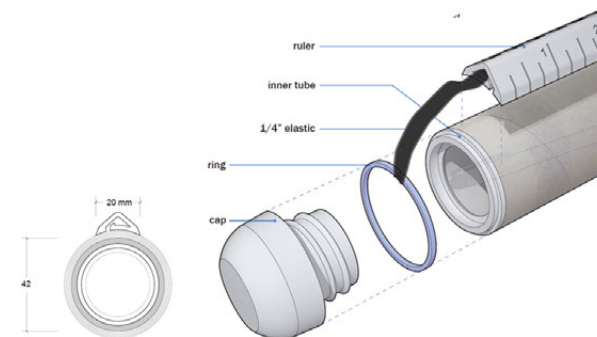
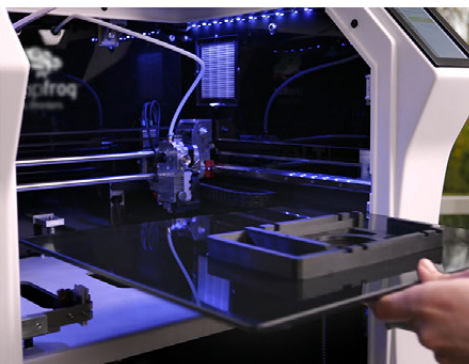
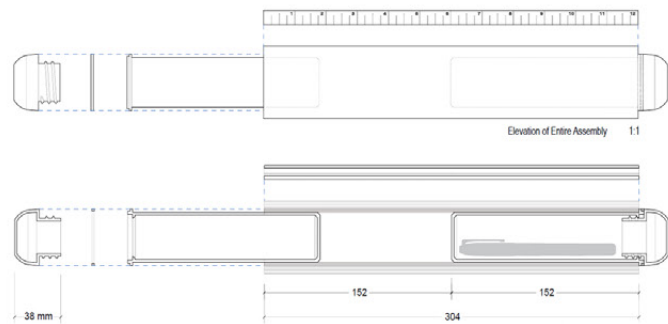
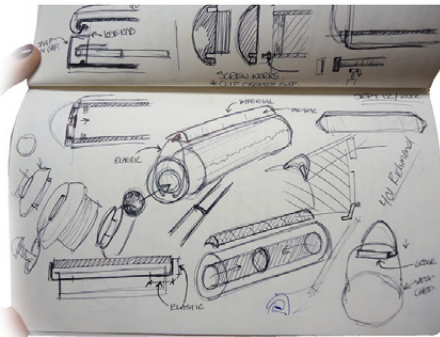
NEW YORK | CHICAGO | DETROIT

Course - Student-Guided Tour
Ryerson University, 2013
Personal Study



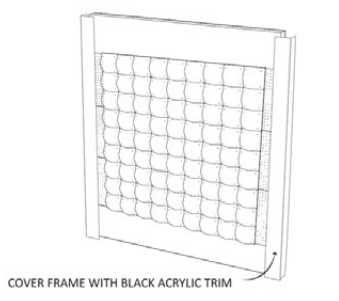
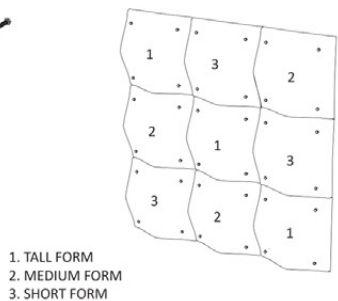
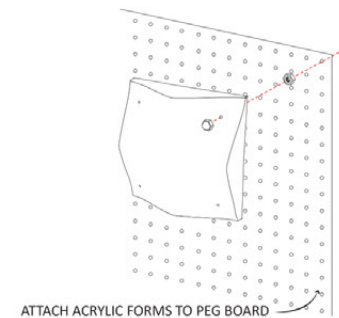
04 MEDIA EXPLORATION

ASC 755: Digital Tools
Ryerson University, 2012
Professor: Vincent Hui



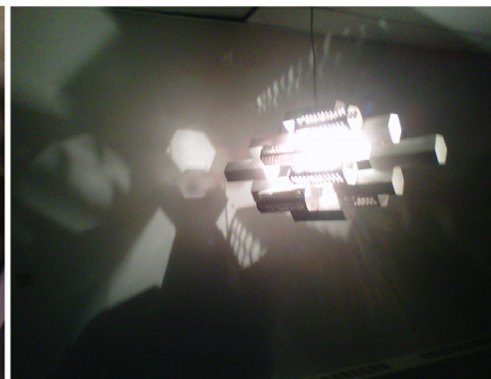
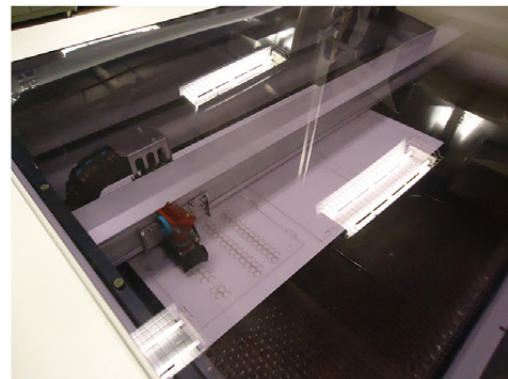
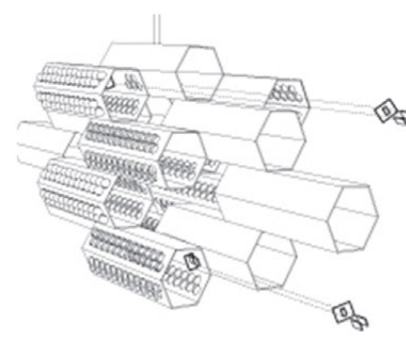
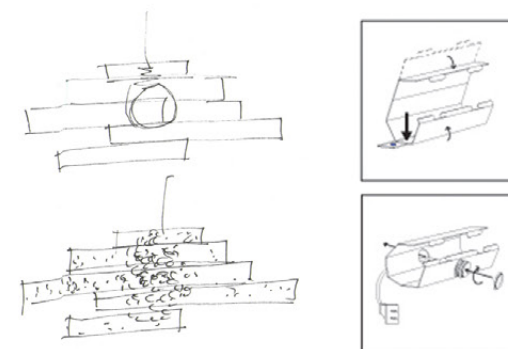
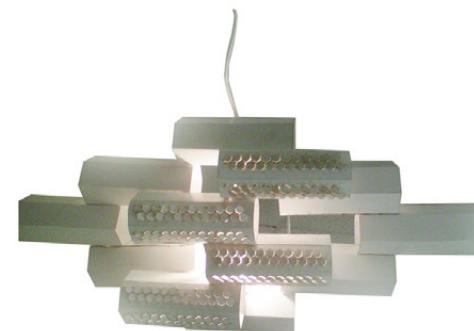
3D PRINTING & STOP MOTION

The "TraceCase" was designed to store and transport the architects most prized tools; trace paper, a scale, and pens. The 3D printed design mounts inside any roll of trace paper and provides unique compact storage taking imagination anywhere.



VACUFORM & ARDUINO CODING

"Arduino Echo" was a light installation and study on vocal mapping. Located in the University hallway, the light would respond to and follow any nearby sounds. It would follow any passer-by's footsteps, and would flicker to any nearby conversation.

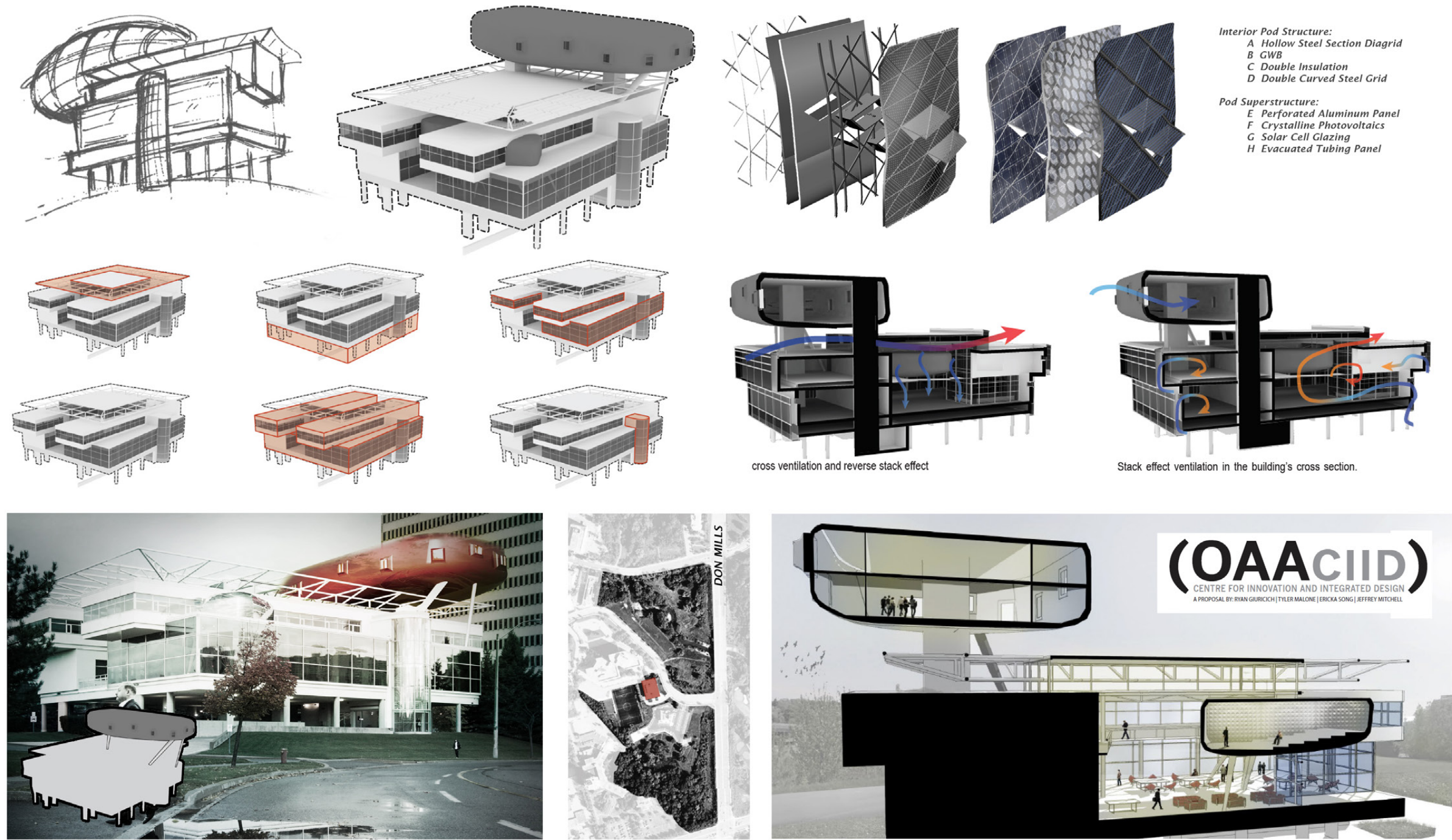


LASER PRINTING

The "Cloud Comb" project focused on rapid prototyping of a quick install kit that could be shipped to any home. The design explored playful applications of light and shadow that could be customized and altered by the consumer.

05 BUILDING INVESTIGATION & RETROFIT

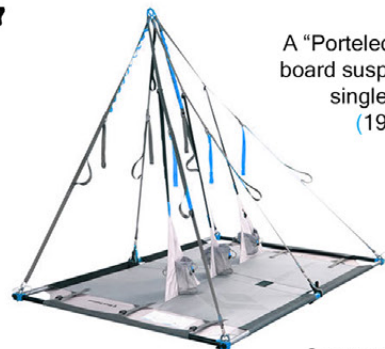
BSC 720: Building Science Studio I
Ryerson University, 2012
Professor: Vera Straka



06 CAMP SLEEPING MODULE

RAIC Syllabus: D2/D3 Split Studio
Regina Sector, 2017
Architect Mentor: Nathan Orban, LeeAnn Croft

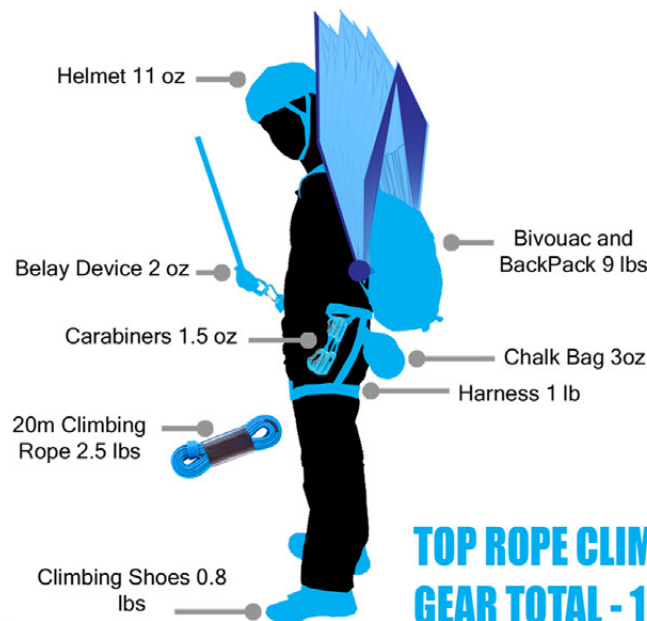
TRADITIONAL CLIMBING SHELTERS



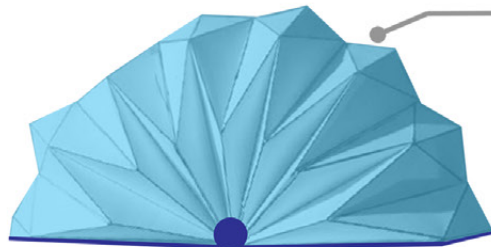
A "Portledge" is a hard board suspended from a single anchor.
(19+ lbs)



Common Bivouac or "Bivvy" used to curl up in a cliff crevice.
(0.7 lbs)



TOP ROPE CLIMBING GEAR TOTAL - 15lbs

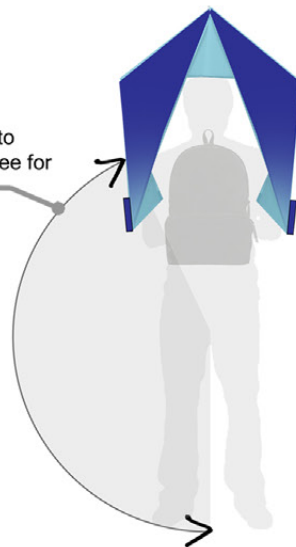


Traditional climbing materials are used to create the Bivouac Cocoon. A lightweight but strong metal frame is encapsulated by a light waterproof membrane. The inside is lined with soft fabrics to ensure warmth and comfort.

Aluminum cap covering rotation mechanism. Cocoon lockable to extent required.



Cocoon is secured on the back to ensure arm and leg range are free for movement while climbing.



AVERAGE 10 YR OLD



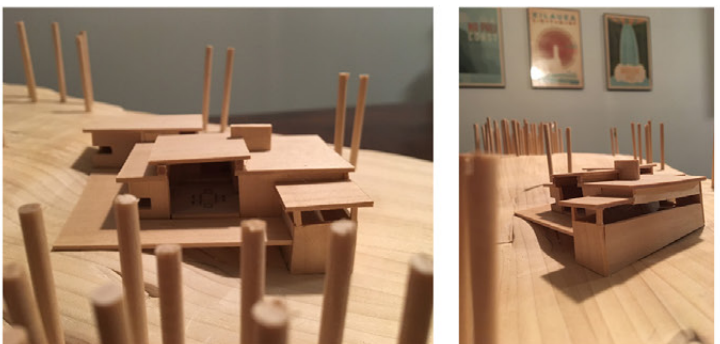
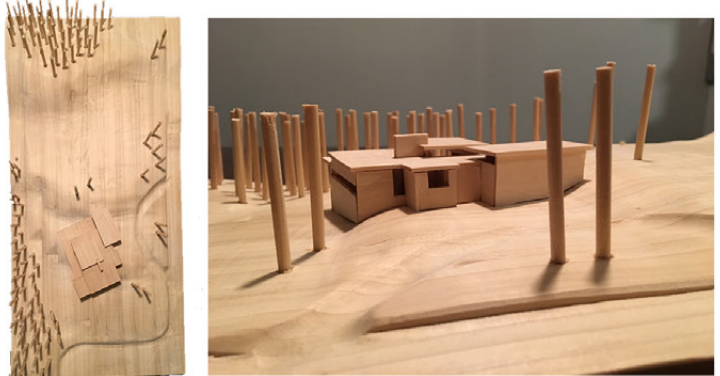
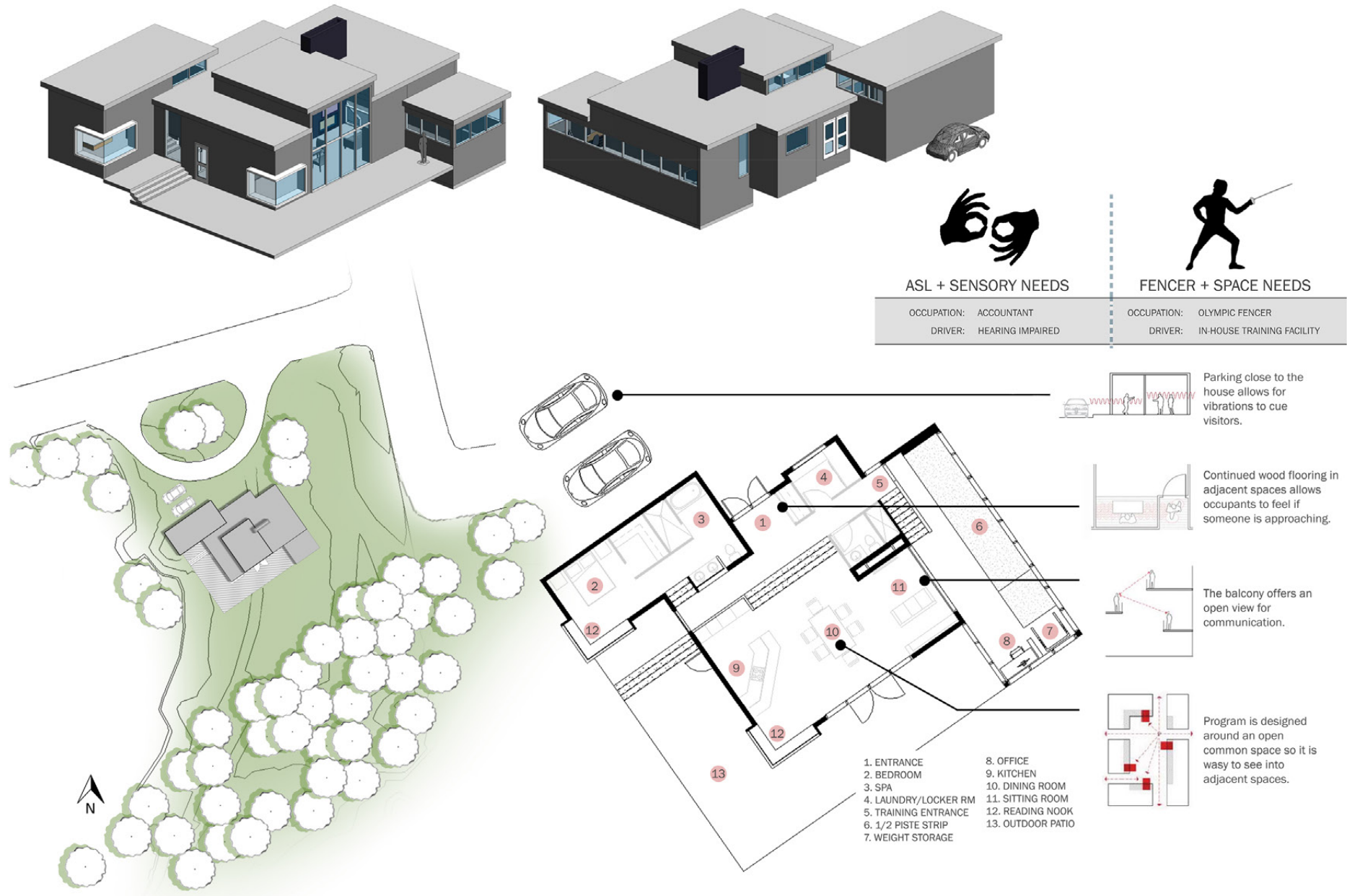
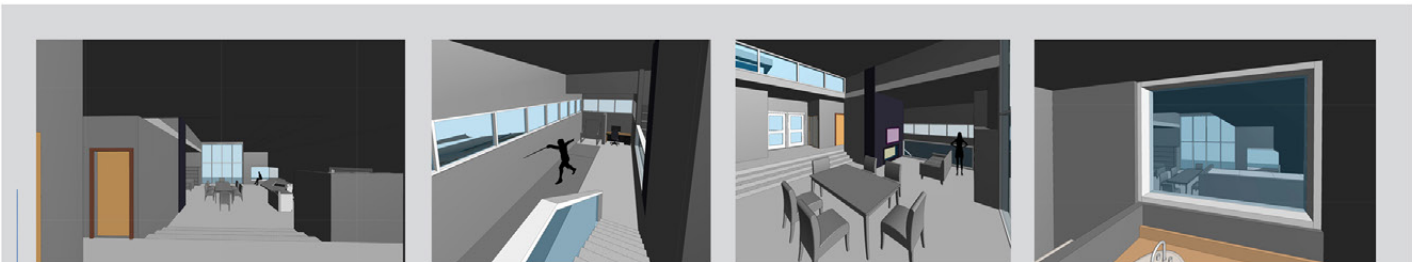
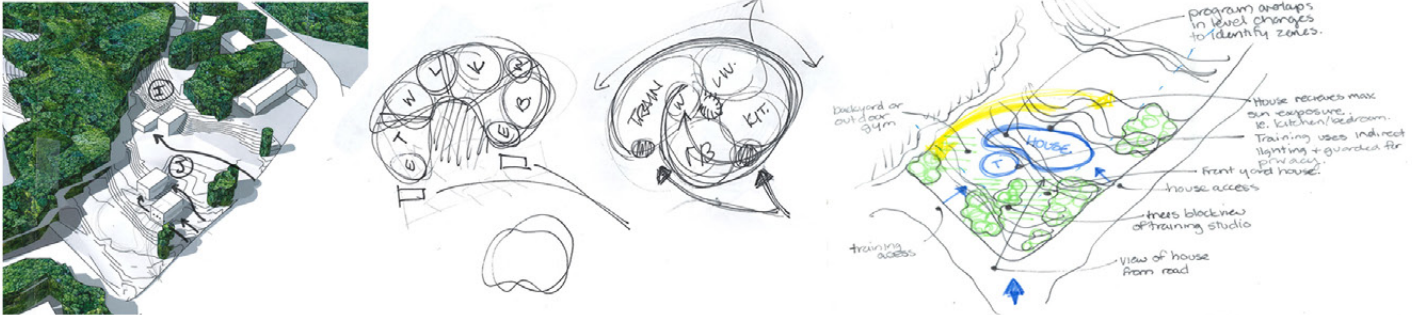
*Statistics from World Health Organization 2012

The Bivouac "Cocoon" is a unique sleeping experience that allows climbers to securely anchor in for the night in a cozy private chamber while protecting themselves from the surrounding elements. Campers will get to practise the art of bivouacking in a safe and secure environment.



07 THE LARSON HOUSE

RAIC Syllabus: D2/D3 Split Studio
Regina Sector, 2017
Architect Mentor: Nathan Orban, LeeAnn Croft



The "Larson House" was designed as a place of residence for 2 occupants: an Olympic fencer and a woman who is profoundly deaf. The design decisions for the site and program were focused on the occupant's individual and combined needs. DeafSpace design principles were a particular driver as they dictated the flow and visibility within the space in order to maintain sensory awareness for both safety and communication.



*Render completed by a designer from Number TEN in Winnipeg, MB.



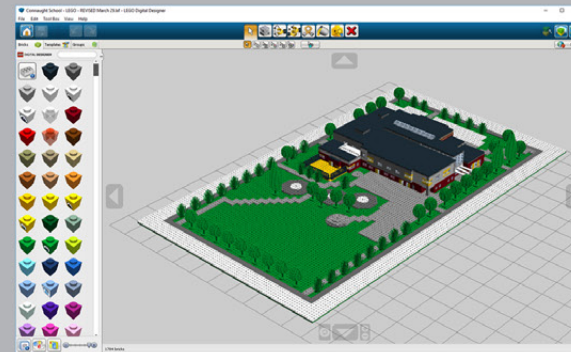
North Elevation

*Ecole Connaught was drawn and rendered using Revit collaborative across 3 design companies.



East Elevation

Designed and built a LEGO Model!

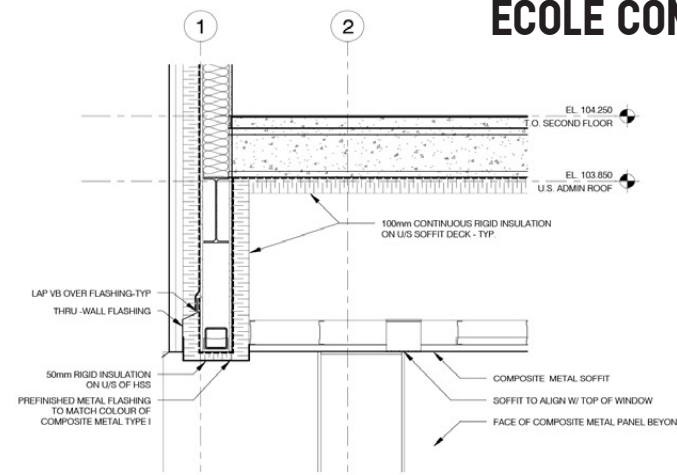


In an act to engage the community and new students of Ecole Connaught Community School, I had the opportunity to design and construct a LEGO "kit" that would be built by the students. The kit was designed using a Digital Designer program and allowed the students to get excited about attending their new school.

ECOLE CONNAUGHT COMMUNITY SCHOOL

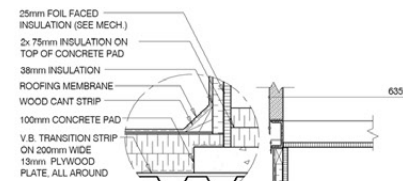
Designer, Technologist (Revit), Contract Admin
CITE360studio Regina, SK
Project completion 2015 - 2017

08



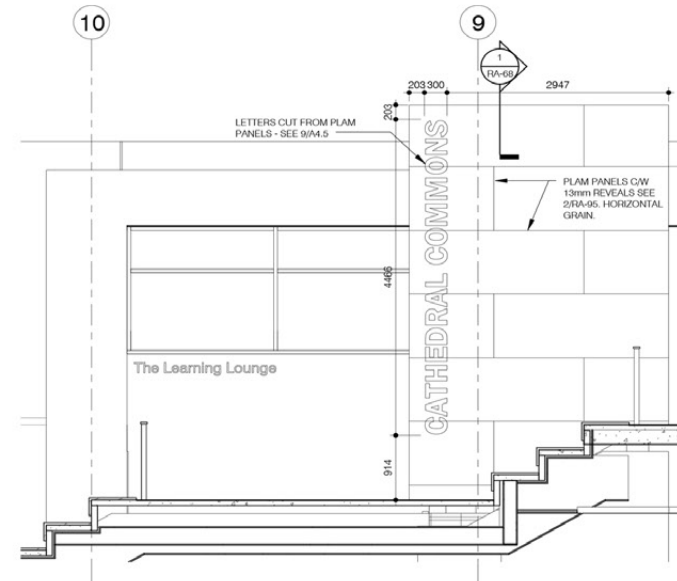
1 SOFFIT DETAIL @ EL101 ENTRANCE

RA-78 SCALE 1 : 20



1 ROOF DETAIL AT HRV-2

RA-38 SCALE 1 : 20



1 Room 118 - SOUTH ELEVATOR WALL LETTERING

RA-95 SCALE 1 : 50



09 AWARDS & PUBLICATIONS

Complete/Awarded between 2009 - 2017



2010

CISC Design Award

Canadian Institute of Steel Construction Ontario Regional Scholarship; Awarded January 2010

The scholarship is awarded to students who have demonstrated outstanding work in the area of Steel Design. The 2010 award was presented to the Ryerson University collaborative design team.



2011

Urban Scale Design

Urban Scale Design is an annual publication at Ryerson University showcasing a compilation of illustrated essays centered around urban design.

My contribution to the 2011 publication was an essay titled "Patrick Geddes: Modernism and the White City." All works are assessed and selected from students in PLX599: The Human World.



2011 - 2012

325 Magazine - Feature

325 Magazine is an annual publication at Ryerson University featuring a selection of undergraduate works, awards, community service, and noteworthy interviews.

Photography - p 2.8: Images taken on the KULTOUR Study Abroad trip to Germany, Switzerland, and Austria

Community Service - p 3.7: Feature article on the community work done by Freedom by Design, a non-profit student-run organization facilitated by the American Institute of Architectural Students.



2012

LEED Green Associate

Canada Green Building Council. Accreditation awarded through Green Business Certification Inc. (GBCI) in 2012

LEED Certification is a standard applied to buildings in order to lead and accelerate the transformation to high-performing, healthy, sustainable buildings. Professional accreditation is awarded after completion of the respective category exam and maintained under collection of continuing education.



2012

Canadian Acoustics

Canadian Acoustics Journal: Research completed for future publication. 2012

Assistant research under the guidance of Canadian Acoustics Journal editor and acoustician, Ramani Ramakrishnan. Research focused on acoustic testing methods for various worship spaces. Research teams are selected by the lead professors based on academic interest and academic standing.



2017

IDAS People's Choice

Interior Design Association of Saskatchewan (IDAS) People's Choice; Awarded May 2017

IDAS and Sask Fashion Week collaborate every year to launch the SFWxIDAS Design Competition showcasing the work of 15 local designers. Teams will create unique seating areas each distinct in their own vision. The award is presented to the team most voted for excellence by SFW attendees.